



SWAN Library Services

SWAN BOARD COMMITTEE MEETING OF THE WHOLE
RAILS Burr Ridge
125 Tower Drive, Burr Ridge IL 60527

AGENDA

February 6, 2018 - Time 9:30 a.m.

1. Call to Order (Rich Wolff, Tinley Park)
 2. Introduction of Visitors (Rich Wolff, Tinley Park)
 3. Overview and Discussion of FY19 Budget Draft (Aaron Skog)
 4. Overview on SWAN eRead Illinois Participation and Requirements for Consortia Discount (Aaron Skog)
 5. Next Steps – SWAN Board President (Rich Wolff, Tinley Park)
 6. Next Membership Meeting: SWAN Quarterly March 1, 2018
 7. Adjourn
- (Member Comment after each agenda item)

The Meeting will be broadcast live at the website

<https://attendee.gototraining.com/r/7139827577382042370>

Please note, this live stream will be of the presentation, not the audience. Chat will allow questions as meeting permits.

SWAN Services

800 Quail Ridge Drive
Westmont, IL 60559
Phone: 844-SWAN-LIB

INFORMATION AND GUIDELINES
Fiscal Year 2019
SWAN Budget Draft
February 6, 2018 Committee of the Whole Meeting

Introduction

The SWAN fiscal year 2019 (July 1, 2018 – June 30, 2019) budget will be approved at the March 1, 2018 SWAN Quarterly meeting. This is a budget based on:

- Final FY17 audit
- A one-year RAILS-SWAN FY19 contract
- Zero-based budget
- Addition of 19 libraries joining SWAN
- Additional positions to support 97 libraries
- Addition of Green Hills Public Library District

This document is an overview of the FY19 budget for the SWAN Board and Membership.

RAILS-SWAN Agreement

The SWAN FY19 budget includes revenue based on a one-year agreement with RAILS. For the FY19 SWAN budget, revenue line #4090 Other Revenue is increasing from FY18.

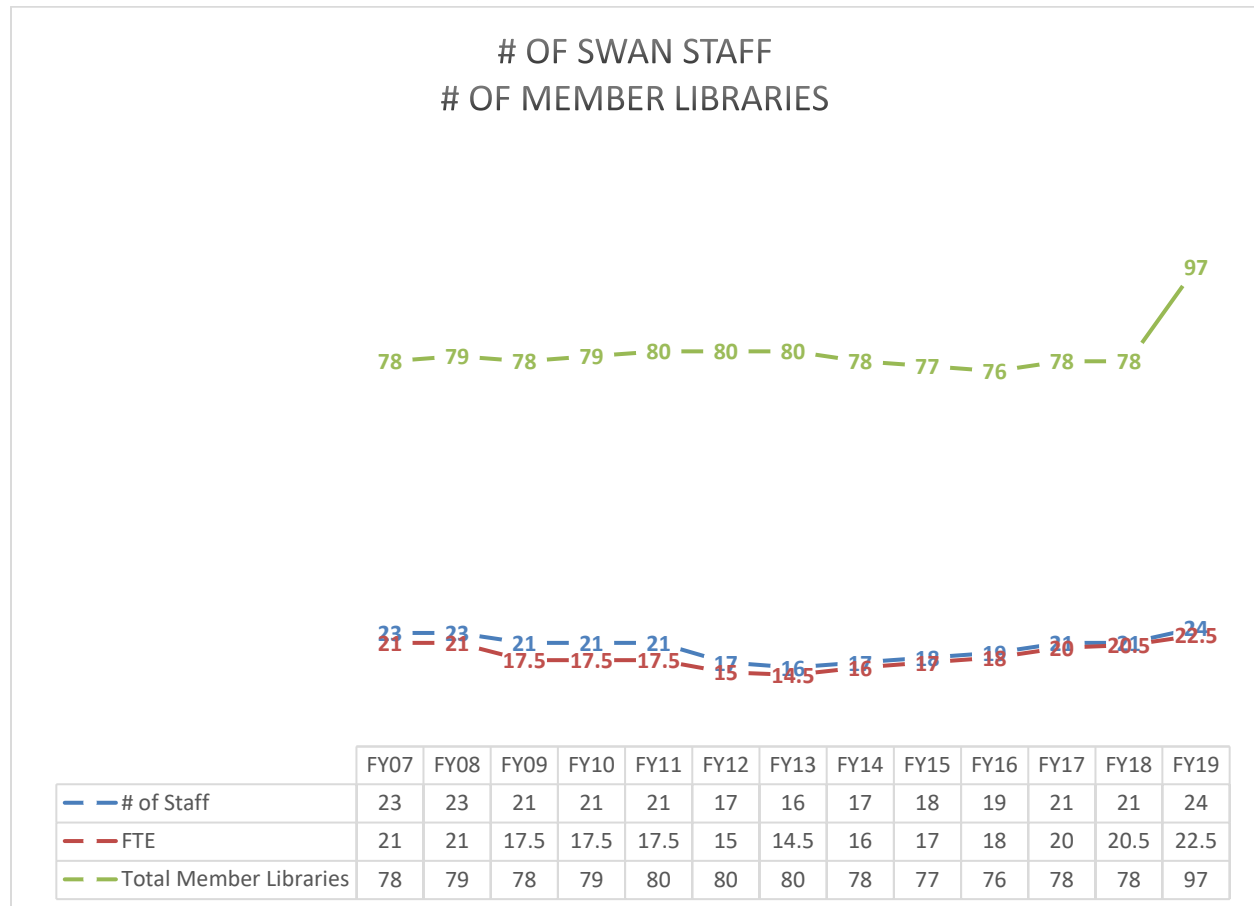
	FY17	Revised FY17	FY18	FY19
RAILS support	565,927	565,927	572,581	664,167
SWAN rent charged by RAILS for use of 125 Burr Ridge	(113,527)	(19,052)	(0)	(0)
Other expenses charged by RAILS to SWAN (IT support, etc.)	(103,257)	(74,875)	(66,739)	(65,182)
Total RAILS support to SWAN	349,143	472,000	505,842	598,985

Explanation of FY19 SWAN Fees

The FY19 SWAN membership fee formula was studied and revised this past fiscal year. SWAN Board formally approved the membership fee formula, which now uses separate formula for academic, public, school, and special libraries.

The membership fees for FY16, FY17, and FY18 were 13% lower than in FY15. This budget incorporates the addition of 19 new libraries

Background on SWAN Staffing



SWAN growth & new services require more staff

Eight years ago, SWAN employed 23 staff. The staffing plan was affected initially by 2009 MLS budget cuts, and then in 2010 SWAN implemented a new staffing plan. Five positions were eliminated, either through consolidation of departments, contracted Innovative Interfaces consultants, software automation, and/or contracted answering services. These staff reductions were coupled with stipulations that no new libraries could be added to SWAN membership, nor would SWAN be able to initiate large membership projects.

In 2012 SWAN negotiated a transition of all 16 staff from RAILS to the SWAN organization. When new positions are proposed, the SWAN Board is involved, either directly in approving the Executive Director to create a position, or through its Personnel Committee who will review position descriptions and make a recommendation to the SWAN Board. For this year's budget, the SWAN Executive Director evaluated the needs of supporting the membership of 97 libraries.

Member Services Consultants

Two part-time positions were added as part of additional support needed for SWAN's growing membership. Under current SWAN policy, employees working 30 hours or more per week receive health

benefits and are automatically enrolled in SWAN 401a retirement plan. These positions would be 15 hours per week, which is approximately two working days.

Electronic Resources Integration Consultant

Beginning in April 2015, SWAN has integrated electronic content from a variety sources into the Enterprise catalog. The search tools through EBSCO Discovery Service and EduServ OpenAthens are cutting edge and designed to position SWAN libraries as offering a flexible platform for library users to remotely access online content that is not accessible through Google or other giant search engines. E-book content from three OverDrive consortia, RAILS statewide eRead Illinois content from Baker & Taylor, and Hoopla require management and care. SWAN has created a robust platform with EBSCO and SirsiDynix under the “Article Search” umbrella. Training library staff within the 97 libraries has been primarily conducted through EBSCO webinars, but through the extremely low participation in EBSCO’s online database survey tools, dedicating central personnel at SWAN to manage and work with consortia member personnel will ensure future success of these services.

SWAN libraries subscribe to online content through various vendors. Changes in subscriptions such as new content or non-renewals will require upkeep. Membership instruction and training will be a component of the position, as education in this complex electronic content infrastructure SWAN has created and offered to its libraries.

Group purchases will also be coordinated centrally by SWAN for online content, which was a valuable resource for SWAN libraries in the past. This position would coordinate with the Discovery & User Experience Advisory Group, or a new version of the Electronic Resource Advisory Group made up of member libraries.

This would be a new, full-time position.

Background on Cloud Based Server Infrastructure

The FY19 budget will reflect an important change for SWAN. The servers housed in RAILS Burr Ridge datacenter will be decommissioned, and transitioned to a cloud based storage system. These servers were purchased in 2012 and are due for replacement. SWAN IT has studied the use of cloud based services and compared these services with continuing the “on premise” arrangement, using a “software as a service” arrangement with SirsiDynix, or a cloud-based “infrastructure as a service.” The recommendation from IT is to move forward with Microsoft Azure, utilizing a “Infrastructure as a service” model. Transitioning servers to a cloud infrastructure means SWAN no longer budgets for capital expenses related to ILS server hardware infrastructure. Licensing associated with the physical on-premise servers will also be eliminated from annual operating expenses. SWAN will instead “rent” space from a cloud service and utilize its native backup services. The recommendation to move to the cloud was outlined to Board and membership in a separate written recommendation.

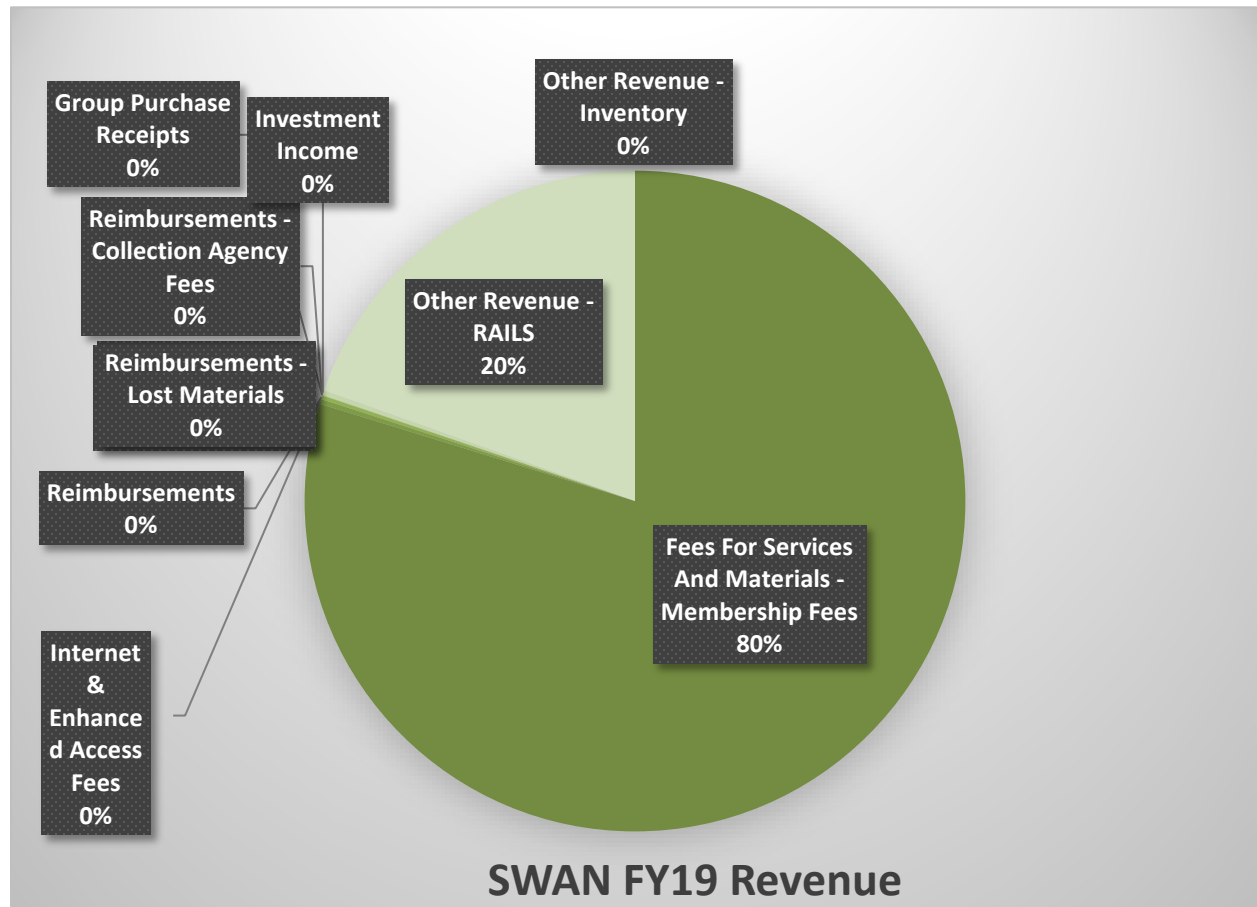
Comparing SWAN FY18 with FY19 Budget for Cloud Infrastructure Impact

Microsoft Azure Expense (Part of the budget line #5310)	\$ 408.00	\$ 33,836.00
ILS Server Expenses (Part of the budget line #5400)		
RedHat Maintenance for SD Production Server	\$ 1,989.79	\$ 1,014.00
RedHatMaintenance for SD Test Server	\$ 267.30	\$ 272.00
RedHat Maintenance for III Production Server	\$ 267.30	\$ -
Vmware 8-Core License Maintenance	\$ 5,809.69	\$ -
Vmware Maintenance for Vcenter utility/appliance	\$ 651.47	\$ -
8-Core Maintenance for Veeam Backup utility	\$ 2,285.14	\$ -
Warranty for (2) Equilogic SANs	\$ 4,276.30	\$ -
Warranty for (2) R910 Servers	\$ 3,443.82	\$ -
SWAN ILS Server Infrastructure Budget	\$ 38,389.62	\$ 36,408.00

Libraries Joining SWAN

Green Hills Public Library District has approached SWAN for membership. Discussions are underway with the SWAN Board and Green Hills for joining SWAN in the FY19 time period. While SWAN member libraries have final approval over Green Hills joining SWAN, this budget includes expenses, reimbursements, and membership fees pro-rated for five months.

REVENUE



SWAN FY19 budget revenue total is \$3,114,401 which is an increase of \$593,480 from the FY18 budget.

#4050 Other Grants

The RAILS Continuing Education grant revenue for the annual user group event, also known as the SWANstravaganza.

#4060 Fees for Services & Materials

This is the total of all full membership fees, including the 19 new libraries. Green Hills Public Library District fees estimated for five months is included.

#4061 Internet & Enhanced Access Fees

The revised FY19 budget incorporated public libraries no longer having SWAN Internet Access available to them. The SWAN Board has not acted on revising the Internet Access membership. Currently, there are no libraries in SWAN under the Enhanced Access level, as those libraries transitioned to Full Membership (Lansing, Oak Park).

#4070 Reimbursements

Fees paid to SWAN for reimbursement for food and refreshments at the summer event. This line has estimated \$25,000 reimbursement from Green Hills Public Library District for one-time expenses related to migrating data into SWAN.

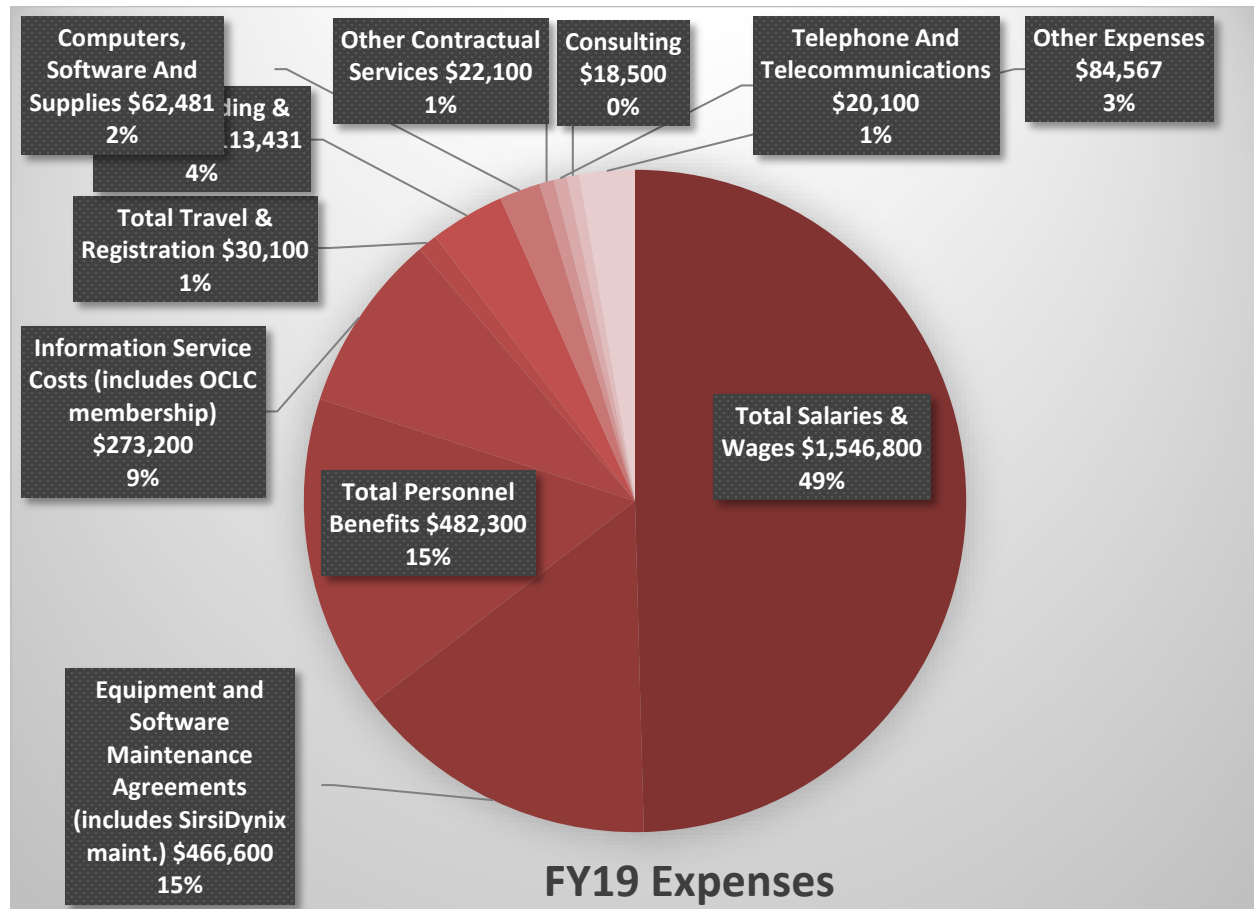
#4075 Group Purchase Receipts

Depending on the fiscal year, SWAN will coordinate a group purchase on behalf of its member libraries. The revenue in this budget line offsets the expense in budget line #5485 Group Purchases. Refer to the description of the expenses in #5485 for any planned group purchases for the budget.

#4090 Other Revenue

RAILS funding support within the one-year FY19 agreement results in direct revenue to SWAN. In the past, this financial support helped make it possible for SWAN membership fees to be lowered 13% and fixed for three years. For the FY19 budget, the RAILS support amount was increased to SWAN, mostly due to RAILS recalculating LLSAP support using SWAN's growth from adding 19 libraries from LINC and MAGIC. This support is included in the FY19 SWAN Membership Fees as an award that reduces fees for public libraries.

EXPENSES



SWAN FY19 budget expenses total is \$3,114,401 which is an increase of \$308,351 from the FY18 budget.

#5000, #5010 & #5020 Salaries

The FY19 personnel budget includes the full-time positions for Electronic Resources Integration Consultant and two part-time Member Services Consultant positions.

#5070 Health, Dental, Life & Disability Insurance

The FY19 budget used the completed January 2018 open enrollment as a basis for the budget. It includes the two new positions estimated expenses.

#5110 Print Materials

This budget line is used for the cost of outside printing of materials for the membership. It was increased in FY19 due to SWAN providing more printed marketing material to member libraries.

#5140 Rent

GASB requires SWAN to record the expense of the 93-month lease prorated per month over the duration of the lease with all anticipated increases. The rent expense will be recorded in #5140 as

\$5,846.31 for each month of the 7 year 9-month lease term. The revised FY17 amount \$52,616.79 was for nine months. The amount of \$70,155.72 will be recorded each year for FY18 through FY24, and \$17,539.38 for FY25, per GASB. The FY19 budget line #5140 will include of the renter's operating expense at \$17,987 and real-estate taxes at \$6,464 on top of the rent expense, as is required in SWAN's lease.

#5150 Utilities

The FY19 budget is based on actual utility costs. As a reminder, the FY17 #5150 budget was an estimate for nine months of utility expenses.

#5160 Property Insurance

Prior to SWAN obtaining a facility lease, the property insurance was just for flood protection. The FY19 budget includes the 800 Quail Ridge furniture and equipment, and the 125 Tower Drive data center equipment. SWAN will retain some equipment in the RAILS data center related to the voice notification (SVA) system.

#5180 Custodial Service & Supplies

FY19 is the full year of service and supplies.

#5190 Other Building Maintenance

This budget line supports the keyless entry system for the facility.

#5250 In-State Travel, #5260 Out-Of-State Travel, & # 5270 Registrations and Meeting, Other Fees

The increase for travel and conference registration allows four SWAN staff to attend COSUGI in the April 2019 location (currently undecided); attendance of one staff at SirsiDynix Consortia Special Interest Group meeting in October 2018 (also, location to be determined); attendance for one staff at one IT conference. Local conferences from Management Association and ILA are also included in the FY19 budget. The rental of the Moraine Valley Business Center for the 2017 SWAN users event is included at \$3,800 but will be partially offset through a RAILS Continuing Education grant and registration fees for the SWAN event.

#5280 Conferences and Continuing Education Meetings

This line is used for event speaker honorariums, materials and supplies, travel for speakers, meeting expenses, etc. Meeting space expenses for the annual library user event called the SWANstravaganza are recorded in this budget line. The majority of the expenses for the annual event are reimbursed in line #4050 Other Grants and #4070 Reimbursements. Expenses associated with training for new SWAN positions would be recorded in this budget line.

#5300 Liability Insurance

FY17 budget included added coverage for cybercrime. This budget line in FY19 reflects current expenses, which have been evaluated and adjusted.

#5310 Computers, Software and Supplies

SWAN's use of cloud based servers are included in this budget line. The \$33,836 new expense is offset partially by expenses eliminated from the on-premise licensing. Server licensing in #5400 Equipment Repair and Maintenance Agreements was reduced by (\$17,705) in FY19.

#5320 General Office Supplies & Equipment

Furniture purchase for the new facility is recorded in #5320 for the revised FY17 budget. The FY17 budget eliminated notice paper purchase (pressure seal mailers) for an annual savings of \$5,134. Office supplies for the facility are budgeted for FY19 based on actual expenses for restocking of consumed supplies.

#5380 Telephone and Telecommunications

The annual expense for Internet service provider for the facility, and phone service.

#5390 Equipment Rental

The annual expense for the office copier.

#5400 Equipment Repair and Maintenance Agreements

This line includes budgeted SirsiDynix maintenance and costs for supporting the SWAN ILS on-premise servers. Increases include additional SirsiDynix services and licensing for 19 new full member libraries.

The #5400 line also includes the subscription to the EBSCO provided proxy service OpenAthens. The annual cost of this subscription increased from \$32,500 to \$50,250 for all 97 libraries. OpenAthens is a requirement to allow the integrated EBSCO Discovery Service (EDS) "Article Search" in Enterprise authenticate home or remote patrons against the SWAN patron database.

Server licensing in #5400 Equipment Repair and Maintenance Agreements was reduced by (\$17,705) through SWAN transitioning to cloud based server infrastructure.

Maintenance and support for all SWAN Global Maintenance Enabled SonicWall Hardware (100 nodes) is budgeted with a 5% anticipated increase, for a total amount of \$11,025. The SonicWall "GMS" allows SWAN to operate with virtual private network (VPN) security throughout its ILS network traffic. The use of a VPN within SWAN will remain even with ILS servers transitioned to a cloud based infrastructure.

#5430 Consulting

The FY19 budget for Consulting includes services for strategic planning.

#5440 Contractual Staff

Unique Integrated Communications is an answering service utilized for evening and weekend SWAN membership support.

#5450 Information Service Costs

This budget line includes \$211,800 total OCLC costs. The enhanced catalog expenses such as book jacket covers and audiovisual material artwork in the SWAN Enterprise OPAC are recorded in this budget line. The FY17 budget increased due to the OCLC fees for Franklin Park and Lansing Public Library. The FY19 OCLC expense increased \$60,761 due to the 19 libraries becoming SWAN members, and an anticipated 3% increase overall. SWAN provides OCLC membership for all libraries.

#5480 Other Contractual Services

SWAN began contracting with Unique Management Services for notice printing in November 2016. The service cost is per printed notice; the number of notices printed decreased once SVA telephone notification began, and decreased further once item automatic renewals begin in July 2017. The FY17 budget cost for Unique to print SWAN notices was set at \$18,695. The FY18 budget contained an error: it was only showing 1 month of notice printing. The FY19 budget is based on Unique Management Services invoices from July 2017 through October 2017, reflecting the lower printed notice counts due to SVA and automatic renewals.

#5485 Group Purchase

This budget line in FY19 reflects one group purchase arrangement. SWAN negotiated a group discount during the Express Lane self-check transition to Envisionware OneStop. All the expenses in this budget line are offset within the revenue line #4075 Group Purchase Receipts.

Prior fiscal years reflected the replacement and offsetting revenue for end-of-life SonicWall firewalls. These have all been replaced as of FY19.

#5515 Miscellaneous E-Commerce Fees

SWAN no longer manages the online credit card payments centrally. The \$15,000 in estimated expenses was set to zero for FY16, and will remain so going forward.

RESERVES

Please refer to the SWAN Six Year Reserves Plan. The costs of the 2015 ILS migration were lower than anticipated, leaving SWAN reserves in a healthy position. The move to an independent facility for SWAN was completed in FY17, so it is no longer included in the updated plan.

SWAN not collect a reserve contingency for FY19, as was also done for FY16, FY17, and FY18. The SWAN Treasurer assesses reserves commitment based on 6-year plan, and update the reserve worksheet at the start of each new fiscal year.

The reserves worksheet includes \$95,000 revenue received from the Joining Fee for the 19 new libraries. However, the worksheet reflects a big change in that SWAN's server infrastructure will no longer be budgeted for and expensed/depreciated. Prior to FY19, the worksheet reflected \$123,000 expense for the first part of a server replacement, specifically the storage area network (also called a SAN) and included \$48,000 for second part of the server replacement, as part of a plan to replace our entire ILS

server infrastructure acquired in 2012. With the use of cloud based servers, the capital plan no longer requires SWAN to spend the \$123,000 and \$48,000.

The cost for an ILS migration at \$465,740 is based on the most recent SirsiDynix migration. The five-year agreement with SirsiDynix ends in April 2020.

SWAN FEES COMMITTEE

The SWAN Board formed the SWAN Fees Committee to provide a recommendation to the SWAN Board in for implementation in FY19. The recommendation was accepted by the SWAN Board November 17, 2017.

DRAFT

		Revised FY17 Budget (Approved Sept 1, 2016)	FY17 Actual	FY18 Budget (Approved March 2, 2017)	FY19 Budget Draft (Feb 6, 2018)	Chart of Accounts Definition & Description of Budget Line Use
Revenue						
4050	Other Grants			214,659	1,200	Grants awarded to LLSAP that do not originate from a State or federal government source are classified as other grants. RAILS LLSAP Catalog Grant for one-time costs of adding new member libraries, and RAILS Continuing Education grant are recorded in this line.
4060	Fees For Services And Materials - Membership Fees	1,677,470	1,677,466	1,779,720	2,468,716	Any fees for services and materials LLSAP charges its member libraries are generally recorded as revenue in the proprietary fund. Full membership fees are recorded in this line.
4061	Internet & Enhanced Access Fees	9,098	8,794	7,300	7,300	This revenue line is a breakout of the Fees for Services & Materials as defined in the Chart of Accounts
4062	Maintenance Fees	-		-	-	
4070	Reimbursements		8,723	-	30,500	Library reimbursement for one-time migration costs and/or reimbursement for event meals included in this budget line. Consist of amounts charged to a third party equal to a cost incurred from an external source on behalf of that third part. For example, if the LLSAP purchases an item or service for a member library and then bills the member library for the cost of the item or service.
4071	Reimbursements - Lost Materials		(9,818)	-	-	Breakout line for Reimbursements: reciprocal borrowing and interlibrary loan losses.
4072	Reimbursements - Collection Agency Fees	900	(18)	900	900	Breakout line for Reimbursements: reciprocal borrowing and interlibrary loan loss collection agency fees.
4075	Group Purchase Receipts	15,695	594	5,700		- Breakout line for Reimbursements: group purchases such as credit card swipes, and Envisionware for member libraries.
4080	Investment Income	6,800	6,438	6,800	6,800	Investment earnings by the LLSAP on its investments are recorded as investment income in the fund in which the related investments are recorded.
4090	Other Revenue - RAILS	472,000	485,670	505,842	598,985	Any revenue that cannot be classified in any of the above accounts should be included as other revenue in the fund to which it relates. Examples of other revenue include, but are not limited to, donations from private sources, fines and donated services by one fund of the LLSAP on behalf of another fund of the LLSAP. The RAILS general fund paying for the LLSAP resource sharing services is recorded in this budget line.
4095	Other Revenue - Inventory				-	
Total Revenue		2,181,963	2,177,849	2,520,921	3,114,401	
Expenses						
5000	Library Professionals	257,343	226,401	347,700	323,900	Salaries or wages paid to employees whose position descriptions ordinarily require an MLS, MIS, or above.

		Revised FY17 Budget (Approved Sept 1, 2016)	FY17 Actual	FY18 Budget (Approved March 2, 2017)	FY19 Budget Draft (Feb 6, 2018)	Chart of Accounts Definition & Description of Budget Line Use
5010	Other Professionals	681,151	751,972	778,400	964,700	Salaries or wages paid to employees whose position descriptions ordinarily require a bachelor's degree or above, excluding library professionals.
5020	Support Services	271,781	237,469	292,400	258,200	Salaries or wages paid to employees whose positions are not classified as library professionals or other professionals.
5025	Vacation Expense		2,805	-	2,800	Per GASB, Vacation Expense is the account created to segregate the amount of the expense incurred by SWAN for the current years' addition or subtraction to the balance of earned but unused staff vacation time. The Balance Sheet reflects the fact that Compensated Absences has been adjusted for the year-end to show, as of June 30 of the given fiscal year, the current value of this earned but unused vacation. This is more a potential than actual liability as employees most likely will use most of their vacations while being employed.
Total Salaries & Wages		1,210,275	1,218,646	1,418,500	1,549,600	
5030	Social Security Taxes	83,800	89,652	108,600	118,400	Payroll taxes and fringe benefits-- employer's share only. Social Security taxes (FICA).
5040	State Unemployment Ins.	-	5,229	-	-	
5050	Worker's Compensation	2,200	2,536	2,200	2,200	
5060	Retirement Benefits	106,400	116,473	130,500	141,600	Payroll taxes and frindge benefits - employer's share only. Retirement benefits - IMRF contributions, pension, etc.
5070	Health, Dental, Life And Disability Insurance	159,100	166,822	185,900	232,300	Payroll taxes and fringe benefits-- employer's share only. Health, dental and life insurance
5080	Other Fringe Benefits	2,500	-	2,500	2,500	Tuition reimbursement benefit for employees
5085	Wellness Benefits	5,100	2,005	5,100	5,100	As a benefit to all employees, SWAN will reimburse up to \$35 per month/\$420 per year for wellness-related activities. This benefit will be considered taxable income, and paid via the payroll process. Wellness-related activities are those that result in a direct physical, nutritional, or other health-related benefit.
5100	Recruiting	1,500	195	900	900	Costs for personnel search, advertising of the position.
Total Personnel Benefits		360,600	382,911	435,700	503,000	
5110	Print Materials	8,000	4,090	8,000	8,000	Books, periodicals, newspapers, pamphlets, continuations, standing orders, loose-leaf services, etc.
5130	E-Resources	500	375	500	500	Subscription to online publications.
Total Library Materials		8,500	4,465	8,500	8,500	
5140	Rent	70,955	50,124	94,607	101,044	Rent/lease payments for use of property and buildings not owned.
5150	Utilities	10,350	3,311	13,800	5,400	Charges for electricity, heat and water, but not telephone charges.
5160	Property Insurance	1,200	1,417	1,200	1,476	Insurance premiums for build and ground and all contents.

		Revised FY17 Budget (Approved Sept 1, 2016)	FY17 Actual	FY18 Budget (Approved March 2, 2017)	FY19 Budget Draft (Feb 6, 2018)	Chart of Accounts Definition & Description of Budget Line Use
5170	Repairs & Maintenance	860	609	200	200	Expenditures for lawn care, snow removal, maintenance supplies, other facility maintenance.
5180	Custodial Service & Supplies	7,200	6,486	9,300	8,500	Includes costs for janitors and caretakers who are not employees, cleaning supplies, etc.
5190	Other Building Maintenance	460	150	580	100	Includes trash removal, exterminating, window washing, fire and alarm service.
Total Building & Grounds		91,025	62,096	119,687	116,720	
5250	In-State Travel	1,000	2,030	2,200	2,200	Expenditures for overnight lodging, fares for airfare, planes, trains, taxicabs, auto rental, meals, etc. incurred in Illinois.
5260	Out-Of-State Travel	11,281	4,538	10,400	11,000	Same items listed above incurred outside of Illinois
5270	Registrations And Meeting, Other Fees	8,500	3,727	2,900	2,900	Includes costs and fees for staff and board members enrolling in seminars, conferences, and educational courses. Includes board meeting expenses, official functions, and meals at meetings.
5280	Conferences and Continuing Education Meetings	5,840	22,672	14,000	14,000	Costs for honorariums, materials and supplies, travel for speakers, meeting expenses, etc.
Total Travel & Registration		26,621	32,967	29,500	30,100	
5290	Public Relations	-	-	-	-	Charges for publicity, advertising, classified advertising, promotional materials, outside printing and design of promotional materials. Includes library awareness activities and monogramming of promotional type clothing.
5300	Liability Insurance	7,600	8,335	7,600	8,900	Insurance premiums for bonding, errors and omissions, personal and director's liability, umbrella packages, etc.
5310	Computers, Software And Supplies	115,365	95,027	22,600	62,481	Software and supplies below \$5,000.
5320	General Office Supplies And Equipment	89,400	82,194	9,000	9,000	Paper, office supplies, such as pencils, paper clips, etc. and equipment costing less than \$5,000.
5330	Postage	-	2,505	900	900	Stamps, postage machine refills, overnight express, UPS, parcel insurance, etc.
5370	Other Supplies	-	-	-	-	
5380	Telephone And Telecommunications	12,083	12,844	19,900	20,100	Tolls and taxes for local and long distance voice calls, data lines, data circuits, and FAX
5390	Equipment Rental	3,200	2,079	2,700	3,700	Payments made for use of equipment, computers, copy machines, etc., which are neither owned nor part of a lease-purchase agreement.

		Revised FY17 Budget (Approved Sept 1, 2016)	FY17 Actual	FY18 Budget (Approved March 2, 2017)	FY19 Budget Draft (Feb 6, 2018)	Chart of Accounts Definition & Description of Budget Line Use
5400	Equipment and Software Maintenance Agreements	335,000	296,826	373,565	468,200	Actual charges to service, fix or maintain equipment, computers, copy machines, and includes expenditures for contracts to service or perform preventative maintenance or repairs on equipment, copy machines, etc. for a fixed price. Line used by LLSAP for vendor maintenance for integrated library system, server operating system maintenance, and other server infrastructure expenses.
5410	Legal	1,800	11,309	1,800	1,800	Fees for attorneys' services, including retainers.
5420	Accounting	5,300	5,300	5,300	10,000	Fees for audits, outside services for bookkeeping and payroll processing, etc.
5430	Consulting	17,000	19,643	17,000	18,500	Fees paid to professionals outside of LLSAP for services other than legal or accounting, such as computer consultants, independent library consultants, or appraisers.
5435	Payroll Service Fees	2,100	2,857	2,100	3,800	Breakout line for Contractual Staff budget: payroll service fees, costs associated with reporting requirements.
5440	Contractual Staff	2,400	2,400	2,400	2,400	Fees paid directly to persons engaged in contractual work or service arrangements with the LLSAP.
5450	Information Service Costs	199,500	208,226	200,139	273,200	Computer and software services and fees, online services such as OCLC, Dialog, automation services, database services, system use fees, library circulation system, retrospective conversion, etc. Ebook services, Novelist, MARCIVE, catalog enhancements.
5460	Contract Agreement W/ Systems, Member Libraries & Cooperatives	-	3,704	119,659	-	May include domain name registration, online survey tools for use purchased in a specified period of time, website encryption services, and other outside services. Contract for notice printing, collection services for unreturned materials are recorded in this line.
5480	Other Contractual Services	6,900	26,409	2,400	22,100	May include domain name registration, online survey tools for use purchased in a specified period of time, website encryption services, and other outside services. Contract for notice printing, collection services for unreturned materials are recorded in this line.
5485	Group Purchases	15,695	594	5,700	-	Breakout line for Contractual Services: see Revenue line #4075 Group Purchase Receipts for expense reimbursements.
5495	(Gain)/Loss on Asset Disposal			-		
5500	Professional Association Membership Dues	400	490	400	400	Costs for various individual or LLSAP memberships in professional organizations.
5510	Miscellaneous	1,000	6,225	1,000	1,000	Includes, but is not limited to, bank charges, printed checks, cash shortages and overages, lost books and equipment, allowable interlibrary loan charges (including photocopying charges), and film rentals
5515	Miscellaneous - E-Commerce Fees	-	181	-	-	
5590	Interest	-		-	-	

	Revised FY17 Budget (Approved Sept 1, 2016)	FY17 Actual	FY18 Budget (Approved March 2, 2017)	FY19 Budget Draft (Feb 6, 2018)	Chart of Accounts Definition & Description of Budget Line Use
Subtotal Expenses	2,511,764	2,488,234	2,806,050	3,114,401	
5490 Depreciation	65,236	65,739	65,236	34,167	For proprietary funds and government-wide financial statements only. Depreciation charges are intended to allocate the cost of a fixed asset over the estimated useful life of the unit in a systematic and rational manner using the straight-line method.
Total Expenses	2,511,764	2,488,234	2,806,050	3,114,401	Total operating expenses, not including Depreciation.
Total Revenue (from above)	2,181,963	2,177,849	2,520,921	3,114,401	
Excess of revenues over (under) estimated	(329,801)	(310,385)	(285,129)	0	
Deduction from Reserves	329,801	310,385	285,129	0	

SWAN Six Year Reserves Plan: Updated for FY19 Budget

Capital Expenditures (anything over \$5,000)	FY18	FY19	FY20	FY21	FY22	FY23
	July 2017-June 2018	July 2018-June 2019	July 2019-June 2020	July 2020-June 2021	July 2021-June 2022	July 2022-June 2023
Prior Year Balance	\$2,079,439	\$1,889,310	\$1,879,310	\$1,879,310	\$1,879,310	\$1,869,310
Reserves collected & Impact Fee	\$95,000	\$0	\$0	\$0	\$0	\$0
Server replacement: no longer required with cloud-based Infrastructure-as-a-Service	\$0	\$0	\$0	\$0	\$0	\$0
Vendor services: estimated consulting for server OS upgrades, migrations, etc.		(\$10,000)			(\$10,000)	
Firewall replacement: no longer required with cloud-based Intrastructure-as-a-Service	\$0	\$0	\$0	\$0	\$0	\$0
Reserves needed for deficit budget	(\$285,129)	\$0	\$0	\$0	\$0	\$0
Future ILS Migration Budget (\$465,740)						
Total	\$1,889,310	\$1,879,310	\$1,879,310	\$1,879,310	\$1,869,310	\$1,869,310
Maintain 4 months operating in reserve (policy)	(\$920,600)	(\$1,048,600)	(\$1,048,600)	(\$1,048,600)	(\$1,048,600)	(\$1,048,600)
Over/(Under) Reserve Policy	\$968,710	\$830,710	\$830,710	\$830,710	\$820,710	\$820,710
Operating Budget (5% increases each year after FY19)	\$2,654,845	\$3,114,401	\$3,270,121	\$3,433,627	\$3,605,309	\$3,785,574

* Cloud subscription: Infrastructure-as-a-Service (IaaS) is the recommended direction for SWAN for its future servers. IaaS is a subscription that will be an expense in the operating budget. The result is there is no server hardware purchased, therefore no need to budget as a capital expenditure.

Chart 1: Proposed Fee Chart for FY19 SWAN Budget
(July 1, 2018 - June 30, 2019)

SWAN Library	Type	Base +						Public Library Fee Total (FY19 Est)	
		Public Library Base Fee	Public Library Funding Fee	School Library	Special Library	Academic Library	Funding Fees (No State LLSAP Grant)		State LLSAP Grant Discount
Acorn Public Library District	Public	\$ 17,154	\$ 9,985				\$ 27,139	(\$6,511)	\$ 20,628
Alsip-Merrionette Park Public Library District	Public	\$ 17,154	\$ 22,837				\$ 39,991	(\$6,511)	\$ 33,480
Batavia Public Library District	Public	\$ 17,154	\$ 33,791				\$ 50,945	(\$6,511)	\$ 44,434
Bedford Park Public Library District	Public	\$ 17,154	\$ 12,401				\$ 29,555	(\$6,511)	\$ 23,044
Beecher Community Library District	Public	\$ 17,154	\$ 2,891				\$ 20,045	(\$6,511)	\$ 13,534
Bellwood Public Library	Public	\$ 17,154	\$ 17,322				\$ 34,476	(\$6,511)	\$ 27,965
Bensenville Community Public Library District	Public	\$ 17,154	\$ 14,867				\$ 32,021	(\$6,511)	\$ 25,510
Bensenville Elementary School District #2	School			\$ 17,500			\$ 17,500		\$ 17,500
Berkeley Public Library	Public	\$ 17,154	\$ 3,654				\$ 20,808	(\$6,511)	\$ 14,297
Berwyn Public Library	Public	\$ 17,154	\$ 33,016				\$ 50,170	(\$6,511)	\$ 43,659
Bloomington Public Library	Public	\$ 17,154	\$ 28,051				\$ 45,205	(\$6,511)	\$ 38,694
Blue Island Public Library	Public	\$ 17,154	\$ 10,887				\$ 28,041	(\$6,511)	\$ 21,530
Bridgeview Public Library	Public	\$ 17,154	\$ 10,372				\$ 27,525	(\$6,511)	\$ 21,015
Broadview Public Library District	Public	\$ 17,154	\$ 12,858				\$ 30,011	(\$6,511)	\$ 23,501
Brookfield Public Library	Public	\$ 17,154	\$ 21,528				\$ 38,682	(\$6,511)	\$ 32,171
Brookfield Zoo	Special				\$ -		\$ -		\$ -
Calumet City Public Library	Public	\$ 17,154	\$ 15,642				\$ 32,796	(\$6,511)	\$ 26,285
Calumet Park Public Library	Public	\$ 17,154	\$ 1,647				\$ 18,801	(\$6,511)	\$ 12,290
Carol Stream Public Library	Public	\$ 17,154	\$ 34,617				\$ 51,770	(\$6,511)	\$ 45,260
Chicago Heights Public Library	Public	\$ 17,154	\$ 8,807				\$ 25,961	(\$6,511)	\$ 19,450
Chicago Ridge Public Library	Public	\$ 17,154	\$ 14,327				\$ 31,481	(\$6,511)	\$ 24,971
Cicero Public Library	Public	\$ 17,154	\$ 20,155				\$ 37,309	(\$6,511)	\$ 30,798
Clarendon Hills Public Library	Public	\$ 17,154	\$ 7,004				\$ 24,158	(\$6,511)	\$ 17,647
Crestwood Public Library District	Public	\$ 17,154	\$ 5,084				\$ 22,238	(\$6,511)	\$ 15,727
Crete Public Library District	Public	\$ 17,154	\$ 17,102				\$ 34,256	(\$6,511)	\$ 27,745
Dolton Public Library District	Public	\$ 17,154	\$ 11,536				\$ 28,690	(\$6,511)	\$ 22,179
Downers Grove Public Library	Public	\$ 17,154	\$ 45,725				\$ 62,879	(\$6,511)	\$ 56,368
Eisenhower Public Library District	Public	\$ 17,154	\$ 32,626				\$ 49,779	(\$6,511)	\$ 43,269
Elmwood Park Public Library	Public	\$ 17,154	\$ 15,022				\$ 32,175	(\$6,511)	\$ 25,665
Evergreen Park Public Library	Public	\$ 17,154	\$ 10,727				\$ 27,881	(\$6,511)	\$ 21,370
Flossmoor Public Library	Public	\$ 17,154	\$ 12,593				\$ 29,747	(\$6,511)	\$ 23,236
Forest Park Public Library	Public	\$ 17,154	\$ 17,207				\$ 34,361	(\$6,511)	\$ 27,850
Frankfort Public Library District	Public	\$ 17,154	\$ 21,536				\$ 38,690	(\$6,511)	\$ 32,179
Franklin Park Public Library District	Public	\$ 17,154	\$ 16,536				\$ 33,690	(\$6,511)	\$ 27,179
Geneva Public Library District	Public	\$ 17,154	\$ 46,517				\$ 63,671	(\$6,511)	\$ 57,160
Glen Ellyn Public Library	Public	\$ 17,154	\$ 39,176				\$ 56,330	(\$6,511)	\$ 49,819
Glenwood-Lynwood Public Library District	Public	\$ 17,154	\$ 10,072				\$ 27,226	(\$6,511)	\$ 20,716
Grande Prairie Public Library District	Public	\$ 17,154	\$ 14,264				\$ 31,417	(\$6,511)	\$ 24,907
Harvey Public Library District	Public	\$ 17,154	\$ 8,618				\$ 25,771	(\$6,511)	\$ 19,261
Hillside Public Library	Public	\$ 17,154	\$ 10,727				\$ 27,880	(\$6,511)	\$ 21,370
Hinsdale Public Library	Public	\$ 17,154	\$ 27,909				\$ 45,062	(\$6,511)	\$ 38,552
Hodgkins Public Library District	Public	\$ 17,154	\$ 5,345				\$ 22,499	(\$6,511)	\$ 15,988
Homewood Public Library District	Public	\$ 17,154	\$ 21,539				\$ 38,693	(\$6,511)	\$ 32,182
Indian Prairie Public Library District	Public	\$ 17,154	\$ 33,949				\$ 51,103	(\$6,511)	\$ 44,592
Itasca Community Library	Public	\$ 17,154	\$ 14,158				\$ 31,312	(\$6,511)	\$ 24,801
Justice Public Library District	Public	\$ 17,154	\$ 3,105				\$ 20,258	(\$6,511)	\$ 13,748
Kaneville Public Library District	Public	\$ 17,154	\$ 792				\$ 17,946	(\$6,511)	\$ 11,435
La Grange Public Library	Public	\$ 17,154	\$ 22,090				\$ 39,244	(\$6,511)	\$ 32,733
LaGrange Park Public Library District	Public	\$ 17,154	\$ 17,581				\$ 34,735	(\$6,511)	\$ 28,224
Lansing Public Library	Public	\$ 17,154	\$ 25,011				\$ 42,164	(\$6,511)	\$ 35,654
Lyons Public Library	Public	\$ 17,154	\$ 6,685				\$ 23,838	(\$6,511)	\$ 17,328
Markham Public Library	Public	\$ 17,154	\$ 7,767				\$ 24,921	(\$6,511)	\$ 18,410
Matteson Area Public Library District	Public	\$ 17,154	\$ 23,903				\$ 41,057	(\$6,511)	\$ 34,546
Maywood Public Library District	Public	\$ 17,154	\$ 12,771				\$ 29,924	(\$6,511)	\$ 23,414
McCook Public Library District	Public	\$ 17,154	\$ 3,595				\$ 20,748	(\$6,511)	\$ 14,238
Melrose Park Public Library	Public	\$ 17,154	\$ 9,785				\$ 26,939	(\$6,511)	\$ 20,428
Messenger Public Library of North Aurora	Public	\$ 17,154	\$ 16,324				\$ 33,478	(\$6,511)	\$ 26,967
Midlothian Public Library	Public	\$ 17,154	\$ 11,915				\$ 29,069	(\$6,511)	\$ 22,558
Morton Arboretum	Special				\$ 12,500		\$ 12,500		\$ 12,500
Nancy L. McConathy Public Library District	Public	\$ 17,154	\$ 3,058				\$ 20,212	(\$6,511)	\$ 13,701
National University of Health Sciences	Academic					\$ 14,333	\$ 14,333		\$ 14,333
North Riverside Public Library District	Public	\$ 17,154	\$ 8,888				\$ 26,042	(\$6,511)	\$ 19,531
Northlake Public Library District	Public	\$ 17,154	\$ 16,968				\$ 34,122	(\$6,511)	\$ 27,611
Oak Brook Public Library	Public	\$ 17,154	\$ 10,299				\$ 27,453	(\$6,511)	\$ 20,942
Oak Lawn Public Library	Public	\$ 17,154	\$ 52,971				\$ 70,124	(\$6,511)	\$ 63,614
Oak Park Public Library	Public	\$ 17,154	\$ 71,803				\$ 88,957	(\$6,511)	\$ 82,446
Palos Heights Public Library	Public	\$ 17,154	\$ 14,038				\$ 31,192	(\$6,511)	\$ 24,681
Palos Park Public Library	Public	\$ 17,154	\$ 4,218				\$ 21,372	(\$6,511)	\$ 14,861

Chart 1: Proposed Fee Chart for FY19 SWAN Budget
(July 1, 2018 - June 30, 2019)

SWAN Library	Type	Base +						Public Library Fee Total (FY19 Est)	
		Public Library Base Fee	Public Library Funding Fee	School Library	Special Library	Academic Library	Funding Fees (No State LLSAP Grant)		State LLSAP Grant Discount
Park Forest Public Library	Public	\$ 17,154	\$ 20,237				\$ 37,391	(\$6,511)	\$ 30,880
Prairie State College	Academic					\$ 18,667	\$ 18,667		\$ 18,667
Prairie Trails Public Library District	Public	\$ 17,154	\$ 17,689				\$ 34,843	(\$6,511)	\$ 28,332
Richton Park Public Library District	Public	\$ 17,154	\$ 9,075				\$ 26,228	(\$6,511)	\$ 19,718
River Forest Public Library	Public	\$ 17,154	\$ 12,023				\$ 29,176	(\$6,511)	\$ 22,666
River Grove Public Library District	Public	\$ 17,154	\$ 4,078				\$ 21,232	(\$6,511)	\$ 14,721
Riverdale Public Library District	Public	\$ 17,154	\$ 5,055				\$ 22,209	(\$6,511)	\$ 15,698
Riverside Public Library	Public	\$ 17,154	\$ 10,403				\$ 27,557	(\$6,511)	\$ 21,046
Saint Charles Public Library District	Public	\$ 17,154	\$ 75,388				\$ 92,542	(\$6,511)	\$ 86,031
Schiller Park Public Library	Public	\$ 17,154	\$ 9,834				\$ 26,988	(\$6,511)	\$ 20,477
South Holland Public Library	Public	\$ 17,154	\$ 19,135				\$ 36,289	(\$6,511)	\$ 29,778
Steger-South Chicago Heights Public Library District	Public	\$ 17,154	\$ 3,969				\$ 21,123	(\$6,511)	\$ 14,612
Stickney-Forest View Public Library District	Public	\$ 17,154	\$ 10,148				\$ 27,301	(\$6,511)	\$ 20,791
Sugar Grove Public Library District	Public	\$ 17,154	\$ 12,713				\$ 29,867	(\$6,511)	\$ 23,356
Summit Public Library District	Public	\$ 17,154	\$ 8,824				\$ 25,977	(\$6,511)	\$ 19,467
Theosophical Society in America	Special				\$ 12,500		\$ 12,500		\$ 12,500
Thomas Ford Memorial Library	Public	\$ 17,154	\$ 12,748				\$ 29,902	(\$6,511)	\$ 23,391
Thornton Public Library	Public	\$ 17,154	\$ 1,230				\$ 18,384	(\$6,511)	\$ 11,873
Tinley Park Public Library	Public	\$ 17,154	\$ 49,932				\$ 67,086	(\$6,511)	\$ 60,575
Town and Country Public Library District	Public	\$ 17,154	\$ 15,162				\$ 32,316	(\$6,511)	\$ 25,805
University Park Public Library District	Public	\$ 17,154	\$ 5,216				\$ 22,370	(\$6,511)	\$ 15,859
Villa Park Public Library	Public	\$ 17,154	\$ 20,213				\$ 37,366	(\$6,511)	\$ 30,856
West Chicago Public Library District	Public	\$ 17,154	\$ 20,921				\$ 38,075	(\$6,511)	\$ 31,564
Westchester Public Library	Public	\$ 17,154	\$ 12,125				\$ 29,278	(\$6,511)	\$ 22,768
Westmont Public Library	Public	\$ 17,154	\$ 18,025				\$ 35,179	(\$6,511)	\$ 28,668
William Leonard Public Library District	Public	\$ 17,154	\$ 2,054				\$ 19,208	(\$6,511)	\$ 12,697
Wood Dale Public Library District	Public	\$ 17,154	\$ 23,066				\$ 40,220	(\$6,511)	\$ 33,709
Woodridge Public Library	Public	\$ 17,154	\$ 35,984				\$ 53,138	(\$6,511)	\$ 46,627
Worth Public Library District	Public	\$ 17,154	\$ 7,551				\$ 24,705	(\$6,511)	\$ 18,194

Chart 2: County Tax Payments for 2015

Library Name	Cook County Treasurer Tax Year 2015	DuPage County Treasurer Tax Year 2015	Kane County Treasurer Tax Year 2015	Will County County Treasurer Tax Year 2015	Total Tax Revenue Issued	Bond Amount (Removed)	County Total
Acorn Public Library District	\$1,063,259.16				\$1,063,259.16	(\$61,605.00)	\$1,001,654.16
Alsip-Merrionette Park Public Library District	\$2,876,309.71				\$2,876,309.71	(\$585,325.00)	\$2,290,984.71
Batavia Public Library District			\$4,098,355.11		\$4,098,355.11	(\$708,500.00)	\$3,389,855.11
Bedford Park Public Library District	\$1,244,033.55				\$1,244,033.55	\$0.00	\$1,244,033.55
Beecher Community Library District				\$290,005.92	\$290,005.92	\$0.00	\$290,005.92
Bellwood Public Library	\$1,737,746.43				\$1,737,746.43	\$0.00	\$1,737,746.43
Bensenville Community Public Library District	\$0.00	\$1,491,454.94			\$1,491,454.94	\$0.00	\$1,491,454.94
Berkeley Public Library	\$366,585.94				\$366,585.94	\$0.00	\$366,585.94
Berwyn Public Library	\$3,312,117.12				\$3,312,117.12	\$0.00	\$3,312,117.12
Bloomington Public Library		\$2,814,058.70			\$2,814,058.70	\$0.00	\$2,814,058.70
Blue Island Public Library	\$1,092,171.53				\$1,092,171.53	\$0.00	\$1,092,171.53
Bridgeview Public Library	\$1,294,514.14				\$1,294,514.14	(\$254,062.50)	\$1,040,451.64
Broadview Public Library District	\$1,289,842.17				\$1,289,842.17	\$0.00	\$1,289,842.17
Brookfield Public Library	\$2,159,682.92				\$2,159,682.92	\$0.00	\$2,159,682.92
Calumet City Public Library	\$1,669,206.25				\$1,669,206.25	(\$100,000.00)	\$1,569,206.25
Calumet Park Public Library	\$165,208.74				\$165,208.74	\$0.00	\$165,208.74
Carol Stream Public Library		\$3,472,670.30			\$3,472,670.30	\$0.00	\$3,472,670.30
Chicago Heights Public Library	\$883,511.47				\$883,511.47	\$0.00	\$883,511.47
Chicago Ridge Public Library	\$1,437,306.63				\$1,437,306.63	\$0.00	\$1,437,306.63
Cicero Public Library	\$2,021,899.07				\$2,021,899.07	\$0.00	\$2,021,899.07
Clarendon Hills Public Library		\$702,655.41			\$702,655.41	\$0.00	\$702,655.41
Crestwood Public Library District	\$510,032.37				\$510,032.37	\$0.00	\$510,032.37
Crete Public Library District				\$1,715,674.26	\$1,715,674.26	\$0.00	\$1,715,674.26
Dolton Public Library District	\$1,157,288.96				\$1,157,288.96	\$0.00	\$1,157,288.96
Downers Grove Public Library		\$5,201,104.86			\$5,201,104.86	(\$614,076.00)	\$4,587,028.86
Eisenhower Public Library District	\$4,046,747.84				\$4,046,747.84	(\$773,805.00)	\$3,272,942.84
Elmwood Park Public Library	\$1,506,928.70				\$1,506,928.70	\$0.00	\$1,506,928.70
Evergreen Park Public Library	\$1,076,091.15				\$1,076,091.15	\$0.00	\$1,076,091.15
Flossmoor Public Library	\$1,263,321.04				\$1,263,321.04	\$0.00	\$1,263,321.04
Forest Park Public Library	\$1,726,171.45				\$1,726,171.45	\$0.00	\$1,726,171.45
Frankfort Public Library District	\$18,282.02			\$2,142,178.99	\$2,160,461.01	\$0.00	\$2,160,461.01
Franklin Park Public Library District	\$1,658,843.46				\$1,658,843.46	\$0.00	\$1,658,843.46
Geneva Public Library District			\$4,666,505.88		\$4,666,505.88	\$0.00	\$4,666,505.88
Glen Ellyn Public Library		\$4,440,398.28			\$4,440,398.28	(\$510,328.00)	\$3,930,070.28
Glenwood-Lynwood Public Library District	\$1,465,364.54				\$1,465,364.54	(\$454,912.50)	\$1,010,452.04
Grande Prairie Public Library District	\$1,430,906.05				\$1,430,906.05	\$0.00	\$1,430,906.05
Harvey Public Library District	\$864,504.45				\$864,504.45	\$0.00	\$864,504.45
Hillside Public Library	\$1,076,065.08				\$1,076,065.08	\$0.00	\$1,076,065.08
Hinsdale Public Library	\$346,010.14	\$2,533,939.27			\$2,879,949.41	(\$80,212.00)	\$2,799,737.41
Hodgkins Public Library District	\$536,195.82				\$536,195.82	\$0.00	\$536,195.82
Homewood Public Library District	\$2,303,373.16				\$2,303,373.16	(\$142,625.00)	\$2,160,748.16
Indian Prairie Public Library District	\$203,144.18	\$3,202,566.81			\$3,405,710.99	\$0.00	\$3,405,710.99
Itasca Community Library		\$1,626,795.49			\$1,626,795.49	(\$206,476.00)	\$1,420,319.49
Justice Public Library District	\$311,456.09				\$311,456.09	\$0.00	\$311,456.09
Kaneville Public Library District			\$79,438.65		\$79,438.65	\$0.00	\$79,438.65

Chart 2: County Tax Payments for 2015

Library Name	Cook County Treasurer Tax Year 2015	DuPage County Treasurer Tax Year 2015	Kane County Treasurer Tax Year 2015	Will County County Treasurer Tax Year 2015	Total Tax Revenue Issued	Bond Amount (Removed)	County Total
La Grange Public Library	\$2,845,512.63				\$2,845,512.63	(\$629,450.00)	\$2,216,062.63
LaGrange Park Public Library District	\$1,763,724.29				\$1,763,724.29	\$0.00	\$1,763,724.29
Lansing Public Library	\$2,509,014.77				\$2,509,014.77	\$0.00	\$2,509,014.77
Lyons Public Library	\$680,585.63				\$680,585.63	(\$10,000.00)	\$670,585.63
Markham Public Library	\$1,031,734.33				\$1,031,734.33	(\$252,575.00)	\$779,159.33
Matteson Area Public Library District	\$2,397,929.38				\$2,397,929.38	\$0.00	\$2,397,929.38
Maywood Public Library District	\$1,281,136.74				\$1,281,136.74	\$0.00	\$1,281,136.74
McCook Public Library District	\$524,859.57				\$524,859.57	(\$164,250.00)	\$360,609.57
Melrose Park Public Library	\$981,606.11				\$981,606.11	\$0.00	\$981,606.11
Messenger Public Library of North Aurora			\$1,637,604.19		\$1,637,604.19	\$0.00	\$1,637,604.19
Midlothian Public Library	\$1,195,291.44				\$1,195,291.44	\$0.00	\$1,195,291.44
Nancy L. McConathy Public Library District	\$306,661.86			\$101.90	\$306,763.76	\$0.00	\$306,763.76
North Riverside Public Library District	\$891,648.20				\$891,648.20	\$0.00	\$891,648.20
Northlake Public Library District	\$2,394,836.28				\$2,394,836.28	(\$692,619.00)	\$1,702,217.28
Oak Brook Public Library		\$1,033,205.00			\$1,033,205.00	\$0.00	\$1,033,205.00
Oak Lawn Public Library	\$5,640,075.95				\$5,640,075.95	(\$326,150.00)	\$5,313,925.95
Oak Park Public Library	\$10,270,760.26				\$10,270,760.26	(\$3,067,594.00)	\$7,203,166.26
Palos Heights Public Library	\$1,408,250.90				\$1,408,250.90	\$0.00	\$1,408,250.90
Palos Park Public Library	\$423,124.16				\$423,124.16	\$0.00	\$423,124.16
Park Forest Public Library	\$1,659,155.84			\$371,010.76	\$2,030,166.60	\$0.00	\$2,030,166.60
Prairie Trails Public Library District	\$1,774,529.67				\$1,774,529.67	\$0.00	\$1,774,529.67
Richton Park Public Library District	\$1,333,525.90				\$1,333,525.90	(\$423,187.50)	\$910,338.40
River Forest Public Library	\$1,206,076.45				\$1,206,076.45	\$0.00	\$1,206,076.45
River Grove Public Library District	\$409,075.14				\$409,075.14	\$0.00	\$409,075.14
Riverdale Public Library District	\$507,136.50				\$507,136.50	\$0.00	\$507,136.50
Riverside Public Library	\$1,043,639.95				\$1,043,639.95	\$0.00	\$1,043,639.95
Saint Charles Public Library District		\$523,176.97	\$7,039,602.99		\$7,562,779.96	\$0.00	\$7,562,779.96
Schiller Park Public Library	\$986,512.92				\$986,512.92	\$0.00	\$986,512.92
South Holland Public Library	\$1,919,588.42				\$1,919,588.42	\$0.00	\$1,919,588.42
Steger-South Chicago Heights Public Library District	\$270,678.83			\$127,503.17	\$398,182.00	\$0.00	\$398,182.00
Stickney-Forest View Public Library District	\$1,017,993.92				\$1,017,993.92	\$0.00	\$1,017,993.92
Sugar Grove Public Library District			\$1,275,386.92		\$1,275,386.92	\$0.00	\$1,275,386.92
Summit Public Library District	\$885,163.22				\$885,163.22	\$0.00	\$885,163.22
Thomas Ford Memorial Library	\$1,278,868.82				\$1,278,868.82	\$0.00	\$1,278,868.82
Thornton Public Library	\$123,401.71				\$123,401.71	\$0.00	\$123,401.71
Tinley Park Public Library	\$4,190,736.28			\$1,335,746.07	\$5,526,482.35	(\$517,400.00)	\$5,009,082.35
Town and Country Public Library District			\$1,521,023.57		\$1,521,023.57	\$0.00	\$1,521,023.57
University Park Public Library District	\$7,458.44			\$515,795.35	\$523,253.79	\$0.00	\$523,253.79
Villa Park Public Library		\$2,027,683.51			\$2,027,683.51	\$0.00	\$2,027,683.51
West Chicago Public Library District		\$2,098,795.22			\$2,098,795.22	\$0.00	\$2,098,795.22
Westchester Public Library	\$1,216,319.96				\$1,216,319.96	\$0.00	\$1,216,319.96
Westmont Public Library		\$1,808,222.66			\$1,808,222.66	\$0.00	\$1,808,222.66
William Leonard Public Library District	\$206,034.40				\$206,034.40	\$0.00	\$206,034.40
Wood Dale Public Library District		\$2,313,932.39			\$2,313,932.39	\$0.00	\$2,313,932.39
Woodridge Public Library		\$3,361,871.22		\$247,957.00	\$3,609,828.22	\$0.00	\$3,609,828.22

Chart 2: County Tax Payments for 2015

Library Name	Cook County Treasurer Tax Year 2015	DuPage County Treasurer Tax Year 2015	Kane County Treasurer Tax Year 2015	Will County County Treasurer Tax Year 2015	Total Tax Revenue Issued	Bond Amount (Removed)	County Total
Worth Public Library District	\$757,527.41				\$757,527.41	\$0.00	\$757,527.41

Chart 3: Public Library Bond Amounts Reported

Public Library	Bond Amt for FY19 Fee Formula (2015)	Schedule Submitted?	Bond?	Annual Debt Service 2015	Annual Debt Service 2016
Acorn Public Library District	\$ 61,605	Yes	Yes	\$ 61,605.00	\$ 61,380.00
Alsip-Merrionette Park Public Library District	\$ 585,325	Yes	Yes	\$ 585,325.00	\$ 588,075.00
Batavia Public Library District	\$ 708,500	Yes	Yes	\$ 708,500.00	\$ 726,975.00
Bedford Park Public Library District	\$ -		No		
Beecher Community Library District	\$ -		No		
Bellwood Public Library	\$ -		No		
Bensenville Community Public Library District	\$ -		No		
Berkeley Public Library	\$ -		No		
Berwyn Public Library	\$ -		No		
Bloomington Public Library	\$ -		No		
Blue Island Public Library	\$ -		Unknown		
Bridgeview Public Library	\$ 254,063	Yes	Yes	\$ 254,062.50	\$ 259,112.50
Broadview Public Library District	\$ -	Yes	Yes		\$ 222,702.50
Brookfield Public Library	\$ -		No		
Calumet City Public Library	\$ 100,000	Yes	Yes	\$ 100,000.00	\$ 100,000.00
Calumet Park Public Library	\$ -		Unknown		
Carol Stream Public Library	\$ -		No		
Chicago Heights Public Library	\$ -		No		
Chicago Ridge Public Library	\$ -		No		
Cicero Public Library	\$ -		No		
Clarendon Hills Public Library	\$ -		No		
Crestwood Public Library District	\$ -		No		
Crete Public Library District	\$ -		No		
Dolton Public Library District	\$ -		No		
Downers Grove Public Library	\$ 614,076	Yes	Yes	\$ 614,076.00	\$ 623,487.00
Eisenhower Public Library District	\$ 773,805	Yes	Yes	\$ 773,805.00	\$ 748,505.00
Elmwood Park Public Library	\$ -		No		
Evergreen Park Public Library	\$ -		No		
Flossmoor Public Library	\$ -		No		

Chart 3: Public Library Bond Amounts Reported

Public Library	Bond Amt for FY19 Fee Formula (2015)	Schedule Submitted?	Bond?	Annual Debt Service 2015	Annual Debt Service 2016
Forest Park Public Library	\$ -		No		
Frankfort Public Library District	\$ -		No		
Franklin Park Public Library District	\$ -		No		
Geneva Public Library District	\$ -	Yes	Yes		
Glen Ellyn Public Library	\$ 510,328	Yes	Yes	\$ 510,328.00	\$ 508,108.00
Glenwood-Lynwood Public Library District	\$ 454,913	yes	Yes	\$ 454,912.50	\$ 454,512.50
Grande Prairie Public Library District	\$ -		No		
Harvey Public Library District	\$ -		Unknown		
Hillside Public Library	\$ -		No		
Hinsdale Public Library	\$ 80,212	Yes	Unknown	\$ 80,212.00	\$ 209,712.00
Hodgkins Public Library District	\$ -		No		
Homewood Public Library District	\$ 142,625	Yes	Yes	\$ 142,625.00	\$ 139,025.00
Indian Prairie Public Library District	\$ -		No		
Itasca Community Library	\$ 206,476	Yes	Yes	\$ 206,476.00	\$ 205,738.00
Justice Public Library District	\$ -		No		
Kaneville Public Library District	\$ -		Unknown		
La Grange Public Library	\$ 629,450	No	Yes		
LaGrange Park Public Library District	\$ -	yes	Yes		
Lansing Public Library	\$ -	Yes	Yes		
Lyons Public Library	\$ 10,000	Yes	Yes	\$ 10,000.00	\$ 10,000.00
Markham Public Library	\$ 252,575	Yes	Yes	\$ 252,575.00	\$ 257,718.75
Matteson Area Public Library District	\$ -		No		
Maywood Public Library District	\$ -		No		
McCook Public Library District	\$ 164,250	No	Yes	\$ 164,250.00	\$ 160,290.00
Melrose Park Public Library	\$ -		No		
Messenger Public Library of North Aurora	\$ -		No		
Midlothian Public Library	\$ -		No		
Nancy L. McConathy Public Library District	\$ -		No		\$ 55,543.54
North Riverside Public Library District	\$ -		No		

Chart 3: Public Library Bond Amounts Reported

Public Library	Bond Amt for FY19 Fee Formula (2015)	Schedule Submitted?	Bond?	Annual Debt Service 2015	Annual Debt Service 2016
Northlake Public Library District	\$ 692,619	No	Yes	\$ 692,619.00	\$ 845,269.00
Oak Brook Public Library	\$ -		Unknown		
Oak Lawn Public Library	\$ 326,150	Yes	Yes	\$ 326,150.00	\$ 329,400.00
Oak Park Public Library	\$ 3,067,594	Yes	Yes	\$ 3,067,594.00	\$ 2,594,238.00
Palos Heights Public Library	\$ -		No		
Palos Park Public Library	\$ -		No		
Park Forest Public Library	\$ -		No		
Prairie Trails Public Library District	\$ -		No		
Richton Park Public Library District	\$ 423,188	Yes	Yes	\$ 423,187.50	\$ 423,087.50
River Forest Public Library	\$ -		No		
River Grove Public Library District	\$ -		No		
Riverdale Public Library District	\$ -		No		
Riverside Public Library	\$ -		No		
Saint Charles Public Library District	\$ -		No		
Schiller Park Public Library	\$ -		Unknown		
South Holland Public Library	\$ -		No		
Steger-South Chicago Heights Public Library District	\$ -	Yes	Yes		\$ 8,823.66
Stickney-Forest View Public Library District	\$ -		Unknown		
Sugar Grove Public Library District	\$ -		Unknown		
Summit Public Library District	\$ -	Yes	Yes		\$ 548,985.23
Thomas Ford Memorial Library	\$ -		No		
Thornton Public Library	\$ -		No		
Tinley Park Public Library	\$ 517,400	Yes	Yes	\$ 517,400.00	\$ 522,200.00
Town and Country Public Library District	\$ -		Unknown		
University Park Public Library District	\$ -		No		
Villa Park Public Library	\$ -	Yes	Yes		
West Chicago Public Library District	\$ -		No		
Westchester Public Library	\$ -		No		
Westmont Public Library	\$ -		No		

Chart 3: Public Library Bond Amounts Reported

Public Library	Bond Amt for FY19 Fee Formula (2015)	Schedule Submitted?	Bond?	Annual Debt Service 2015	Annual Debt Service 2016
William Leonard Public Library District	\$ -		No		
Wood Dale Public Library District	\$ -		No		
Woodridge Public Library	\$ -		No		
Worth Public Library District	\$ -		No		

Chart 3: Public Library Bond Amounts Reported

Public Library	Annual Debt Service 2017	Annual Debt Service 2018	Annual Debt Service 2019	Annual Debt Service 2020
Acorn Public Library District	\$ 61,120.00	\$ 60,825.00	\$ 61,495.00	\$ 61,095.00
Alsip-Merrionette Park Public Library District	\$ 585,450.00	\$ 585,000.00	\$ 589,100.00	\$ 587,600.00
Batavia Public Library District	\$ 721,500.00	\$ 715,575.00	\$ 726,150.00	
Bedford Park Public Library District				
Beecher Community Library District				
Bellwood Public Library				
Bensenville Community Public Library District				
Berkeley Public Library				
Berwyn Public Library				
Bloomington Public Library				
Blue Island Public Library				
Bridgeview Public Library	\$ 258,462.50	\$ 258,462.50	\$ 257,450.00	\$ 259,850.00
Broadview Public Library District	\$ 271,905.00	\$ 268,305.00	\$ 269,705.00	\$ 271,005.00
Brookfield Public Library				
Calumet City Public Library	\$ 100,000.00	\$ 100,000.00	\$ 100,000.00	
Calumet Park Public Library				
Carol Stream Public Library				
Chicago Heights Public Library				
Chicago Ridge Public Library				
Cicero Public Library				
Clarendon Hills Public Library				
Crestwood Public Library District				
Crete Public Library District				
Dolton Public Library District				
Downers Grove Public Library	\$ 617,829.00			
Eisenhower Public Library District	\$ 665,899.33	\$ 667,147.00	\$ 667,187.00	\$ 668,571.00
Elmwood Park Public Library				
Evergreen Park Public Library				
Flossmoor Public Library				

Chart 3: Public Library Bond Amounts Reported

Public Library	Annual Debt Service 2017	Annual Debt Service 2018	Annual Debt Service 2019	Annual Debt Service 2020
Forest Park Public Library				
Frankfort Public Library District				
Franklin Park Public Library District				
Geneva Public Library District	\$ 1,486,330.00	\$ 651,690.00	\$ 651,340.00	\$ 650,690.00
Glen Ellyn Public Library	\$ 503,982.00			
Glenwood-Lynwood Public Library District	\$ 454,012.50	\$ 458,412.50	\$ 452,612.50	\$ 453,912.50
Grande Prairie Public Library District				
Harvey Public Library District				
Hillside Public Library				
Hinsdale Public Library	\$ 216,612.00	\$ 223,312.00	\$ 229,812.00	\$ 241,112.00
Hodgkins Public Library District				
Homewood Public Library District	\$ 140,350.00	\$ 141,395.00	\$ 142,053.75	\$ 137,396.25
Indian Prairie Public Library District				
Itasca Community Library	\$ 204,787.00	\$ 203,625.00	\$ 202,250.00	\$ 205,275.00
Justice Public Library District				
Kaneville Public Library District				
La Grange Public Library				
LaGrange Park Public Library District		\$ 12,738.00	\$ 148,600.00	\$ 149,775.00
Lansing Public Library		\$ 185,900.00	\$ 184,500.00	\$ 187,800.00
Lyons Public Library	\$ 15,000.00	\$ 15,000.00	\$ 15,000.00	\$ 15,000.00
Markham Public Library	\$ 262,600.00	\$ 267,218.75	\$ 93,150.00	\$ 93,150.00
Matteson Area Public Library District				
Maywood Public Library District				
McCook Public Library District	\$ 161,030.00	\$ 161,217.50	\$ 161,017.50	\$ 165,415.00
Melrose Park Public Library				
Messenger Public Library of North Aurora				
Midlothian Public Library				
Nancy L. McConathy Public Library District	\$ 54,772.44	\$ 54,772.44	\$ 54,772.44	\$ 527,467.40
North Riverside Public Library District				

Chart 3: Public Library Bond Amounts Reported

Public Library	Annual Debt Service 2017	Annual Debt Service 2018	Annual Debt Service 2019	Annual Debt Service 2020
Northlake Public Library District	\$ 633,600.00	\$ 643,100.00	\$ 647,200.00	\$ 689,000.00
Oak Brook Public Library				
Oak Lawn Public Library	\$ 327,400.00	\$ 330,275.00	\$ 327,900.00	\$ 328,900.00
Oak Park Public Library	\$ 1,088,804.00	\$ 1,069,345.03	\$ 1,075,733.95	\$ 1,070,807.08
Palos Heights Public Library				
Palos Park Public Library				
Park Forest Public Library				
Prairie Trails Public Library District				
Richton Park Public Library District	\$ 422,587.50	\$ 422,187.50	\$ 422,187.50	\$ 421,000.00
River Forest Public Library				
River Grove Public Library District				
Riverdale Public Library District				
Riverside Public Library				
Saint Charles Public Library District				
Schiller Park Public Library				
South Holland Public Library				
Steger-South Chicago Heights Public Library District	\$ 17,647.32	\$ 17,647.32	\$ 17,647.32	\$ 17,647.32
Stickney-Forest View Public Library District				
Sugar Grove Public Library District				
Summit Public Library District	\$ 492,790.00	\$ 499,913.50	\$ 506,771.50	\$ 508,364.00
Thomas Ford Memorial Library				
Thornton Public Library				
Tinley Park Public Library	\$ 531,000.00	\$ 533,600.00	\$ 535,200.00	\$ 510,800.00
Town and Country Public Library District				
University Park Public Library District				
Villa Park Public Library		\$ 393,400.00	\$ 387,400.00	\$ 379,400.00
West Chicago Public Library District				
Westchester Public Library				
Westmont Public Library				

Chart 3: Public Library Bond Amounts Reported

Public Library	Annual Debt Service 2017	Annual Debt Service 2018	Annual Debt Service 2019	Annual Debt Service 2020
William Leonard Public Library District				
Wood Dale Public Library District				
Woodridge Public Library				
Worth Public Library District				

Chart 3: Public Library Bond Amounts Reported

Public Library	Annual Debt Service 2021	Annual Debt Service 2022	Annual Debt Service 2023	Annual Debt Service 2024	Annual Debt Service 2025
Acorn Public Library District	\$ 60,660.00	\$ 60,980.00	\$ 61,220.00	\$ 61,380.00	\$ 61,460.00
Alsip-Merrionette Park Public Library District					
Batavia Public Library District					
Bedford Park Public Library District					
Beecher Community Library District					
Bellwood Public Library					
Bensenville Community Public Library District					
Berkeley Public Library					
Berwyn Public Library					
Bloomington Public Library					
Blue Island Public Library					
Bridgeview Public Library	\$ 256,850.00	\$ 253,650.00	\$ 255,250.00	\$ 258,650.00	\$ 256,750.00
Broadview Public Library District	\$ 266,630.00	\$ 267,455.00	\$ 267,872.50	\$ 268,172.50	\$ 272,842.50
Brookfield Public Library					
Calumet City Public Library					
Calumet Park Public Library					
Carol Stream Public Library					
Chicago Heights Public Library					
Chicago Ridge Public Library					
Cicero Public Library					
Clarendon Hills Public Library					
Crestwood Public Library District					
Crete Public Library District					
Dolton Public Library District					
Downers Grove Public Library					
Eisenhower Public Library District	\$ 670,311.00	\$ 670,671.00	\$ 672,103.00	\$ 693,519.00	\$ 669,144.00
Elmwood Park Public Library					
Evergreen Park Public Library					
Flossmoor Public Library					

Chart 3: Public Library Bond Amounts Reported

Public Library	Annual Debt Service 2021	Annual Debt Service 2022	Annual Debt Service 2023	Annual Debt Service 2024	Annual Debt Service 2025
Forest Park Public Library					
Frankfort Public Library District					
Franklin Park Public Library District					
Geneva Public Library District	\$ 649,740.00	\$ 653,490.00	\$ 649,790.00	\$ 652,490.00	\$ 655,490.00
Glen Ellyn Public Library					
Glenwood-Lynwood Public Library District	\$ 454,912.50	\$ 450,612.50	\$ 455,375.00	\$ 453,825.00	\$ 455,225.00
Grande Prairie Public Library District					
Harvey Public Library District					
Hillside Public Library					
Hinsdale Public Library	\$ 247,112.00	\$ 252,912.00	\$ 268,512.00	\$ 268,712.00	\$ 283,812.00
Hodgkins Public Library District					
Homewood Public Library District					
Indian Prairie Public Library District					
Itasca Community Library	\$ 202,850.00	\$ 205,200.00	\$ 202,100.00	\$ 203,775.00	
Justice Public Library District					
Kaneville Public Library District					
La Grange Public Library					
LaGrange Park Public Library District	\$ 155,725.00	\$ 151,525.00	\$ 147,150.00	\$ 152,438.00	
Lansing Public Library	\$ 185,900.00	\$ 183,700.00			
Lyons Public Library	\$ 15,000.00	\$ 15,000.00	\$ 15,000.00	\$ 15,000.00	\$ 20,000.00
Markham Public Library	\$ 93,150.00	\$ 93,150.00	\$ 1,320,075.00	\$ 27,000.00	\$ 613,500.00
Matteson Area Public Library District					
Maywood Public Library District					
McCook Public Library District	\$ 164,035.00	\$ 162,285.00			
Melrose Park Public Library					
Messenger Public Library of North Aurora					
Midlothian Public Library					
Nancy L. McConathy Public Library District					
North Riverside Public Library District					

Chart 3: Public Library Bond Amounts Reported

Public Library	Annual Debt Service 2021	Annual Debt Service 2022	Annual Debt Service 2023	Annual Debt Service 2024	Annual Debt Service 2025
Northlake Public Library District	\$ 691,750.00	\$ 685,900.00	\$ 2,155,525.00		
Oak Brook Public Library					
Oak Lawn Public Library	\$ 329,600.00				
Oak Park Public Library					
Palos Heights Public Library					
Palos Park Public Library					
Park Forest Public Library					
Prairie Trails Public Library District					
Richton Park Public Library District	\$ 419,000.00	\$ 421,162.50	\$ 423,050.00	\$ 418,900.00	\$ 419,600.00
River Forest Public Library					
River Grove Public Library District					
Riverdale Public Library District					
Riverside Public Library					
Saint Charles Public Library District					
Schiller Park Public Library					
South Holland Public Library					
Steger-South Chicago Heights Public Library District	\$ 116,200.68				
Stickney-Forest View Public Library District					
Sugar Grove Public Library District					
Summit Public Library District	\$ 539,779.50	\$ 315,487.00			
Thomas Ford Memorial Library					
Thornton Public Library					
Tinley Park Public Library	\$ 536,400.00				
Town and Country Public Library District					
University Park Public Library District					
Villa Park Public Library	\$ 386,400.00	\$ 387,800.00	\$ 383,800.00	\$ 384,600.00	\$ 385,000.00
West Chicago Public Library District					
Westchester Public Library					
Westmont Public Library					

Chart 3: Public Library Bond Amounts Reported

Public Library	Annual Debt Service 2021	Annual Debt Service 2022	Annual Debt Service 2023	Annual Debt Service 2024	Annual Debt Service 2025
William Leonard Public Library District					
Wood Dale Public Library District					
Woodridge Public Library					
Worth Public Library District					

Chart 3: Public Library Bond Amounts Reported

Public Library	Annual Debt Service 2026	Annual Debt Service 2027	Annual Debt Service 2028	Annual Debt Service 2029	Annual Debt Service 2030
Acorn Public Library District	\$ 61,460.00	\$ 61,224.00	\$ 60,902.00	\$ 59,247.00	
Alsip-Merrionette Park Public Library District					
Batavia Public Library District					
Bedford Park Public Library District					
Beecher Community Library District					
Bellwood Public Library					
Bensenville Community Public Library District					
Berkeley Public Library					
Berwyn Public Library					
Bloomington Public Library					
Blue Island Public Library					
Bridgeview Public Library	\$ 254,700.00	\$ 257,500.00			
Broadview Public Library District	\$ 272,252.50	\$ 270,652.50	\$ 268,902.50	\$ 271,772.50	\$ 269,332.50
Brookfield Public Library					
Calumet City Public Library					
Calumet Park Public Library					
Carol Stream Public Library					
Chicago Heights Public Library					
Chicago Ridge Public Library					
Cicero Public Library					
Clarendon Hills Public Library					
Crestwood Public Library District					
Crete Public Library District					
Dolton Public Library District					
Downers Grove Public Library					
Eisenhower Public Library District	\$ 667,968.00	\$ 671,616.00			
Elmwood Park Public Library					
Evergreen Park Public Library					
Flossmoor Public Library					

Chart 3: Public Library Bond Amounts Reported

Public Library	Annual Debt Service 2026	Annual Debt Service 2027	Annual Debt Service 2028	Annual Debt Service 2029	Annual Debt Service 2030
Forest Park Public Library					
Frankfort Public Library District					
Franklin Park Public Library District					
Geneva Public Library District	\$ 657,690.00	\$ 654,090.00	\$ 654,890.00	\$ 654,890.00	\$ 659,090.00
Glen Ellyn Public Library					
Glenwood-Lynwood Public Library District	\$ 451,025.00	\$ 456,425.00	\$ 451,025.00	\$ 453,250.00	\$ 454,575.00
Grande Prairie Public Library District					
Harvey Public Library District					
Hillside Public Library					
Hinsdale Public Library	\$ 293,114.00	\$ 296,816.00			
Hodgkins Public Library District					
Homewood Public Library District					
Indian Prairie Public Library District					
Itasca Community Library					
Justice Public Library District					
Kaneville Public Library District					
La Grange Public Library					
LaGrange Park Public Library District					
Lansing Public Library					
Lyons Public Library	\$ 20,000.00	\$ 20,000.00	\$ 20,000.00		
Markham Public Library					
Matteson Area Public Library District					
Maywood Public Library District					
McCook Public Library District					
Melrose Park Public Library					
Messenger Public Library of North Aurora					
Midlothian Public Library					
Nancy L. McConathy Public Library District					
North Riverside Public Library District					

Chart 3: Public Library Bond Amounts Reported

Public Library	Annual Debt Service 2026	Annual Debt Service 2027	Annual Debt Service 2028	Annual Debt Service 2029	Annual Debt Service 2030
Northlake Public Library District					
Oak Brook Public Library					
Oak Lawn Public Library					
Oak Park Public Library					
Palos Heights Public Library					
Palos Park Public Library					
Park Forest Public Library					
Prairie Trails Public Library District					
Richton Park Public Library District	\$ 423,400.00	\$ 420,000.00	\$ 421,200.00	\$ 421,800.00	\$ 421,800.00
River Forest Public Library					
River Grove Public Library District					
Riverdale Public Library District					
Riverside Public Library					
Saint Charles Public Library District					
Schiller Park Public Library					
South Holland Public Library					
Steger-South Chicago Heights Public Library District					
Stickney-Forest View Public Library District					
Sugar Grove Public Library District					
Summit Public Library District					
Thomas Ford Memorial Library					
Thornton Public Library					
Tinley Park Public Library					
Town and Country Public Library District					
University Park Public Library District					
Villa Park Public Library	\$ 385,000.00	\$ 384,600.00	\$ 383,800.00	\$ 387,600.00	\$ 385,800.00
West Chicago Public Library District					
Westchester Public Library					
Westmont Public Library					

Chart 3: Public Library Bond Amounts Reported

Public Library	Annual Debt Service 2026	Annual Debt Service 2027	Annual Debt Service 2028	Annual Debt Service 2029	Annual Debt Service 2030
William Leonard Public Library District					
Wood Dale Public Library District					
Woodridge Public Library					
Worth Public Library District					

Chart 3: Public Library Bond Amounts Reported

Public Library	Annual Debt Service 2031	Annual Debt Service 2032	Annual Debt Service 2033	Annual Debt Service 2034	Annual Debt Service 2035
Acorn Public Library District					
Alsip-Merrionette Park Public Library District					
Batavia Public Library District					
Bedford Park Public Library District					
Beecher Community Library District					
Bellwood Public Library					
Bensenville Community Public Library District					
Berkeley Public Library					
Berwyn Public Library					
Bloomington Public Library					
Blue Island Public Library					
Bridgeview Public Library					
Broadview Public Library District	\$ 271,737.50	\$ 268,450.00			
Brookfield Public Library					
Calumet City Public Library					
Calumet Park Public Library					
Carol Stream Public Library					
Chicago Heights Public Library					
Chicago Ridge Public Library					
Cicero Public Library					
Clarendon Hills Public Library					
Crestwood Public Library District					
Crete Public Library District					
Dolton Public Library District					
Downers Grove Public Library					
Eisenhower Public Library District					
Elmwood Park Public Library					
Evergreen Park Public Library					
Flossmoor Public Library					

Chart 3: Public Library Bond Amounts Reported

Public Library	Annual Debt Service 2031	Annual Debt Service 2032	Annual Debt Service 2033	Annual Debt Service 2034	Annual Debt Service 2035
Forest Park Public Library					
Frankfort Public Library District					
Franklin Park Public Library District					
Geneva Public Library District	\$ 657,290.00	\$ 654,690.00	\$ 659,800.00	\$ 660,400.00	\$ -
Glen Ellyn Public Library					
Glenwood-Lynwood Public Library District					
Grande Prairie Public Library District					
Harvey Public Library District					
Hillside Public Library					
Hinsdale Public Library					
Hodgkins Public Library District					
Homewood Public Library District					
Indian Prairie Public Library District					
Itasca Community Library					
Justice Public Library District					
Kaneville Public Library District					
La Grange Public Library					
LaGrange Park Public Library District					
Lansing Public Library					
Lyons Public Library					
Markham Public Library					
Matteson Area Public Library District					
Maywood Public Library District					
McCook Public Library District					
Melrose Park Public Library					
Messenger Public Library of North Aurora					
Midlothian Public Library					
Nancy L. McConathy Public Library District					
North Riverside Public Library District					

Chart 3: Public Library Bond Amounts Reported

Public Library	Annual Debt Service 2031	Annual Debt Service 2032	Annual Debt Service 2033	Annual Debt Service 2034	Annual Debt Service 2035
Northlake Public Library District					
Oak Brook Public Library					
Oak Lawn Public Library					
Oak Park Public Library					
Palos Heights Public Library					
Palos Park Public Library					
Park Forest Public Library					
Prairie Trails Public Library District					
Richton Park Public Library District	\$ 421,200.00				
River Forest Public Library					
River Grove Public Library District					
Riverdale Public Library District					
Riverside Public Library					
Saint Charles Public Library District					
Schiller Park Public Library					
South Holland Public Library					
Steger-South Chicago Heights Public Library District					
Stickney-Forest View Public Library District					
Sugar Grove Public Library District					
Summit Public Library District					
Thomas Ford Memorial Library					
Thornton Public Library					
Tinley Park Public Library					
Town and Country Public Library District					
University Park Public Library District					
Villa Park Public Library	\$ 383,600.00	\$ 386,000.00	\$ 387,800.00	\$ 38,400.00	\$ 384,800.00
West Chicago Public Library District					
Westchester Public Library					
Westmont Public Library					

Chart 3: Public Library Bond Amounts Reported

Public Library	Annual Debt Service 2031	Annual Debt Service 2032	Annual Debt Service 2033	Annual Debt Service 2034	Annual Debt Service 2035
William Leonard Public Library District					
Wood Dale Public Library District					
Woodridge Public Library					
Worth Public Library District					

eRead Illinois for SWAN Libraries

eRead Illinois is an e-book platform using Baker & Taylor Axis 360. SWAN libraries use the service, and integration with the Enterprise catalog does not require any additional costs. Information about eRead Illinois can be found online at the ereadillinois.com website.

As part of the grant funding for the New 19, RAILS has requested SWAN “incorporate a discussion about eRead Illinois into the project, as both LINC and MAGIC currently have group contracts that take advantage of the 30% rebate for 100% consortial participation.”

RAILS requires 100% of the consortia libraries to participate in order to receive the 30% discount.

Total SWAN Consortium eRead Membership			\$129,959
RAILS 30% Discount for Membership			\$(38,988)
eRead Cost w/ 30% Discount			\$90,971
eRead Cost			\$75,517
SWAN Libraries Participating in eRead			51
SWAN Libraries not in eRead			46

I have put together a cost chart for discussion at the February 6, 2018 Committee of the Whole meeting. The cost scenarios in the following chart include eRead Illinois pricing:

- Without the discount (see “eRead IL Fee Solo Cost” column)
- With the 30% discount (see “eRead Group Discount at 30% Requires 100% Participation” column)
- SWAN FY19 Membership Fee if 100% participation were agreed upon, and the \$90,971 eRead expense were part of SWAN’s FY19 budget (see “FY19 SWAN Fee with eRead Group Purchase” column)

The New 19 libraries participating in eRead will be transitioned to SWAN automatically as part of the migration plan. Libraries that join eRead or discontinue their membership in the e-book platform should contact RAILS at ereadillinois@railslibraries.info

The SWAN Board and I look forward to the discussion February 6th.

Aaron Skog

SWAN Executive Director

Library Name	Group	eRead IL Fee Solo Cost	Currently in eRead	eRead Group Discount at 30% (Requires 100% Participation)	Savings with Group Discount	FY19 SWAN Fee	FY19 SWAN Fee with eRead Group Purchase	FY19 Fee Increase with eRead Group Purchase	Difference Between eRead Solo Cost vs
									Group Purchase included in SWAN Fees
Acorn Public Library District	SWAN Public	\$1,324	no	\$927	\$397	\$20,633	\$21,424	\$791	\$791
Alsip-Merrionette Park Library District	SWAN Public	\$1,814	no	\$1,270	\$544	\$33,488	\$34,653	\$1,165	\$1,165
Batavia Public Library District	LINC Public	\$2,396	yes	\$1,677	\$719	\$44,444	\$45,928	\$1,484	(\$912)
Bedford Park Public Library District	SWAN Public	\$250	no	\$175	\$75	\$23,050	\$23,911	\$861	\$861
Beecher Community Library	SWAN Public	\$509	no	\$356	\$153	\$13,538	\$14,122	\$584	\$584
Bellwood Public Library	SWAN Public	\$946	no	\$662	\$284	\$27,972	\$28,977	\$1,005	\$1,005
Bensenville Community Public Library District	MAGIC Public	\$1,008	yes	\$706	\$303	\$25,516	\$26,449	\$933	(\$75)
Bensenville Elementary School District #2	MAGIC School	\$453	yes	\$317	\$136	\$17,500	\$17,500	\$0	(\$453)
Berkeley Public Library	SWAN Public	\$551	no	\$386	\$165	\$14,301	\$14,908	\$606	\$606
Berwyn Public Library	SWAN Public	\$2,183	yes	\$1,528	\$655	\$43,669	\$45,131	\$1,462	(\$721)
Bloomington Public Library	LINC Public	\$2,131	yes	\$1,491	\$639	\$38,703	\$40,020	\$1,317	(\$813)
Blue Island Public Library	SWAN Public	\$1,129	no	\$790	\$339	\$21,535	\$22,353	\$817	\$817
Bridgeview Public Library	SWAN Public	\$1,225	no	\$858	\$368	\$21,020	\$21,822	\$802	\$802
Broadview Public Library District	SWAN Public	\$659	no	\$462	\$198	\$23,506	\$24,381	\$874	\$874
Brookfield Free Public Library	SWAN Public	\$1,423	yes	\$996	\$427	\$32,179	\$33,306	\$1,127	(\$296)
Brookfield Zoo	SWAN Special	\$0	no	\$0	\$0	\$0	\$0	\$0	\$0
Calumet City Public Library	SWAN Public	\$2,182	no	\$1,527	\$654	\$26,292	\$27,247	\$956	\$956
Calumet Park Public Library	SWAN Public	\$519	no	\$364	\$156	\$12,293	\$12,841	\$548	\$548
Carol Stream Public Library	MAGIC Public	\$2,699	yes	\$1,890	\$810	\$45,269	\$46,778	\$1,509	(\$1,191)
Chicago Heights Free Public Library	SWAN Public	\$1,239	no	\$868	\$372	\$19,455	\$20,212	\$756	\$756
Chicago Ridge Public Library	SWAN Public	\$1,098	yes	\$769	\$330	\$24,976	\$25,894	\$917	(\$181)
Cicero Public Library	SWAN Public	\$2,020	yes	\$1,414	\$606	\$30,805	\$31,892	\$1,087	(\$933)
Clarendon Hills Public Library	SWAN Public	\$823	yes	\$576	\$247	\$17,652	\$18,356	\$704	(\$119)
Crestwood Public Library District	SWAN Public	\$682	yes	\$477	\$205	\$15,731	\$16,379	\$648	(\$34)
Crete Public Library District	SWAN Public	\$1,255	yes	\$878	\$376	\$27,752	\$28,750	\$998	(\$257)
Dolton Public Library District	SWAN Public	\$910	no	\$637	\$273	\$22,185	\$23,021	\$836	\$836
Downers Grove Public Library	SWAN Public	\$3,687	no	\$2,581	\$1,106	\$56,380	\$58,212	\$1,832	\$1,832
Eisenhower Public Library District	SWAN Public	\$2,145	no	\$1,502	\$644	\$43,278	\$44,729	\$1,451	\$1,451
Elmwood Park Public Library	SWAN Public	\$1,361	yes	\$953	\$408	\$25,671	\$26,608	\$938	(\$423)
Evergreen Park Public Library	SWAN Public	\$1,150	no	\$805	\$345	\$21,375	\$22,188	\$812	\$812
Flossmoor Public Library	SWAN Public	\$1,027	no	\$719	\$308	\$23,242	\$24,109	\$867	\$867
Forest Park Public Library	SWAN Public	\$1,516	no	\$1,061	\$455	\$27,857	\$28,858	\$1,001	\$1,001
Frankfort Public Library District	SWAN Public	\$1,984	yes	\$1,389	\$595	\$32,186	\$33,314	\$1,127	(\$857)
Franklin Park Public Library District	SWAN Public	\$1,219	yes	\$853	\$366	\$27,185	\$28,167	\$982	(\$237)
Geneva Public Library District	LINC Public	\$2,720	yes	\$1,904	\$816	\$57,172	\$59,027	\$1,855	(\$864)
Glen Ellyn Public Library	LINC Public	\$2,790	yes	\$1,953	\$837	\$49,830	\$51,471	\$1,641	(\$1,148)
Glenwood-Lynwood Public Library District	SWAN Public	\$1,057	no	\$740	\$317	\$20,721	\$21,514	\$793	\$793
Grande Prairie Public Library District	SWAN Public	\$1,210	yes	\$847	\$363	\$24,913	\$25,828	\$915	(\$295)
Harvey Public Library District	SWAN Public	\$1,298	no	\$908	\$389	\$19,266	\$20,016	\$751	\$751

Library Name	Group		eRead IL Fee Solo Cost	Currently in eRead	eRead Group Discount at		FY19 SWAN Fee	FY19 SWAN		Difference Between eRead Solo Cost vs Group Purchase included in SWAN Fees
					30% (Requires 100% Participation)	Savings with Group Discount		Fee with eRead Group Purchase	FY19 Fee Increase with eRead Group Purchase	
Hillside Public Library	SWAN	Public	\$849	no	\$594	\$255	\$21,375	\$22,187	\$812	\$812
Hinsdale Public Library	SWAN	Public	\$1,634	yes	\$1,144	\$490	\$38,560	\$39,873	\$1,313	(\$321)
Hodgkins Public Library District	SWAN	Public	\$671	yes	\$469	\$201	\$15,992	\$16,648	\$656	(\$15)
Homewood Public Library District	SWAN	Public	\$1,639	no	\$1,148	\$492	\$32,189	\$33,317	\$1,127	\$1,127
Indian Prairie Public Library District	SWAN	Public	\$3,004	yes	\$2,103	\$901	\$44,602	\$46,091	\$1,489	(\$1,515)
Itasca Community Library	LINC	Public	\$846	yes	\$592	\$254	\$24,807	\$25,720	\$912	\$66
Justice Public Library District	SWAN	Public	\$723	yes	\$506	\$217	\$13,752	\$14,342	\$590	(\$132)
Kaneville Public Library District	MAGIC	Public	\$392	yes	\$274	\$118	\$11,438	\$11,961	\$523	\$131
La Grange Public Library	SWAN	Public	\$1,664	no	\$1,165	\$499	\$32,741	\$33,884	\$1,144	\$1,144
LaGrange Park Public Library District	SWAN	Public	\$1,117	yes	\$782	\$335	\$28,231	\$29,243	\$1,012	(\$105)
Lansing Public Library	SWAN	Public	\$1,360	yes	\$952	\$408	\$35,662	\$36,890	\$1,229	(\$131)
Lyons Public Library	SWAN	Public	\$924	no	\$647	\$277	\$17,332	\$18,027	\$695	\$695
Markham Public Library	SWAN	Public	\$815	no	\$571	\$245	\$18,415	\$19,141	\$726	\$726
Matteson Public Library	SWAN	Public	\$1,680	no	\$1,176	\$504	\$34,554	\$35,750	\$1,196	\$1,196
Maywood Public Library District	SWAN	Public	\$846	yes	\$592	\$254	\$23,419	\$24,291	\$872	\$872
McCook Public Library District	SWAN	Public	\$250	yes	\$175	\$75	\$14,242	\$14,846	\$605	\$355
Melrose Park Public Library	SWAN	Public	\$872	no	\$611	\$262	\$20,433	\$21,218	\$785	\$785
Messenger Public Library of North Aurora	MAGIC	Public	\$1,441	yes	\$1,009	\$432	\$26,973	\$27,949	\$976	(\$465)
Midlothian Public Library	SWAN	Public	\$1,109	no	\$776	\$333	\$22,564	\$23,411	\$847	\$847
Morton Arboretum	SWAN	Special	\$0	no	\$0	\$0	\$12,500	\$12,500	\$0	\$0
Nancy L McConathy Public Library District	SWAN	Public	\$546	yes	\$382	\$164	\$13,705	\$14,294	\$589	\$43
National University of Health Science	MAGIC	Academic	\$910	yes	\$637	\$273	\$14,333	\$14,333	\$0	(\$910)
North Riverside Public Library District	SWAN	Public	\$745	no	\$521	\$223	\$19,536	\$20,295	\$759	\$759
Northlake Public Library District	SWAN	Public	\$931	no	\$652	\$279	\$27,618	\$28,612	\$994	\$994
Oak Brook Public Library	MAGIC	Public	\$1,027	yes	\$719	\$308	\$20,948	\$21,747	\$800	(\$227)
Oak Lawn Public Library	SWAN	Public	\$3,936	no	\$2,755	\$1,181	\$63,627	\$65,670	\$2,043	\$2,043
Oak Park Public Library	SWAN	Public	\$5,192	yes	\$3,634	\$1,558	\$82,463	\$85,055	\$2,592	(\$2,600)
Palos Heights Public Library	SWAN	Public	\$1,428	yes	\$1,000	\$428	\$24,687	\$25,596	\$909	(\$519)
Palos Park Public Library	SWAN	Public	\$678	yes	\$474	\$203	\$14,865	\$15,488	\$623	(\$55)
Park Forest Public Library	SWAN	Public	\$1,737	no	\$1,216	\$521	\$30,887	\$31,977	\$1,090	\$1,090
Prairie State College	SWAN	Academic	\$0	no	\$0	\$0	\$18,667	\$18,667	\$0	\$0
Prairie Trails Public Library District	SWAN	Public	\$1,647	yes	\$1,153	\$494	\$28,339	\$29,354	\$1,015	(\$631)
Richton Park Public Library District	SWAN	Public	\$932	no	\$652	\$280	\$19,723	\$20,487	\$764	\$764
River Forest Public Library	SWAN	Public	\$1,212	no	\$848	\$363	\$22,671	\$23,521	\$850	\$850
River Grove Public Library District	SWAN	Public	\$993	no	\$695	\$298	\$14,725	\$15,343	\$619	\$619
Riverdale Public Library District	SWAN	Public	\$612	no	\$429	\$184	\$15,703	\$16,350	\$647	\$647
Riverside Public Library	SWAN	Public	\$782	yes	\$548	\$235	\$21,052	\$21,855	\$803	\$21
Saint Charles Public Library District	LINC	Public	\$7,132	yes	\$4,992	\$2,140	\$86,049	\$88,745	\$2,697	(\$4,436)
Schiller Park Public Library	SWAN	Public	\$904	yes	\$633	\$271	\$20,482	\$21,268	\$786	(\$118)

Library Name	Group	eRead IL Fee Solo Cost	Currently in eRead	eRead Group Discount at 30% (Requires 100% Participation)	Savings with Group Discount	FY19 SWAN Fee	FY19 SWAN Fee with eRead Group Purchase	FY19 Fee Increase with eRead Group Purchase	Difference Between eRead Solo Cost vs Group Purchase included in SWAN Fees
South Holland Public Library	SWAN Public	\$1,397	yes	\$978	\$419	\$29,785	\$30,842	\$1,057	(\$339)
Steger-South Chicago Heights Public Library District	SWAN Public	\$662	no	\$463	\$199	\$14,616	\$15,232	\$615	\$615
Stickney-Forest View Public Library District	SWAN Public	\$870	no	\$609	\$261	\$20,796	\$21,591	\$796	\$796
Sugar Grove Public Library District	MAGIC Public	\$941	yes	\$659	\$282	\$23,362	\$24,232	\$870	(\$71)
Summit Public Library District	SWAN Public	\$485	no	\$339	\$145	\$19,472	\$20,228	\$757	\$757
Theosophical Society in America	MAGIC Special	\$375	yes	\$263	\$113	\$12,500	\$12,500	\$0	(\$375)
Thomas Ford Memorial Library	SWAN Public	\$1,113	yes	\$779	\$334	\$23,397	\$24,268	\$871	(\$242)
Thornton Public Library	SWAN Public	\$399	yes	\$279	\$120	\$11,877	\$12,412	\$536	\$137
Tinley Park Public Library	SWAN Public	\$3,276	no	\$2,294	\$983	\$60,588	\$62,543	\$1,955	\$1,955
Town and Country Public Library District	MAGIC Public	\$1,150	yes	\$805	\$345	\$25,811	\$26,753	\$942	(\$208)
University Park Public Library District	SWAN Public	\$461	no	\$323	\$138	\$15,863	\$16,515	\$652	\$652
Villa Park Public Library	LINC Public	\$1,694	yes	\$1,186	\$508	\$30,863	\$31,951	\$1,089	(\$605)
West Chicago Public Library District	LINC Public	\$1,361	yes	\$953	\$408	\$31,572	\$32,681	\$1,109	(\$252)
Westchester Public Library	SWAN Public	\$995	yes	\$697	\$299	\$22,773	\$23,626	\$853	(\$142)
Westmont Public Library	SWAN Public	\$1,683	no	\$1,178	\$505	\$28,675	\$29,700	\$1,025	\$1,025
William Leonard Public Library District	SWAN Public	\$372	no	\$261	\$112	\$12,700	\$13,260	\$560	\$560
Wood Dale Public Library District	MAGIC Public	\$1,465	yes	\$1,026	\$440	\$33,717	\$34,889	\$1,172	(\$293)
Woodridge Public Library	SWAN Public	\$2,591	yes	\$1,814	\$777	\$46,637	\$48,185	\$1,548	(\$1,043)
Worth Public Library District	SWAN Public	\$898	yes	\$629	\$270	\$18,199	\$18,919	\$720	(\$179)
		\$ 129,959		\$ 90,971	\$ 38,988	\$ 2,605,598	\$ 2,696,569	\$ 90,971	
Total SWAN Consortium eRead Membership		\$ 129,959							
RAILS 30% Discount for Membership		\$ (38,988)							
eRead Cost w/ 30% Discount		\$ 90,971							
Current eRead Total Cost		\$ 75,517							
SWAN Libraries Participating in eRead		\$ 51							
SWAN Libraries not in eRead		\$ 46							