



SWAN Committee of the Whole Meeting Administrators & Directors

Tuesday, February 9, 2021

10:00 a.m. – 12:00 p.m.

Per Illinois Public Act 101-0640, this meeting will be held by remote attendance

GoToWebinar Registration link:

<https://attendee.gotowebinar.com/register/5535146455203225101>

After registering, you will receive a confirmation email containing information about joining the webinar.

Agenda

1. Call to Order
2. Introduction of Visitors
3. Discussion – Proposed SWAN Fiscal Year 2022 budget, membership fees, and reserves
4. Next Membership Meeting: SWAN Quarterly March 4, 2021
5. Adjourn

Please note: this meeting will be records and posted on the SWAN Support site

SWAN Budget Information & Guidelines

Fiscal Year 2022 (July 1, 2021 – June 30, 2022)

February 9, 2021 Committee of the Whole Meeting Draft

Introduction

Revenue & Expense, Reserves, & Membership Fees

The SWAN budget is introduced to the SWAN Board at its November meeting, with scheduled input from library directors at a February Committee of the Whole meeting, and concluding with a membership approval at the March SWAN Quarterly meeting.

New Budget Lines

This year we added expense line #5920 "Reimbursement for Resource Sharing" to record any of the expenses which occur within SWAN's centralized billing for unreturned materials between libraries.

Budget Highlights

Reduced Expenses

The FY22 budget reduced expenses and froze various budget lines in an effort to reflect the changing services brought upon SWAN by the global pandemic. The total expenses in SWAN increased only 0.9% with the FY22 budget, while adding some new features for libraries.

Three New Libraries

The libraries Glenside, Roselle, and Warrenville bring in additional revenue through membership fees. The associated expenses with adding on libraries do not exceed the new revenue, bringing \$52,200 in net revenue to SWAN.

Reduced Revenue: Money Market Interest & RAILS Grant Funding

RAILS reduced SWAN's state funding by \$39,327 to a total of \$522,691. Combined with the loss of interest revenue from the Money Market account, a total of \$74,327 revenue loss needed to be generated in an increase to membership fees at an overall rate of 2.8%.

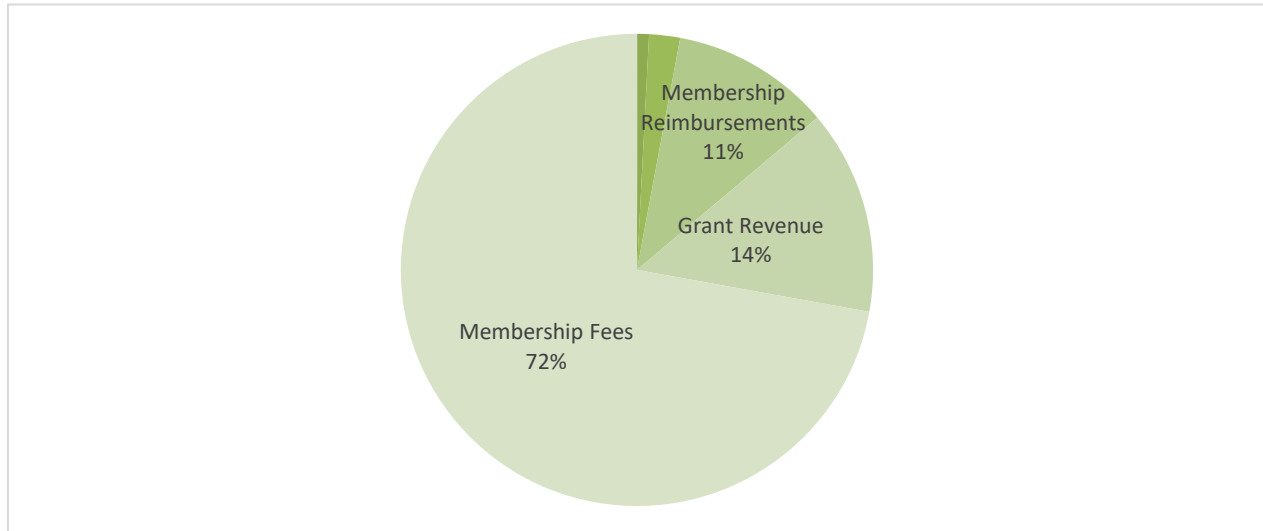
New: Aspen Discovery

Pending the affirmation of member libraries, the Aspen Discovery catalog will run concurrently with Enterprise for this budget year. The support expense will be taken from reserves, see revenue line #4600 and expense line #5440. You can read more about SWAN's Aspen Discovery on the support site at <https://support.swanlibraries.net/aspen>

New: KitKeeper, & Book Club Kits

KitKeeper is an online subscription through Plymouth Rocket that will help member libraries better manage bookclub kits. KitKeeper will be managed as a group-purchase for participating member libraries at \$25 per library. This budget funds at \$5,000 a pilot to create shared book club kits that can be requested by participating libraries in the book club kit pilot.

Revenue



Membership Fees

4010	SWAN Full Membership Fees	\$2,917,863
-------------	----------------------------------	--------------------

SWAN assesses membership fees based on academic, school, special, and public library. The formulas used for each are detailed on the SWAN support site under About > Board > Budget & Fees. FY21 membership fee revenue on average does not increase. There are exceptions however, based on the formula, particularly for public libraries undergoing property tax or debt service changes within a given year. SWAN's FY21 membership fees are based on the 2017 tax year.

4011	SWAN Internet Access Membership Fees	\$3,700
-------------	---	----------------

The Internet Access level service for school libraries continues through this fiscal year with 10 schools participating with partner SWAN member public libraries.

Membership Reimbursements

4110	Member One-Time Project Receipts	\$0
-------------	---	------------

This budget line would be used if a library needed to reimburse SWAN for one-time expenses incurred. For example, if the RAILS Catalog Grant were no longer available, a library joining SWAN would pay SWAN for the one-time expenses for the vendor expenses. No one-time projects are anticipated for the FY22 budget.

4190	Member Group Purchase Receipts	\$463,984
-------------	---------------------------------------	------------------

Libraries that reimburse SWAN for group purchases are indicated in this budget line. EBSCO database group-purchase revenue collected from public libraries is \$420,000 for year 2. Additional group purchases are ongoing with renewals with Envisionware for self-check software.

Reimbursement for Losses

4220	Reimbursement Losses for Resource Sharing	\$30,000
-------------	--	-----------------

Revenue associated with reimbursement for ILL or reciprocal borrowing with libraries outside of the SWAN consortium, e.g. Chicago Public Library.

4230	Collection Agency Fees	\$900
-------------	-------------------------------	--------------

SWAN will collect a modest fee for administering services within the Unique Management collection of unpaid reciprocal borrower invoices.

Grant Revenue

4310	RAILS Support to SWAN	\$522,691
-------------	------------------------------	------------------

RAILS provides support to SWAN through an annual grant to support regional resource sharing. The grant amount for FY22 to SWAN is divided equally between all public libraries and is indicated as a discount off SWAN membership fees.

4320	Other Grant Revenue	\$0
-------------	----------------------------	------------

The one-time grant revenue from adding new libraries would be recorded in this line. No new libraries are planned in this budget year, as SWAN now adds new member libraries every other year.

Registration & Event Receipts

4499	Annual Conference Receipts	\$0
------	----------------------------	-----

Any revenue collected as part of the SWAN Expo are recorded in this budget line. This includes vendor table fees or libraries invoices for the event to offset event catering. The FY22 budget does not plan for an annual conference.

Investment & Interest

4510	Interest Income	\$2,000
------	-----------------	---------

SWAN interest income fell mid-way through last year's budget.

4520	Investment Income	\$0
------	-------------------	-----

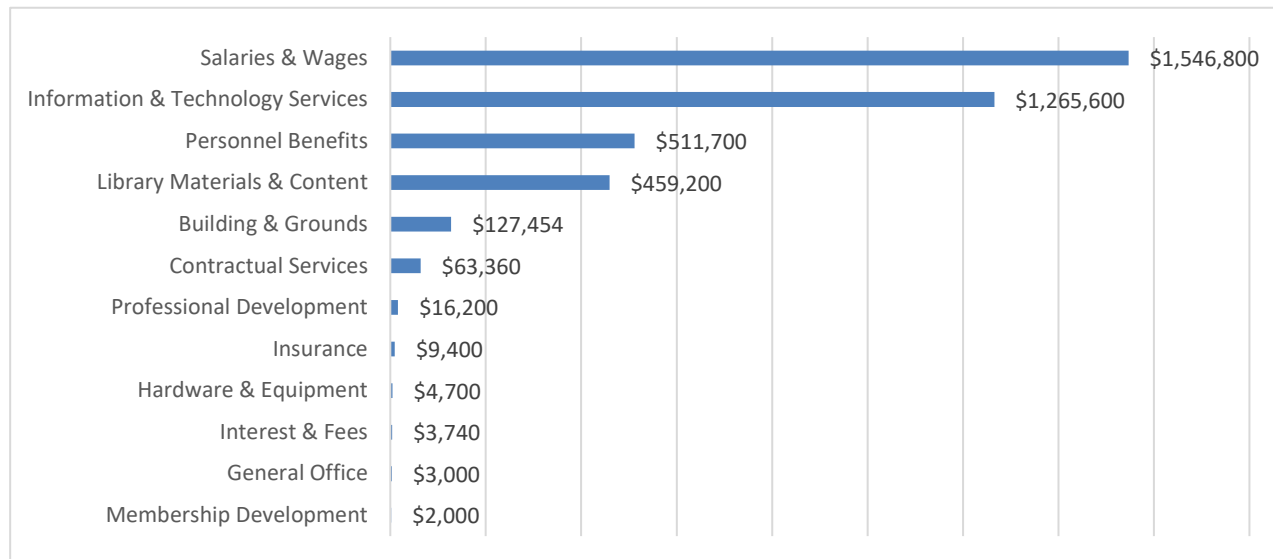
SWAN currently does not invest reserve funds. Should the organization decide to invest, the annual income would be recorded in this budget revenue line.

Reserve Fund Transfer

4600	Reserve Fund Transfer	\$90,000
------	-----------------------	----------

Aspen Discovery support with ByWater Solutions will be taken from reserves. See the expense line 5440 Library Services Platform for its one-time expense increase for FY22.

Expenses



Salaries & Wages

5000 Salaries & Wages \$1,546,800

SWAN has left positions unfilled and eliminated a position to remain flexible within the strategic plan. The FY21 budget has no increases from the prior year's budget. There is one proposed position that is on hold that this budget could support.

Personnel Benefits

5021 Social Security Taxes \$118,400

Payroll taxes and fringe benefits-- employer's share only. Social Security taxes (FICA). No change from the prior budget.

5022 State Unemployment Insurance -

Organization pays unemployment directly should it be required.

5023 Worker's Compensation \$3,000

Organization insurance provided by insurance vendor.

5024 Retirement Benefits \$140,900

SWAN provides its employees a 401a retirement plan through ICMA-RC. The organization does not provide a defined benefit plan or participate in Illinois Municipal Retirement Fund (IMRF).

5025 Health, Dental, Life And Disability Insurance \$234,600

Employee health insurance is provided by LIMRiCC Purchase of Health Insurance Program (PHIP). The FY22 rates from LIMRiCC are lower based on the switch from BlueCross BlueShield to Aetna.

5026	Tuition Reimbursements	\$2,500
-------------	-------------------------------	----------------

Tuition reimbursement benefit for employees.

5085	Staff Wellness	\$600
-------------	-----------------------	--------------

Benefit offered to SWAN employees for participation within the employee Wellness Plan which includes incentives for breaktimes for walking, pedometers, exercise, and healthy lifestyles. No change from the prior budget.

Building & Grounds

SWAN headquarters located at 800 Quail Ridge Drive in Westmont, Illinois includes expenses for the lease and operations of the headquarters.

5110	Rent/Lease	\$110,104
-------------	-------------------	------------------

SWAN signed a 7-year lease in 2016 for office space. The rent escalation is included for this year's budget, along with the anticipated shared operating expenses and property taxes for FY22. Refer to SWAN's FY20 audit for the full debt obligation of the office lease.

5120	Utilities	\$5,700
-------------	------------------	----------------

Facility electricity and natural gas expenses are recorded in this line. Based on 6 months of actual expenses in 2020, this expense is lower for the FY22 budget.

5130	Property Insurance	\$0
-------------	---------------------------	------------

Property and flood insurance covers office space furniture and equipment, and the RAILS 125 Tower Drive data center equipment. There will no longer be any active equipment at the RAILS data center, so this insurance is no longer needed.

5140	Repairs & Maintenance	\$900
-------------	----------------------------------	--------------

Used for facility repairs including door fob security maintenance and repairs.

5150	Custodial Service & Supplies	\$9,000
-------------	---	----------------

SWAN's cleaning service was changed for two days per week.

5190	Other Building Maintenance	\$150
-------------	-----------------------------------	--------------

Used for alarms and security cameras related to facility expense.

SWAN's 2019-2023 five-year strategic plan places emphasis on delivering solutions to libraries using the talent of the SWAN employees. Prior budgets mixed the staff professional development and efforts to provide membership development. The new SWAN budget structure ensures expenses associated with each category are understood and budgeted appropriately, as they have at times made it difficult to understand mid-year expenses properly.

SWAN staff attend various conferences annually such as ILA, COSUGI, ALA, or the COSUGI Consortia Special Interest Group meeting. This includes expenditures for overnight lodging, fares for airfare, planes, trains, taxicabs, auto rental, meals, etc. Due to the pandemic, there is no planned conference travel in the FY22 budget.

Expenses related to SWAN staff meetings, mostly food and a holiday luncheon, are recorded in this line.

SWAN employees participate in presentations at ILA, ALA, COSUGI and other professional organization events. Attending the annual COSUGI conference is a must for SWAN staff as it allows the organization to plan for upcoming library software features and functions.

SWAN employees participate in ALA, ILA, and COSUGI activities, often presenting at conferences. Individual

The FY22 budget reduced some of the online learning expenses for employees.

SWAN employees will participate in online learning with companies Coursera, OS Training, and Microsoft.

This budget category focuses on providing professional development for the member libraries within SWAN. This includes SWAN staff consulting, leading meetings, and facilitating membership networking events.

The SWAN organization has no vehicles and reimburses employees for mileage attending the 50+ membership meetings held annually. Travel reduced for the FY22 budget due to the pandemic, but some mileage reimbursement will occur.

Refreshments for the 50+ membership advisory and user group meetings held annually, such as coffee and donuts, or other activity supplies. Reduced to zero for the FY22 budget due to the pandemic.

Expenses related to printing library promotional material such as bookmarks or brochures.

SWAN's annual conference, called SWAN Expo (or SWANx), supports speaker fees, honorarium, and travel expense for speakers. Costs associated with the facility and event are noted with the budget lines ending in "99" within this budget chart of accounts. The SWAN Expo for 2021 will remain suspended and this expense is reduced to zero.

This budget category includes technology expenses related to SWAN's resource sharing platform. The platform includes expenses related to the technology required to run the platform for library content within the consortium.

Expenses related to SWAN's support infrastructure including SSL Certificates for SWAN, domain subscription, SonicWALL Security licensing and subscription, Microsoft Active Directory, Microsoft Azure, and Microsoft Server licenses. The FY22 budget includes an increase to cover expenses for SWAN hosting Aspen and additional servers within our Azure infrastructure.

Expenses related to SWAN's support software application include employee tools to create videos, deploy client software, design presentations, run meetings, and create instructional material. Vendor licensing includes: Formsite (webform software subscription), SurveyMonkey (for ongoing usability Input), MailChimp for e-newsletter, Envisionware One-Stop Self-Checkout Software, Adobe Acrobat, Adobe Creative Suite, Asana, Axure RP 8 Perpetual Pro License, Articulate Storyline, Storyblocks, LastPass, Microsoft Office O365, Microsoft Visio Pro O365, Ecobee, Panda Virus Protection & Patch Management, and MSI Package Installer.

The server licensing expenses related to SWAN's library services platform to run SirsiDynix Symphony and test systems. The membership virtual private network utilizing SonicWALL is supported through a group purchase of 100 nodes at \$12,155 annually for FY22 to keep SonicWALL appliances on the most current version of the software.

- 5440 Library Services Platform \$1,036,800**
The heart of SWAN's resource sharing software platform expenses is recorded in this budget line, including expenses from SirsiDynix, OCLC, and EBSCO Discovery Services, and OpenAthens. For FY22, SirsiDynix expenses are budgeted for \$512,632, OCLC at \$268,449, and the Article Search integration through EBSCO Discovery Services and OpenAthens is \$170,708 total. This line includes licensing three libraries to licensing for OCLC, EBSCO Discovery Services, and OpenAthens. New for this year is support from ByWater Solutions for SWAN's Aspen Discovery Services at \$85,000.
- 5450 Data Management Services \$27,500**
Expenses related to maintaining bibliographic and user data within the SWAN library services platform. This includes software provided to cataloging libraries to maintain bibliographic standards of the consortium. Vendors expenses include: ALA RDA Toolkit for Cataloging Libraries, WebDewey (OCLC negotiated directly with SWAN), MARCIVE (ongoing authority updates), The MARC of Quality (TMQ), and Unique Management Services National Change of Address (NCOA) patron database update expense at \$10,000 annually.
- 5460 Information Subscription Service \$76,600**
SWAN's discovery platform includes multiple add-on services to add cover artwork and reading recommendations. Vendor expenses include: ProQuest Syndetic Solutions (book jackets, enhanced content), EBSCO Novelist Select (reviews content). The addition of three libraries to SWAN increased Novelist Select licensing.
- 5470 Subscription Support Services \$9,900**
SWAN's support platform includes remote desktop assistance to library staff, online training, and remote monitoring of systems for SWAN on-call staff. New to FY21 is the TalentLMS learning management system. This service will be used to create library staff coursework and classes provided through SWAN, SirsiDynix, EBSCO, and OCLC depending on library role. Expenses associated with this budget line include: Citrix GoToAssist, Citrix GoToMeeting (Plus for 100 attendees), StatusCake (for site monitoring and alerting SWAN staff to outages), Articulate Storyline (for interactive, online learning) and the volume email service through SendGrid (patron notification plus library notification).
- 5480 Telecommunications \$20,400**
Expenses associated with SWAN facility connection to the internet and phone support.
- 5490 Group Purchases - Services \$12,600**
SWAN will periodically arrange a software group purchase. Those expenses are recorded here if libraries are invoiced back for the expense, which would be recorded as revenue in the budget line 4190. The budget is supporting an ongoing Envisionware software group purchase for a self-check system, which has annual maintenance for support. New to this budget in FY22 is Curbside Communicator with Unique Management, which is a \$12,000 expense offset by revenue from SWAN invoicing member libraries for the service.

General Office

This category is primarily the expenses associated with running the organization's headquarters at 800 Quail Ridge Drive.

5510 Office Supplies \$1,500

Expenses associated with routine office work including paper, staff supplies, and anything costing less than \$5,000.

5520 Postage \$1,500

Expenses associated with shipping printed material are recorded in this line. SWAN staff make best attempts to control shipping costs through bringing printed material to membership events.

5550 Furniture \$0

If SWAN needs to add any training or collaboration furniture for the facility conference room or work areas, this is the budget and expense is recorded.

5599 Annual Conference Supplies \$0

All supply expenses associated with the annual conference SWAN Expo which include envelopes, paper, and presentations. SWAN Expo for 2021 will be suspended due to the global pandemic.

Hardware & Equipment

SWAN utilizes a very light footprint for its headquarters, staff, and services to libraries.

5610 Equipment Rental/Maintenance \$3,700

All expenses associated with equipment leased at 800 Quail Ridge, including the single staff multi-use copier printer.

5620 Hardware \$1,000

Expenses for this budget related to SWAN staff peripheral devices.

5690 Group Purchases - Hardware \$0

Any pass-through purchases for equipment required for membership, such as firewall, commerce, or print solutions required by SWAN. No group purchases planned for the FY22 budget.

Insurance

SWAN organization insurance includes insuring the SWAN governing board, facility, and business for risk of crime, cybercrime, and flood.

5700 Insurance \$9,400

The SWAN organization insurance for directors and officers, and business owner's insurance.

\$5,000

\$17,560

[illegible]

\$1,000

\$3,600

\$0

\$38,000

\$900

\$0

5910	Print Materials	\$5,000
------	-----------------	---------

This line is intended for print collections supplied to member libraries, either through a direct order through Baker & Taylor, or rental copies via the jobber. SWAN is also dedicating \$5,000 from the reserves in a book rental trial with Baker & Taylor to supplement popular titles to reduce hold queue wait times.

5920	Reimbursement for Resource Sharing	\$30,000
------	------------------------------------	----------

Expenses related to the SWAN member libraries centralized reimbursement of unreturned material. The expenses in this line are offset by revenue in the 4220 Reimbursement Losses for Resource Sharing line.

5930	Electronic Resources	\$0
------	----------------------	-----

This line's purpose is for online content provided to all libraries as part of SWAN's membership fees. It may include eBook content, online databases subscriptions, or other e-content.

5990	Group Purchases - Content	\$450,584
------	---------------------------	-----------

SWAN negotiated group purchase for online subscriptions through EBSCO anticipates a 3% increase for FY22. The associated revenue offset in the revenue 4190 budget line.

Interest & Fees

6010	Bank Fees	\$3,700
------	-----------	---------

Expenses associated with bank fees for stopping checks or other services are recorded in this line. The banking service for lock box deposits was added to this budget line at \$2,700 annually.

6020	Merchant Account Fees	\$40
------	-----------------------	------

SWAN subscribes to ProPay as part of the BLUEcloud Commerce required for online Enterprise payments. SWAN pays \$40 annually, as do all member libraries within the ProPay service.

6030	Interest Payment	\$0
------	------------------	-----

Expenses for any loan or debt service payments would be recorded in this line. SWAN currently has no expenses for this line.

6099	Annual Conference Merchant Fees	\$0
<p>Expenses associated with any online transaction fees for processing annual conference SWAN Expo online payments are recorded in this line. The SWAN Expo is suspended for FY22 due to the global pandemic.</p>		

Asset Management

6110	Depreciation	\$2,322
<p>For proprietary funds and government-wide financial statements only. Depreciation charges are intended to allocate the cost of a fixed asset over the estimated useful life of the unit in a systematic and rational manner using the straight-line method. The number of physical assets depreciated has fallen dramatically since SWAN moved to an infrastructure-as-a-service model and no longer needs to purchase servers over \$5,000. SirsiDynix migration and operating system server migration expenses are in their final years of depreciation.</p>		

6120	(Gain)/Loss on Asset Disposal	\$0
-------------	--------------------------------------	------------

6130	Vacation Expense	\$2,200
<p>Per GASB, Vacation Expense is the account created to segregate the amount of the expense incurred by SWAN for the current years' addition or subtraction to the balance of earned but unused staff vacation time. The Balance Sheet reflects the fact that Compensated Absences has been adjusted for the year-end to show, as of June 30 of the given fiscal year, the current value of this earned but unused vacation. This is more a potential than actual liability as employees most likely will use most of their vacations while being employed.</p>		

SWAN Budget Summary

SWAN Budget	FY21 Budget	FY22 Budget	Change
4000 Membership Fees	\$2,851,863	\$2,921,563	\$69,700
4100 Membership Reimbursements	\$435,394	\$463,984	\$28,590
4200 Reimbursement for Losses	\$900	\$30,900	\$30,000
4300 Grant Revenue	\$623,518	\$522,691	(\$100,827)
4400 Registration & Event Receipts	\$7,600	\$0	(\$7,600)
4500 Investment & Interest	\$37,000	\$2,000	(\$35,000)
4600 Reserve Fund Transfer	\$62,379	\$90,000	\$27,622
Total Revenue	\$4,018,654	\$4,031,138	\$12,485
5000 Salaries & Wages	\$1,546,800	\$1,546,800	\$0
5020 Personnel Benefits	\$516,200	\$500,000	(\$16,200)
5100 Building & Grounds	\$123,304	\$125,854	\$2,551
5200 Professional Development	\$24,800	\$16,200	(\$8,600)
5300 Membership Development	\$9,400	\$2,000	(\$7,400)
5400 Information & Technology Services	\$1,133,100	\$1,255,200	\$122,100
5500 General Office	\$5,300	\$3,000	(\$2,300)
5600 Hardware & Equipment	\$81,700	\$4,700	(\$77,000)
5700 Insurance	\$9,200	\$9,400	\$200
5800 Contractual Services	\$139,210	\$66,060	(\$73,150)
5900 Library Materials & Content	\$425,000	\$485,584	\$60,584
6000 Interest & Fees	\$4,040	\$3,740	(\$300)
Total Operating Expenses	\$4,018,054	\$4,018,538	\$485
6100 Asset Management	\$13,607	\$4,522	(\$9,085)
Excess of revenues over (under) estimated expenses	\$21,500	\$0	

Revenue & Expense Budget		FY21 Budget	FY22 Budget	Change
Revenue				
4000	Membership Fees			
4010	SWAN Full Membership Fees	\$2,851,863	\$2,917,863	\$66,000
4011	SWAN Internet Access Membership Fees	\$0	\$3,700	\$3,700
4100	Membership Reimbursements			
4110	Member One-Time Project Receipts	\$14,000	\$0	(\$14,000)
4190	Member Group Purchase Receipts	\$421,394	\$463,984	\$42,590
4200	Reimbursement for Losses			
4220	Reimbursement Losses for Resource Sharing	\$0	\$30,000	\$30,000
4230	Collection Agency Fees	\$900	\$900	\$0
4300	Grant Revenue			
4310	RAILS Support to SWAN	\$562,018	\$522,691	(\$39,327)
4320	Other Grant Revenue	\$61,500	\$0	(\$61,500)
4400	Registration & Event Receipts			
4499	Annual Conference Receipts	\$7,600	\$0	(\$7,600)
4500	Investment & Interest			
4510	Interest Income	\$37,000	\$2,000	(\$35,000)
4520	Investment Income	\$0	\$0	\$0
4600	Reserve Fund Transfer	\$62,379	\$90,000	\$27,622
Total Revenue		\$4,018,654	\$4,031,138	\$12,485
Expenses				
5000	Salaries & Wages	\$1,546,800	\$1,546,800	\$0
5020	Personnel Benefits			
5021	Social Security Taxes	\$118,400	\$118,400	\$0
5022	State Unemployment Insurance	-	-	
5023	Worker's Compensation	\$3,000	\$3,000	\$0
5024	Retirement Benefits	\$140,900	\$140,900	\$0
5025	Health, Dental, Life And Disability Insurance	\$246,300	\$234,600	(\$11,700)
5026	Tuition Reimbursements	\$2,500	\$2,500	\$0
5085	Staff Wellness	\$5,100	\$600	(\$4,500)
5100	Building & Grounds			
5110	Rent/Lease	\$105,904	\$110,104	\$4,201
5120	Utilities	\$6,400	\$5,700	(\$700)

Revenue & Expense Budget		FY21 Budget	FY22 Budget	Change
5130	Property Insurance	\$1,500	\$0	(\$1,500)
5140	Repairs & Maintenance	\$1,300	\$900	(\$400)
5150	Custodial Service & Supplies	\$8,100	\$9,000	\$900
5190	Other Building Maintenance	\$100	\$150	\$50
5200	Professional Development			
5210	Conference Travel	\$11,000	\$0	(\$11,000)
5220	Staff Meetings	\$600	\$600	\$0
5230	Staff Professional Development	\$5,400	\$8,800	\$3,400
5240	Professional Association Membership Dues	\$2,500	\$2,500	\$0
5250	Educational Material	\$800	\$800	\$0
5260	Online Learning	\$4,500	\$3,500	(\$1,000)
5300	Membership Development			
5310	Travel Reimbursement	\$2,800	\$800	(\$2,000)
5320	Membership Meetings	\$2,900	\$0	(\$2,900)
5350	Marketing & Promotional Material	\$1,200	\$1,200	\$0
5399	Annual Conference	\$2,500	\$0	(\$2,500)
5400	Information & Technology Services			
5410	Infrastructure Licensing	\$42,000	\$48,000	\$6,000
5420	Application Software Licensing	\$18,400	\$22,000	\$3,600
5430	Server Software Licensing	\$13,900	\$14,000	\$100
5440	Library Services Platform	\$927,200	\$1,036,800	\$109,600
5450	Data Management Services	\$27,500	\$27,500	\$0
5460	Information Subscription Service	\$74,600	\$76,600	\$2,000
5470	Subscription Support Services	\$10,100	\$9,900	(\$200)
5480	Telecommunications	\$19,400	\$20,400	\$1,000
5490	Group Purchases - Services	\$600.00	\$12,600.00	\$12,000
5500	General Office			
5510	Office Supplies	\$4,000	\$1,500	(\$2,500)
5520	Postage	\$900	\$1,500	\$600
5550	Furniture	\$0	\$0	\$0
5599	Annual Conference Supplies	\$400	\$0	(\$400)
5600	Hardware & Equipment			
5610	Equipment Rental/Maintenance	\$3,700	\$3,700	\$0
5620	Hardware	\$63,200	\$1,000	(\$62,200)
5690	Group Purchases - Hardware	\$14,800	\$0	(\$14,800)
5700	Insurance	\$9,200	\$9,400	\$200

Revenue & Expense Budget		FY21 Budget	FY22 Budget	Change
5800	Contractual Services			
5810	Legal	\$5,000	\$5,000	\$0
5820	Accounting	\$20,610	\$17,560	(\$3,050)
5830	Consulting	\$5,000	\$1,000	(\$4,000)
5840	Payroll Service Fees	\$3,900	\$3,600	(\$300)
5850	Contractual Agreements	\$56,500	\$0	(\$56,500)
5860	Notification & Collection	\$35,300	\$38,000	\$2,700
5870	Recruitment	\$900	\$900	\$0
5899	Annual Conference Facility Contract	\$12,000	\$0	(\$12,000)
5900	Library Materials & Content			
5910	Print Materials	\$5,000	\$5,000	\$0
5920	Reimbursement for Resource Sharing	\$0	\$30,000	\$30,000
5930	Electronic Resources		\$0	\$0
5990	Group Purchases - Content	\$420,000	\$450,584	\$30,584
6000	Interest & Fees			
6010	Bank Fees	\$3,700	\$3,700	\$0
6020	Merchant Account Fees	\$40	\$40	\$0
6030	Interest Payment	\$0	\$0	\$0
6099	Annual Conference Merchant Fees	\$300	\$0	(\$300)
Subtotal Expenses		\$3,997,154	\$4,031,138	\$12,485
6100	Asset Management			
6110	Depreciation	\$3,607	\$2,322	(\$1,285)
6120	(Gain)/Loss on Asset Disposal		\$0	
6130	Vacation Expense	\$10,000	\$2,200	(\$7,800)
Total Expenses		\$3,997,154	\$4,031,138	\$33,985

Total Revenue (from above)	\$4,018,654	\$4,031,138
-----------------------------------	--------------------	--------------------

Excess of revenues over (under) estimated expenses	\$21,500.00	\$0.00
---	--------------------	---------------

FY21 Budget	FY22 Budget
--------------------	--------------------

SWAN Reserves Plan: Updated for FY22 Budget

Capital Expenditures (anything over \$5,000)	FY21	FY22	FY23	FY24	FY25
	July 2020-June 2021	July 2021-June 2022	July 2022-June 2023	July 2023-June 2024	July 2023-June 2025
Prior Year Balance: End of fiscal year, final audit, see "Unrestricted" on Balance Sheet	\$2,035,646	\$1,998,710	\$1,908,710	\$1,908,710	\$1,908,710
Reserves collected & Impact Fee	\$26,283	\$0	\$0	\$0	\$0
Server replacement: no longer required with cloud-based Infrastructure-as-a-Service*	\$0	\$0	\$0	\$0	\$0
Firewall replacement: no longer required with cloud-based Infrastructure-as-a-Service	\$0	\$0	\$0	\$0	\$0
Aspen Discovery Project		(\$85,000)			
Baker & Taylor Project	(\$5,000)	(\$5,000)			
Funds for EMV commerce devices (chip & PIN)	(\$14,000)				
Funds for SWAN staff computer replacement	(\$44,219)				
Future ILS Migration Budget (\$465,740)					
Total	\$1,998,710	\$1,908,710	\$1,908,710	\$1,908,710	\$1,908,710
Maintain 4 months operating in reserve (policy)	(\$1,332,385)	(\$1,343,713)	(\$1,410,898)	(\$1,481,443)	(\$1,555,516)
Over/(Under) Reserve Policy	\$666,325	\$564,997	\$497,812	\$427,267	\$353,194
Operating Budget (5% increases each year after FY21)	\$3,997,154	\$4,031,138	\$4,232,695	\$4,444,330.13	\$4,666,546.64

* Infrastructure-as-a-Service (IaaS) is the recommended direction for SWAN for its future servers. IaaS is a subscription that will be an expense in the operating budget. The result is there is no server hardware purchased, therefore no need to budget as a capital expenditure.

Chart 1: Membership Fee Chart for FY22 SWAN Budget
(July 1, 2021 - June 30, 2022)

SWAN Library	Base + Funding Fees (No State LLSAP Grant)	State LLSAP Grant Discount	Fee Total FY22	FY21 Fees	Change FY22 vs FY21
Acorn Public Library District	\$ 28,004	(\$5,502)	\$ 22,502	\$ 22,171	\$ 331
Alsip-Merrionette Park Public Library District	\$ 40,272	(\$5,502)	\$ 34,770	\$ 34,743	\$27
Batavia Public Library District	\$ 51,865	(\$5,502)	\$ 46,363	\$ 46,672	(\$309)
Bedford Park Public Library District	\$ 31,203	(\$5,502)	\$ 25,701	\$ 25,233	\$468
Beecher Community Library District	\$ 20,721	(\$5,502)	\$ 15,219	\$ 14,772	\$447
Bellwood Public Library	\$ 34,365	(\$5,502)	\$ 28,862	\$ 29,723	(\$861)
Bensenville Community Public Library District	\$ 33,120	(\$5,502)	\$ 27,618	\$ 27,371	\$247
Bensenville Elementary School District #2	\$ 17,500		\$ 17,500	\$ 17,500	\$0
Berkeley Public Library	\$ 21,411	(\$5,502)	\$ 15,909	\$ 15,478	\$431
Berwyn Public Library	\$ 51,119	(\$5,502)	\$ 45,617	\$ 46,379	(\$762)
Bloomington Public Library	\$ 46,462	(\$5,502)	\$ 40,960	\$ 41,052	(\$92)
Blue Island Public Library	\$ 29,330	(\$5,502)	\$ 23,828	\$ 23,783	\$45
Bridgeview Public Library	\$ 28,569	(\$5,502)	\$ 23,067	\$ 23,038	\$29
Broadview Public Library District	\$ 29,031	(\$5,502)	\$ 23,529	\$ 23,089	\$440
Brookfield Public Library	\$ 39,815	(\$5,502)	\$ 34,313	\$ 34,142	\$171
Calumet City Public Library	\$ 32,161	(\$5,502)	\$ 26,659	\$ 26,916	(\$257)
Calumet Park Public Library	\$ 19,358	(\$5,502)	\$ 13,856	\$ 13,468	\$388
Carol Stream Public Library	\$ 51,640	(\$5,502)	\$ 46,138	\$ 46,862	(\$724)
Chicago Heights Public Library	\$ 25,588	(\$5,502)	\$ 20,086	\$ 19,985	\$101
Chicago Ridge Public Library	\$ 31,122	(\$5,502)	\$ 25,620	\$ 25,479	\$141
Cicero Public Library	\$ 34,638	(\$5,502)	\$ 29,136	\$ 29,264	(\$128)
Clarendon Hills Public Library	\$ 25,163	(\$5,502)	\$ 19,661	\$ 19,236	\$425
Crestwood Public Library District	\$ 22,964	(\$5,502)	\$ 17,462	\$ 17,039	\$423
Crete Public Library District	\$ 34,918	(\$5,502)	\$ 29,416	\$ 29,631	(\$215)
Dolton Public Library District	\$ 28,569	(\$5,502)	\$ 23,067	\$ 23,716	(\$649)
Downers Grove Public Library	\$ 70,300	(\$5,502)	\$ 64,797	\$ 58,340	\$6,457
Eisenhower Public Library District	\$ 53,800	(\$5,502)	\$ 48,298	\$ 47,554	\$744
Elmwood Park Public Library	\$ 33,423	(\$5,502)	\$ 27,921	\$ 27,573	\$348
Evergreen Park Public Library	\$ 29,192	(\$5,502)	\$ 23,690	\$ 23,338	\$352
Flossmoor Public Library	\$ 30,603	(\$5,502)	\$ 25,101	\$ 24,882	\$219
Forest Park Public Library	\$ 35,684	(\$5,502)	\$ 30,182	\$ 30,024	\$158
Frankfort Public Library District	\$ 41,024	(\$5,502)	\$ 35,522	\$ 35,042	\$480
Franklin Park Public Library District	\$ 35,773	(\$5,502)	\$ 30,271	\$ 29,909	\$362
Geneva Public Library District	\$ 66,762	(\$5,502)	\$ 61,260	\$ 61,537	(\$277)
Glen Ellyn Public Library	\$ 58,437	(\$5,502)	\$ 52,935	\$ 53,438	(\$503)
Glenside Public Library District	\$ 50,773	(\$5,502)	\$ 45,271		
Glenwood-Lynwood Public Library District	\$ 27,136	(\$5,502)	\$ 21,634	\$ 21,890	(\$256)
Grande Prairie Public Library District	\$ 32,107	(\$5,502)	\$ 26,605	\$ 26,496	\$109
Green Hills Public Library District	\$ 39,278	(\$5,502)	\$ 33,776	\$ 36,226	(\$2,450)
Harvey Public Library District	\$ 25,996	(\$5,502)	\$ 20,494	\$ 20,486	\$8
Hillside Public Library	\$ 29,947	(\$5,502)	\$ 24,445	\$ 23,771	\$674
Hinsdale Public Library	\$ 45,491	(\$5,502)	\$ 39,989	\$ 39,765	\$224
Hodgkins Public Library District	\$ 23,355	(\$5,502)	\$ 17,853	\$ 17,365	\$488
Homewood Public Library District	\$ 39,093	(\$5,502)	\$ 33,591	\$ 33,432	\$159
Indian Prairie Public Library District	\$ 52,924	(\$5,502)	\$ 47,422	\$ 47,988	(\$566)
Itasca Community Library	\$ 32,639	(\$5,502)	\$ 27,137	\$ 26,671	\$466
Justice Public Library District	\$ 20,776	(\$5,502)	\$ 15,274	\$ 14,785	\$489
Kaneville Public Library District	\$ 18,524	(\$5,502)	\$ 13,022	\$ 12,570	\$452
La Grange Public Library	\$ 41,150	(\$5,502)	\$ 35,648	\$ 35,373	\$275
LaGrange Park Public Library District	\$ 35,703	(\$5,502)	\$ 30,201	\$ 30,094	\$107
Lansing Public Library	\$ 39,881	(\$5,502)	\$ 34,379	\$ 34,996	(\$617)
Lyons Public Library	\$ 24,297	(\$5,502)	\$ 18,795	\$ 18,405	\$390
Markham Public Library	\$ 22,648	(\$5,502)	\$ 17,146	\$ 16,623	\$523

Chart 1: Membership Fee Chart for FY22 SWAN Budget
(July 1, 2021 - June 30, 2022)

SWAN Library	Base + Funding Fees (No State LLSAP Grant)	State LLSAP Grant Discount	Fee Total FY22	FY21 Fees	Change FY22 vs FY21
Matteson Area Public Library District	\$ 40,965	(\$5,502)	\$ 35,463	\$ 34,615	\$848
Maywood Public Library District	\$ 30,077	(\$5,502)	\$ 24,575	\$ 24,418	\$157
McCook Public Library District	\$ 21,779	(\$5,502)	\$ 16,277	\$ 15,725	\$552
Melrose Park Public Library	\$ 26,874	(\$5,502)	\$ 21,372	\$ 20,909	\$463
Messenger Public Library of North Aurora	\$ 35,166	(\$5,502)	\$ 29,664	\$ 29,217	\$447
Midlothian Public Library	\$ 31,746	(\$5,502)	\$ 26,244	\$ 24,505	\$1,739
Morton Arboretum	\$ 12,500		\$ 12,500	\$ 12,500	\$0
Nancy L. McConathy Public Library District	\$ 20,168	(\$5,502)	\$ 14,666	\$ 14,321	\$345
National University of Health Sciences	\$ 11,667		\$ 11,667	\$ 11,667	\$0
North Riverside Public Library District	\$ 27,550	(\$5,502)	\$ 22,048	\$ 21,735	\$313
Northlake Public Library District	\$ 36,151	(\$5,502)	\$ 30,649	\$ 30,521	\$128
Oak Brook Public Library	\$ 26,909	(\$5,502)	\$ 21,407	\$ 21,255	\$152
Oak Lawn Public Library	\$ 70,762	(\$5,502)	\$ 65,260	\$ 66,262	(\$1,002)
Oak Park Public Library	\$ 104,606	(\$5,502)	\$ 99,104	\$ 97,015	\$2,089
Palos Heights Public Library	\$ 29,916	(\$5,502)	\$ 24,414	\$ 24,464	(\$50)
Palos Park Public Library	\$ 22,260	(\$5,502)	\$ 16,758	\$ 16,336	\$422
Park Forest Public Library	\$ 36,171	(\$5,502)	\$ 30,669	\$ 31,271	(\$602)
Prairie State College	\$ 23,333		\$ 23,333	\$ 23,333	\$0
Prairie Trails Public Library District	\$ 36,129	(\$5,502)	\$ 30,627	\$ 30,251	\$376
Richton Park Public Library District	\$ 26,739	(\$5,502)	\$ 21,237	\$ 20,715	\$522
River Forest Public Library	\$ 30,132	(\$5,502)	\$ 24,630	\$ 24,309	\$321
River Grove Public Library District	\$ 21,953	(\$5,502)	\$ 16,451	\$ 16,018	\$433
Riverdale Public Library District	\$ 22,445	(\$5,502)	\$ 16,943	\$ 16,754	\$189
Riverside Public Library	\$ 28,507	(\$5,502)	\$ 23,005	\$ 22,669	\$336
Roselle Public Library District	\$ 35,669	(\$5,502)	\$ 30,167		
Schiller Park Public Library	\$ 27,863	(\$5,502)	\$ 22,361	\$ 21,943	\$418
South Holland Public Library	\$ 38,103	(\$5,502)	\$ 32,601	\$ 32,092	\$509
St Charles Public Library District	\$ 95,758	(\$5,502)	\$ 90,256	\$ 91,246	(\$990)
Steger-South Chicago Heights Public Library District	\$ 21,618	(\$5,502)	\$ 16,116	\$ 15,810	\$306
Stickney-Forest View Public Library District	\$ 29,649	(\$5,502)	\$ 24,147	\$ 23,767	\$380
Sugar Grove Public Library District	\$ 23,975	(\$5,502)	\$ 18,473	\$ 18,037	\$436
Summit Public Library District	\$ 21,164	(\$5,502)	\$ 15,662	\$ 15,294	\$368
Theosophical Society in America	\$ 12,500		\$ 12,500	\$ 12,500	\$0
Thomas Ford Memorial Library	\$ 31,689	(\$5,502)	\$ 26,187	\$ 25,602	\$585
Thornton Public Library	\$ 19,131	(\$5,502)	\$ 13,629	\$ 13,123	\$506
Tinley Park Public Library	\$ 67,972	(\$5,502)	\$ 62,470	\$ 63,364	(\$894)
Town and Country Public Library District	\$ 30,582	(\$5,502)	\$ 25,080	\$ 24,577	\$503
University Park Public Library District	\$ 23,214	(\$5,502)	\$ 17,712	\$ 17,264	\$448
Villa Park Public Library	\$ 38,764	(\$5,502)	\$ 33,262	\$ 41,521	(\$8,259)
Warrenville Public Library District	\$ 34,627	(\$5,502)	\$ 29,125		
West Chicago Public Library District	\$ 39,537	(\$5,502)	\$ 34,035	\$ 33,829	\$206
Westchester Public Library	\$ 30,174	(\$5,502)	\$ 24,672	\$ 24,334	\$338
Westmont Public Library	\$ 36,569	(\$5,502)	\$ 31,067	\$ 30,731	\$336
William Leonard Public Library District	\$ 20,039	(\$5,502)	\$ 14,537	\$ 13,616	\$921
Wood Dale Public Library District	\$ 41,691	(\$5,502)	\$ 36,188	\$ 35,813	\$375
Woodridge Public Library	\$ 54,724	(\$5,502)	\$ 49,222	\$ 49,171	\$51
Worth Public Library District	\$ 25,418	(\$5,502)	\$ 19,916	\$ 19,560	\$356

Chart 2: Public Library County Tax Payments

Library Name	Cook County Treasurer Tax Year 2018	DuPage County Treasurer Tax Year 2018	Kane County Treasurer Tax Year 2018	Will County County Treasurer Tax Year 2018	Total Tax Revenue Issued 2018	Bond Amount (Removed)	Public Library Tax Revenue Total 2018
Acorn Public Library District	\$1,114,513.21				\$1,114,513.21	(\$60,825.00)	\$1,053,688.21
Alsip-Merrionette Park Public Library District	\$2,893,217.08				\$2,893,217.08	(\$585,000.00)	\$2,308,217.08
Batavia Public Library District			\$4,209,374.29		\$4,209,374.29	(\$715,575.00)	\$3,493,799.29
Bedford Park Public Library District	\$1,380,795.45				\$1,380,795.45	\$0.00	\$1,380,795.45
Beecher Community Library District				\$308,873.61	\$308,873.61	\$0.00	\$308,873.61
Bellwood Public Library	\$1,704,127.07				\$1,704,127.07	\$0.00	\$1,704,127.07
Bensenville Community Public Library District		\$1,576,909.64			\$1,576,909.64	\$0.00	\$1,576,909.64
Berkeley Public Library	\$379,480.70				\$379,480.70	\$0.00	\$379,480.70
Berwyn Public Library	\$3,417,440.72				\$3,417,440.72	\$0.00	\$3,417,440.72
Bloomington Public Library		\$2,941,293.65			\$2,941,293.65	\$0.00	\$2,941,293.65
Blue Island Public Library	\$1,189,279.08				\$1,189,279.08	\$0.00	\$1,189,279.08
Bridgeview Public Library	\$1,369,938.59				\$1,369,938.59	(\$258,462.50)	\$1,111,476.09
Broadview Public Library District	\$1,427,023.88				\$1,427,023.88	(\$268,305.00)	\$1,158,718.88
Brookfield Public Library	\$2,261,524.53				\$2,261,524.53	\$0.00	\$2,261,524.53
Calumet City Public Library	\$1,578,766.67				\$1,578,766.67	(\$100,000.00)	\$1,478,766.67
Calumet Park Public Library	\$169,524.39				\$169,524.39	\$0.00	\$169,524.39
Carol Stream Public Library		\$3,705,176.27			\$3,705,176.27	(\$234,461.00)	\$3,470,715.27
Chicago Heights Public Library	\$806,610.55				\$806,610.55	\$0.00	\$806,610.55
Chicago Ridge Public Library	\$1,372,499.82				\$1,372,499.82	\$0.00	\$1,372,499.82
Cicero Public Library	\$1,732,122.87				\$1,732,122.87	\$0.00	\$1,732,122.87
Clarendon Hills Public Library		\$763,119.62			\$763,119.62	\$0.00	\$763,119.62
Crestwood Public Library District	\$538,277.00				\$538,277.00	\$0.00	\$538,277.00
Crete Public Library District				\$1,760,766.73	\$1,760,766.73	\$0.00	\$1,760,766.73
Dolton Public Library District	\$1,111,491.52				\$1,111,491.52	\$0.00	\$1,111,491.52
Downers Grove Public Library		\$5,378,934.10			\$5,378,934.10	\$0.00	\$5,378,934.10
Eisenhower Public Library District	\$4,358,781.13				\$4,358,781.13	(\$667,147.00)	\$3,691,634.13
Elmwood Park Public Library	\$1,607,840.41				\$1,607,840.41	\$0.00	\$1,607,840.41
Evergreen Park Public Library	\$1,175,161.59				\$1,175,161.59	\$0.00	\$1,175,161.59
Flossmoor Public Library	\$1,319,488.10				\$1,319,488.10	\$0.00	\$1,319,488.10
Forest Park Public Library	\$1,839,037.81				\$1,839,037.81	\$0.00	\$1,839,037.81
Frankfort Public Library District	\$22,647.27			\$2,362,528.30	\$2,385,175.57	\$0.00	\$2,385,175.57
Franklin Park Public Library District	\$1,848,137.20				\$1,848,137.20	\$0.00	\$1,848,137.20
Geneva Public Library District			\$6,621,022.03		\$6,621,022.03	(\$1,603,882.88)	\$5,017,139.15
Glen Ellyn Public Library		\$4,669,993.11			\$4,669,993.11	(\$504,182.00)	\$4,165,811.11
Glenside Public Library District		\$3,750,230.10			\$3,750,230.10	(\$368,157.52)	\$3,382,072.58
Glenwood-Lynwood Public Library District	\$1,423,356.59				\$1,423,356.59	(\$458,412.50)	\$964,944.09
Grande Prairie Public Library District	\$1,473,236.36				\$1,473,236.36	\$0.00	\$1,473,236.36

Chart 2: Public Library County Tax Payments

Library Name	Cook County Treasurer Tax Year 2018	DuPage County Treasurer Tax Year 2018	Kane County Treasurer Tax Year 2018	Will County County Treasurer Tax Year 2018	Total Tax Revenue Issued 2018	Bond Amount (Removed)	Public Library Tax Revenue Total 2018
Green Hills Public Library District	\$2,561,630.45				\$2,561,630.45	(\$355,000.00)	\$2,206,630.45
Harvey Public Library District	\$848,310.35				\$848,310.35	\$0.00	\$848,310.35
Hillside Public Library	\$1,252,411.54				\$1,252,411.54	\$0.00	\$1,252,411.54
Hinsdale Public Library	\$385,959.47	\$2,679,323.66			\$3,065,283.13	(\$223,312.00)	\$2,841,971.13
Hodgkins Public Library District	\$578,312.29				\$578,312.29	\$0.00	\$578,312.29
Homewood Public Library District	\$2,329,095.76				\$2,329,095.76	(\$141,395.00)	\$2,187,700.76
Indian Prairie Public Library District	\$223,035.61	\$ 3,379,077.13			\$3,602,112.74	\$0.00	\$3,602,112.74
Itasca Community Library		\$2,472,699.88			\$2,472,699.88	(\$945,039.00)	\$1,527,660.88
Justice Public Library District	\$314,510.31				\$314,510.31	\$0.00	\$314,510.31
Kaneville Public Library District			\$84,262.76		\$84,262.76	\$0.00	\$84,262.76
La Grange Public Library	\$3,024,431.34				\$3,024,431.34	(\$626,450.00)	\$2,397,981.34
LaGrange Park Public Library District	\$1,853,738.69				\$1,853,738.69	(\$12,738.00)	\$1,841,000.69
Lansing Public Library	\$2,454,202.92				\$2,454,202.92	(\$185,900.00)	\$2,268,302.92
Lyons Public Library	\$689,566.48				\$689,566.48	(\$15,000.00)	\$674,566.48
Markham Public Library	\$773,180.28				\$773,180.28	(\$267,218.75)	\$505,961.53
Matteson Area Public Library District	\$2,379,118.59				\$2,379,118.59	\$0.00	\$2,379,118.59
Maywood Public Library District	\$1,265,706.77				\$1,265,706.77	\$0.00	\$1,265,706.77
McCook Public Library District	\$578,273.25				\$578,273.25	(\$161,217.50)	\$417,055.75
Melrose Park Public Library	\$938,080.61				\$938,080.61	\$0.00	\$938,080.61
Messenger Public Library of North Aurora			\$1,786,052.05		\$1,786,052.05	\$0.00	\$1,786,052.05
Midlothian Public Library	\$1,436,320.71				\$1,436,320.71	\$0.00	\$1,436,320.71
Nancy L. McConathy Public Library District	\$307,065.54			\$92.71	\$307,158.25	(\$54,772.44)	\$252,385.81
North Riverside Public Library District	\$1,007,242.03				\$1,007,242.03	\$0.00	\$1,007,242.03
Northlake Public Library District	\$2,529,887.72				\$2,529,887.72	(\$643,100.00)	\$1,886,787.72
Oak Brook Public Library		\$941,675.00			\$941,675.00	\$0.00	\$941,675.00
Oak Lawn Public Library	\$5,756,513.97				\$5,756,513.97	(\$330,275.00)	\$5,426,238.97
Oak Park Public Library	\$9,956,538.98				\$9,956,538.98	(\$1,069,345.03)	\$8,887,193.95
Palos Heights Public Library	\$1,249,213.91				\$1,249,213.91	\$0.00	\$1,249,213.91
Palos Park Public Library	\$466,284.00				\$466,284.00	\$0.00	\$466,284.00
Park Forest Public Library	\$1,543,409.14			\$345,503.26	\$1,888,912.40	\$0.00	\$1,888,912.40
Prairie Trails Public Library District	\$1,884,559.68				\$1,884,559.68	\$0.00	\$1,884,559.68
Richton Park Public Library District	\$1,346,525.57				\$1,346,525.57	(\$422,187.50)	\$924,338.07
River Forest Public Library	\$1,271,263.21				\$1,271,263.21	\$0.00	\$1,271,263.21
River Grove Public Library District	\$434,884.62				\$434,884.62	\$0.00	\$434,884.62
Riverdale Public Library District	\$485,232.90				\$485,232.90	\$0.00	\$485,232.90
Riverside Public Library	\$1,105,118.85				\$1,105,118.85	\$0.00	\$1,105,118.85
Roselle Public Library District		\$1,837,492.46			\$1,837,492.46	\$0.00	\$1,837,492.46

Chart 2: Public Library County Tax Payments

Library Name	Cook County Treasurer Tax Year 2018	DuPage County Treasurer Tax Year 2018	Kane County Treasurer Tax Year 2018	Will County County Treasurer Tax Year 2018	Total Tax Revenue Issued 2018	Bond Amount (Removed)	Public Library Tax Revenue Total 2018
St Charles Public Library District		\$577,238.54	\$7,405,162.19		\$7,982,400.73	\$0.00	\$7,982,400.73
Schiller Park Public Library	\$1,039,225.86				\$1,039,225.86	\$0.00	\$1,039,225.86
South Holland Public Library	\$2,086,400.80				\$2,086,400.80	\$0.00	\$2,086,400.80
Steger-South Chicago Heights Public Library District	\$284,362.57			\$133,875.28	\$418,237.85	(\$17,647.32)	\$400,590.53
Stickney-Forest View Public Library District	\$1,221,904.19				\$1,221,904.19	\$0.00	\$1,221,904.19
Sugar Grove Public Library District			\$1,384,960.93		\$1,384,960.93	(\$743,300.00)	\$641,660.93
Summit Public Library District	\$854,099.73				\$854,099.73	(\$499,913.50)	\$354,186.23
Thomas Ford Memorial Library	\$1,698,635.85				\$1,698,635.85	(\$268,147.00)	\$1,430,488.85
Thornton Public Library	\$146,321.51				\$146,321.51	\$0.00	\$146,321.51
Tinley Park Public Library	\$4,461,139.34			\$1,213,401.34	\$5,674,540.68	(\$533,600.00)	\$5,140,940.68
Town and Country Public Library District			\$1,317,303.53		\$1,317,303.53	\$0.00	\$1,317,303.53
University Park Public Library District	\$9,313.32			\$554,547.46	\$563,860.78	\$0.00	\$563,860.78
Villa Park Public Library		\$3,001,457.04			\$3,001,457.04	(\$847,450.00)	\$2,154,007.04
Warrenville Public Library District		\$1,898,505.40			\$1,898,505.40	(\$167,511.50)	\$1,730,993.90
West Chicago Public Library District		\$2,233,045.39			\$2,233,045.39	\$0.00	\$2,233,045.39
Westchester Public Library	\$1,275,629.27				\$1,275,629.27	\$0.00	\$1,275,629.27
Westmont Public Library		\$1,929,551.58			\$1,929,551.58	\$0.00	\$1,929,551.58
William Leonard Public Library District	\$239,163.87				\$239,163.87	\$0.00	\$239,163.87
Wood Dale Public Library District		\$2,453,302.70			\$2,453,302.70	\$0.00	\$2,453,302.70
Woodridge Public Library		\$3,528,171.40		\$257,972.34	\$3,786,143.74	\$0.00	\$3,786,143.74
Worth Public Library District	\$789,247.05				\$789,247.05	\$0.00	\$789,247.05

Chart 3: Public Library Bond Amounts Reported

Public Library	Bond Amt for FY22 Fee Formula (2018)	Schedule Submitted?	Bond?	County	End of Bond Date
Acorn Public Library District	\$ 60,825	Yes	Yes	Cook	12/1/2029
Alsip-Merrionette Park Public Library District	\$ 585,000	Yes	Yes	Cook	12/15/2020
Batavia Public Library District	\$ 715,575	Yes	Yes	Kane	12/31/2018
Bedford Park Public Library District	\$ -		No		
Beecher Community Library District	\$ -		No		
Bellwood Public Library	\$ -		No	Cook	
Bensenville Community Public Library District	\$ -		No		
Berkeley Public Library	\$ -		No	Cook	
Berwyn Public Library	\$ -		No	Cook	
Bloomington Public Library	\$ -		No		
Blue Island Public Library	\$ -		Unknown	Unknown	
Bridgeview Public Library	\$ 258,463	Yes	Yes	Cook	12/1/2027
Broadview Public Library District	\$ 268,305	Yes	Yes	Cook	12/31/2033
Brookfield Public Library	\$ -		No		
Calumet City Public Library	\$ 100,000	Yes	Yes	Cook	
Calumet Park Public Library	\$ -		Unknown	Unknown	
Carol Stream Public Library	\$ 234,461	Yes	Yes		
Chicago Heights Public Library	\$ -		No		
Chicago Ridge Public Library	\$ -		No		
Cicero Public Library	\$ -		No	Cook	
Clarendon Hills Public Library	\$ -		No		
Crestwood Public Library District	\$ -		No		
Crete Public Library District	\$ -		No		
Dolton Public Library District	\$ -		No		
Downers Grove Public Library	\$ -	Yes	Yes	DuPage	1/31/2017
Eisenhower Public Library District	\$ 667,147	Yes	Yes	Cook	6/15/2027
Elmwood Park Public Library	\$ -		No		
Evergreen Park Public Library	\$ -		No		
Flossmoor Public Library	\$ -		No		

Chart 3: Public Library Bond Amounts Reported

Public Library	Bond Amt for FY22 Fee Formula (2018)	Schedule Submitted?	Bond?	County	End of Bond Date
Forest Park Public Library	\$ -		No		
Frankfort Public Library District	\$ -		No		
Franklin Park Public Library District	\$ -		No		
Geneva Public Library District	\$ 1,603,883	Yes	Yes	Kane	12/31/2037
Glen Ellyn Public Library	\$ 504,182	Yes	Yes	DuPage	
Glenside Public Library District	\$ 368,158	Yes	Yes		
Glenwood-Lynwood Public Library District	\$ 458,413	yes	Yes	Cook	12/1/2030
Grande Prairie Public Library District	\$ -		No		
Green Hills Public Library District	\$ 355,000				
Harvey Public Library District	\$ -		Unknown	Unknown	
Hillside Public Library	\$ -		No		
Hinsdale Public Library	\$ 223,312	Yes	Unknown	Unknown	
Hodgkins Public Library District	\$ -		No		
Homewood Public Library District	\$ 141,395	Yes	Yes	Cook	4/1/2020
Indian Prairie Public Library District	\$ -		No		
Itasca Community Library	\$ 945,039	Yes	Yes	DuPage	12/31/2023
Justice Public Library District	\$ -		No		
Kaneville Public Library District	\$ -		Unknown	Unknown	
La Grange Public Library	\$ 626,450	Yes	Yes	Cook	12/1/2024
LaGrange Park Public Library District	\$ 12,738	yes	Yes	Cook	12/16/2023
Lansing Public Library	\$ 185,900	Yes	Yes	Unknown	
Lyons Public Library	\$ 15,000	Yes	Yes	Cook	
Markham Public Library	\$ 267,219	Yes	Yes	Cook	1/1/2025
Matteson Area Public Library District	\$ -		No		
Maywood Public Library District	\$ -		No		
McCook Public Library District	\$ 161,218	No	Yes	Cook	12/15/2022
Melrose Park Public Library	\$ -		No	Cook	
Messenger Public Library of North Aurora	\$ -		No	Kane	
Midlothian Public Library	\$ -		No		

Chart 3: Public Library Bond Amounts Reported

Public Library	Bond Amt for FY22 Fee Formula (2018)	Schedule Submitted?	Bond?	County	End of Bond Date
Nancy L. McConathy Public Library District	\$ 54,772		No		
North Riverside Public Library District	\$ -		No		
Northlake Public Library District	\$ 643,100	No	Yes	Cook	12/31/2024
Oak Brook Public Library	\$ -		Unknown	Unknown	
Oak Lawn Public Library	\$ 330,275	Yes	Yes	Cook	12/31/2021
Oak Park Public Library	\$ 1,069,345	Yes	Yes	Cook	3/30/2021
Palos Heights Public Library	\$ -		No		
Palos Park Public Library	\$ -		No		
Park Forest Public Library	\$ -		No		
Prairie Trails Public Library District	\$ -		No		
Richton Park Public Library District	\$ 422,188	Yes	Yes	Cook	6/30/2033
River Forest Public Library	\$ -		No		
River Grove Public Library District	\$ -		No	Cook	
Riverdale Public Library District	\$ -		No	Cook	
Riverside Public Library	\$ -		No	Cook	
Roselle Public Library District	\$ -				
St Charles Public Library District	\$ -		No	Kane	#N/A
Schiller Park Public Library	\$ -		Unknown	Unknown	
South Holland Public Library	\$ -		No		
Steger-South Chicago Heights Public Library District	\$ 17,647	Yes	Yes	Cook Will	7/20/2021
Stickney-Forest View Public Library District	\$ -		Unknown	Unknown	
Sugar Grove Public Library District	\$ 743,300		Unknown	Unknown	
Summit Public Library District	\$ 499,914	Yes	Yes	Unknown	
Thomas Ford Memorial Library	\$ 268,147		No		
Thornton Public Library	\$ -		No		
Tinley Park Public Library	\$ 533,600	Yes	Yes	Cook Will	12/22/2022
Town and Country Public Library District	\$ -		Unknown	Unknown	
University Park Public Library District	\$ -		No		
Villa Park Public Library	\$ 847,450	Yes	Yes	DuPage	12/31/2036

Chart 3: Public Library Bond Amounts Reported

Public Library	Bond Amt for FY22 Fee Formula (2018)	Schedule Submitted?	Bond?	County	End of Bond Date
Warrenville Public Library District	\$ 167,512	Yes		DuPage	12/1/2029
West Chicago Public Library District	\$ -		No		
Westchester Public Library	\$ -		No		
Westmont Public Library	\$ -		No	DuPage	
William Leonard Public Library District	\$ -		No	Cook	
Wood Dale Public Library District	\$ -		No	DuPage	
Woodridge Public Library	\$ -		No		
Worth Public Library District	\$ -		No		

Chart 3: Public Library Bond Amounts Reported

Public Library	Annual Debt Service 2015	Annual Debt Service 2016	Annual Debt Service 2017	Annual Debt Service 2018
Acorn Public Library District	\$ 61,605.00	\$ 61,380.00	\$ 61,120.00	\$ 60,825.00
Alsip-Merrionette Park Public Library District	\$ 585,325.00	\$ 588,075.00	\$ 585,450.00	\$ 585,000.00
Batavia Public Library District	\$ 708,500.00	\$ 726,975.00	\$ 721,500.00	\$ 715,575.00
Bedford Park Public Library District				
Beecher Community Library District				
Bellwood Public Library				
Bensenville Community Public Library District				
Berkeley Public Library				
Berwyn Public Library				
Bloomington Public Library				
Blue Island Public Library				
Bridgeview Public Library	\$ 254,062.50	\$ 259,112.50	\$ 258,462.50	\$ 258,462.50
Broadview Public Library District		\$ 222,702.50	\$ 271,905.00	\$ 268,305.00
Brookfield Public Library				
Calumet City Public Library	\$ 100,000.00	\$ 100,000.00	\$ 100,000.00	\$ 100,000.00
Calumet Park Public Library				
Carol Stream Public Library				\$ 234,461.00
Chicago Heights Public Library				
Chicago Ridge Public Library				
Cicero Public Library				
Clarendon Hills Public Library				
Crestwood Public Library District				
Crete Public Library District				
Dolton Public Library District				
Downers Grove Public Library	\$ 614,076.00	\$ 623,487.00	\$ 617,829.00	
Eisenhower Public Library District	\$ 773,805.00	\$ 748,505.00	\$ 665,899.33	\$ 667,147.00
Elmwood Park Public Library				
Evergreen Park Public Library				
Flossmoor Public Library				

Chart 3: Public Library Bond Amounts Reported

Public Library	Annual Debt Service 2015	Annual Debt Service 2016	Annual Debt Service 2017	Annual Debt Service 2018
Forest Park Public Library				
Frankfort Public Library District				
Franklin Park Public Library District				
Geneva Public Library District			\$ 317,985.00	\$ 1,603,882.88
Glen Ellyn Public Library	\$ 510,328.00	\$ 508,108.00	\$ 503,982.00	\$ 504,182.00
Glenside Public Library District	\$ 363,715.02	\$ 365,615.02	\$ 367,115.02	\$ 368,157.52
Glenwood-Lynwood Public Library District	\$ 454,912.50	\$ 454,512.50	\$ 454,012.50	\$ 458,412.50
Grande Prairie Public Library District				
Green Hills Public Library District	\$ 335,000.00	\$ 335,000.00	\$ 350,000.00	\$ 355,000.00
Harvey Public Library District				
Hillside Public Library				
Hinsdale Public Library	\$ 199,582.00	\$ 209,712.00	\$ 216,612.00	\$ 223,312.00
Hodgkins Public Library District				
Homewood Public Library District	\$ 142,625.00	\$ 139,025.00	\$ 140,350.00	\$ 141,395.00
Indian Prairie Public Library District				
Itasca Community Library	\$ 206,476.00	\$ 205,738.00	\$ 204,787.00	\$ 945,039.00
Justice Public Library District				
Kaneville Public Library District				
La Grange Public Library	\$ 627,850.00	\$ 627,550.00	\$ 622,050.00	\$ 626,450.00
LaGrange Park Public Library District				\$ 12,738.00
Lansing Public Library	\$ 191,425.00	\$ 191,787.50	\$ 186,625.00	\$ 185,900.00
Lyons Public Library	\$ 10,000.00	\$ 10,000.00	\$ 15,000.00	\$ 15,000.00
Markham Public Library	\$ 252,575.00	\$ 257,718.75	\$ 262,600.00	\$ 267,218.75
Matteson Area Public Library District				
Maywood Public Library District				
McCook Public Library District	\$ 164,250.00	\$ 160,290.00	\$ 161,030.00	\$ 161,217.50
Melrose Park Public Library				
Messenger Public Library of North Aurora				
Midlothian Public Library				

Chart 3: Public Library Bond Amounts Reported

Public Library	Annual Debt Service 2015	Annual Debt Service 2016	Annual Debt Service 2017	Annual Debt Service 2018
Nancy L. McConathy Public Library District		\$ 55,543.54	\$ 54,772.44	\$ 54,772.44
North Riverside Public Library District				
Northlake Public Library District	\$ 692,619.00	\$ 845,269.00	\$ 633,600.00	\$ 643,100.00
Oak Brook Public Library				
Oak Lawn Public Library	\$ 326,150.00	\$ 329,400.00	\$ 327,400.00	\$ 330,275.00
Oak Park Public Library	\$ 3,067,594.00	\$ 2,594,238.00	\$ 1,088,804.00	\$ 1,069,345.03
Palos Heights Public Library				
Palos Park Public Library				
Park Forest Public Library				
Prairie Trails Public Library District				
Richton Park Public Library District	\$ 423,187.50	\$ 423,087.50	\$ 422,587.50	\$ 422,187.50
River Forest Public Library				
River Grove Public Library District				
Riverdale Public Library District				
Riverside Public Library				
Roselle Public Library District				
St Charles Public Library District				
Schiller Park Public Library				
South Holland Public Library				
Steger-South Chicago Heights Public Library District		\$ 8,823.66	\$ 17,647.32	\$ 17,647.32
Stickney-Forest View Public Library District				
Sugar Grove Public Library District	\$ 678,550.00	\$ 702,950.00	\$ 721,150.00	\$ 743,300.00
Summit Public Library District		\$ 548,985.23	\$ 492,790.00	\$ 499,913.50
Thomas Ford Memorial Library				\$ 268,147.00
Thornton Public Library				
Tinley Park Public Library	\$ 517,400.00	\$ 522,200.00	\$ 531,000.00	\$ 533,600.00
Town and Country Public Library District				
University Park Public Library District				
Villa Park Public Library			\$ 835,241.94	\$ 847,450.00

Chart 3: Public Library Bond Amounts Reported

Public Library	Annual Debt Service 2015	Annual Debt Service 2016	Annual Debt Service 2017	Annual Debt Service 2018
Warrenville Public Library District			\$22,636.25	\$167,511.50
West Chicago Public Library District				
Westchester Public Library				
Westmont Public Library				
William Leonard Public Library District				
Wood Dale Public Library District				
Woodridge Public Library				
Worth Public Library District				

Chart 3: Public Library Bond Amounts Reported

Public Library	Annual Debt Service 2019	Annual Debt Service 2020	Annual Debt Service 2021
Acorn Public Library District	\$ 61,495.00	\$ 61,095.00	\$ 60,660.00
Alsip-Merrionette Park Public Library District	\$ 589,100.00	\$ 587,600.00	
Batavia Public Library District	\$ 726,150.00		
Bedford Park Public Library District			
Beecher Community Library District			
Bellwood Public Library			
Bensenville Community Public Library District			
Berkeley Public Library			
Berwyn Public Library			
Bloomington Public Library			
Blue Island Public Library			
Bridgeview Public Library	\$ 257,450.00	\$ 259,850.00	\$ 256,850.00
Broadview Public Library District	\$ 269,705.00	\$ 271,005.00	\$ 266,630.00
Brookfield Public Library			
Calumet City Public Library	\$ 100,000.00		
Calumet Park Public Library			
Carol Stream Public Library	\$ 234,461.00	\$ 234,461.00	\$ 234,461.00
Chicago Heights Public Library			
Chicago Ridge Public Library			
Cicero Public Library			
Clarendon Hills Public Library			
Crestwood Public Library District			
Crete Public Library District			
Dolton Public Library District			
Downers Grove Public Library			
Eisenhower Public Library District	\$ 667,187.00	\$ 668,571.00	\$ 670,311.00
Elmwood Park Public Library			
Evergreen Park Public Library			
Flossmoor Public Library			

Chart 3: Public Library Bond Amounts Reported

Public Library	Annual Debt Service 2019	Annual Debt Service 2020	Annual Debt Service 2021
Forest Park Public Library			
Frankfort Public Library District			
Franklin Park Public Library District			
Geneva Public Library District	\$ 1,537,071.26	\$ 1,562,196.26	\$ 1,565,271.26
Glen Ellyn Public Library	\$ 497,562.00		
Glenside Public Library District	\$ 368,625.02	\$ 368,682.52	\$ 368,140.02
Glenwood-Lynwood Public Library District	\$ 452,612.50	\$ 453,912.50	\$ 454,912.50
Grande Prairie Public Library District			
Green Hills Public Library District	\$ 365,000.00	\$ 370,000.00	\$ 380,000.00
Harvey Public Library District			
Hillside Public Library			
Hinsdale Public Library	\$ 229,812.00	\$ 241,112.00	\$ 247,112.00
Hodgkins Public Library District			
Homewood Public Library District	\$ 142,053.75	\$ 137,396.25	
Indian Prairie Public Library District			
Itasca Community Library			
Justice Public Library District			
Kaneville Public Library District			
La Grange Public Library	\$ 625,550.00	\$ 629,450.00	\$ 623,050.00
LaGrange Park Public Library District	\$ 148,600.00	\$ 149,775.00	\$ 155,725.00
Lansing Public Library	\$ 184,500.00	\$ 187,800.00	\$ 185,900.00
Lyons Public Library	\$ 15,000.00	\$ 15,000.00	\$ 15,000.00
Markham Public Library	\$ 93,150.00	\$ 93,150.00	\$ 93,150.00
Matteson Area Public Library District			
Maywood Public Library District			
McCook Public Library District	\$ 161,017.50	\$ 165,415.00	\$ 164,035.00
Melrose Park Public Library			
Messenger Public Library of North Aurora			
Midlothian Public Library	\$ 212,609.69	\$ 209,708.50	\$ 212,069.50

Chart 3: Public Library Bond Amounts Reported

Public Library	Annual Debt Service 2019	Annual Debt Service 2020	Annual Debt Service 2021
Nancy L. McConathy Public Library District	\$ 54,772.44	\$ 527,467.40	
North Riverside Public Library District			
Northlake Public Library District	\$ 647,200.00	\$ 689,000.00	\$ 691,750.00
Oak Brook Public Library			
Oak Lawn Public Library	\$ 327,900.00	\$ 328,900.00	\$ 329,600.00
Oak Park Public Library	\$ 1,075,733.95	\$ 1,070,807.08	
Palos Heights Public Library			
Palos Park Public Library			
Park Forest Public Library			
Prairie Trails Public Library District			
Richton Park Public Library District	\$ 422,187.50	\$ 421,000.00	\$ 419,000.00
River Forest Public Library			
River Grove Public Library District			
Riverdale Public Library District			
Riverside Public Library			
Roselle Public Library District			
St Charles Public Library District			
Schiller Park Public Library			
South Holland Public Library			
Steger-South Chicago Heights Public Library District	\$ 17,647.32	\$ 17,647.32	\$ 116,200.68
Stickney-Forest View Public Library District			
Sugar Grove Public Library District	\$ 764,250.00	\$ 789,000.00	\$ 812,400.00
Summit Public Library District	\$ 506,771.50	\$ 508,364.00	\$ 539,779.50
Thomas Ford Memorial Library	\$ 245,800.00	\$ 243,800.00	\$ 241,600.00
Thornton Public Library			
Tinley Park Public Library	\$ 535,200.00	\$ 510,800.00	\$ 536,400.00
Town and Country Public Library District			
University Park Public Library District			
Villa Park Public Library	\$ 838,250.00	\$ 831,850.00	\$ 840,050.00

Chart 3: Public Library Bond Amounts Reported

Public Library	Annual Debt Service 2019	Annual Debt Service 2020	Annual Debt Service 2021
Warrenville Public Library District	\$169,874.75	\$167,188.25	\$169,452.00
West Chicago Public Library District			
Westchester Public Library			
Westmont Public Library			
William Leonard Public Library District			
Wood Dale Public Library District			
Woodridge Public Library			
Worth Public Library District			

Chart 4: Academic, School, Special Library Fees

Academic Libraries

- 1) Student Population (IBHE Profile), rounded to nearest 1,000 * 2 [2018 data reported]
- 2) Title Count rounded to nearest 1,000 / 3

	Population	Item Count	Pop Fee	Item/Title Fee	FY22 Total
National University of Health Sciences	365	28,618	\$ 2,000	\$ 9,667	\$ 11,667
Prairie State College	3,765	46,264	\$ 8,000	\$ 15,333	\$ 23,333

School Libraries

- 1) Student Population (Illinois Report Card), rounded to nearest 1000 * 5 [2018-2019 Report Card data]
- 2) Building Location/Branch Fee \$2,500 per building

	Population	Buildings	Pop Fee	Building Fee	FY22 Total
Bensenville School District #2	2,218	3	\$ 10,000	\$ 7,500	\$ 17,500

Special Libraries

- 1) Title Fee (Tier 1 <10,000 \$7,500; Tier 2 <40,000 \$10,000; Tier 3 > 40,000 \$12,500)
- 2) Building Location/Branch Fee \$2,500 per building

	Buildings	Title Count	Building Fee	Title Fee	FY22 Total
Morton Arboretum	1	23,534	\$ 2,500	\$ 10,000	\$ 12,500
The Theosophical Society in America	1	29,044	\$ 2,500	\$ 10,000	\$ 12,500

Chart 5: SWAN EBSCO Group-purchase discount pricing: 4 pricing groups
Year-2 renewal: July 1, 2021 - June 30, 2022

Library Name	EBSCO FY22 Pricing:			SWAN FY22		FY21 Price (Year-1)	Increase / (Decrease)
	Public Library Tax Revenue Total 2018	RAILS Group B Package with 3% increase	Price Quartile	Group Purchase Discount	Group- Purchase Price (Year-2)		
Acorn Public Library District	\$ 1,053,688.21	\$13,661	Group 1	73%	\$3,689	\$3,477	\$212
Beecher Community Library District	\$ 308,873.61	\$5,423	Group 1	73%	\$1,464	\$1,422	\$43
Berkeley Public Library	\$ 379,480.70	\$5,423	Group 1	73%	\$1,464	\$1,422	\$43
Calumet Park Public Library	\$ 169,524.39	\$5,423	Group 1	73%	\$1,464	\$1,422	\$43
Chicago Heights Public Library	\$ 806,610.55	\$13,263	Group 1	73%	\$3,581	\$3,477	\$104
Cicero Public Library	\$ 1,732,122.87	\$24,947	Group 1	73%	\$6,736	\$6,539	\$196
Crestwood Public Library District	\$ 538,277.00	\$5,423	Group 1	73%	\$1,464	\$1,422	\$43
Harvey Public Library District	\$ 848,310.35	\$9,202	Group 1	73%	\$2,485	\$2,412	\$72
Justice Public Library District	\$ 314,510.31	\$9,202	Group 1	73%	\$2,485	\$2,412	\$72
Kaneville Public Library District	\$ 84,262.76	\$3,111	Group 1	73%	\$840	\$815	\$24
Lyons Public Library	\$ 674,566.48	\$9,202	Group 1	73%	\$2,485	\$2,412	\$72
Markham Public Library	\$ 505,961.53	\$9,202	Group 1	73%	\$2,485	\$2,412	\$72
Melrose Park Public Library	\$ 938,080.61	\$9,202	Group 1	73%	\$2,485	\$2,412	\$72
Nancy L. McConathy Public Library District	\$ 252,385.81	\$9,202	Group 1	73%	\$2,485	\$2,412	\$72
Richton Park Public Library District	\$ 924,338.07	\$9,202	Group 1	73%	\$2,485	\$2,412	\$72
River Grove Public Library District	\$ 434,884.62	\$9,202	Group 1	73%	\$2,485	\$2,412	\$72
Riverdale Public Library District	\$ 485,232.90	\$9,202	Group 1	73%	\$2,485	\$2,412	\$72
Steger-South Chicago Heights Public Library District	\$ 400,590.53	\$9,202	Group 1	73%	\$2,485	\$2,412	\$72
Sugar Grove Public Library District	\$ 641,660.93	\$9,202	Group 1	73%	\$2,485	\$2,412	\$72
Summit Public Library District	\$ 354,186.23	\$9,202	Group 1	73%	\$2,485	\$2,412	\$72
Thornton Public Library	\$ 146,321.51	\$3,111	Group 1	73%	\$840	\$815	\$24
University Park Public Library District	\$ 563,860.78	\$5,423	Group 1	73%	\$1,464	\$2,738	(\$1,274)
William Leonard Public Library District	\$ 239,163.87	\$5,423	Group 1	73%	\$1,464	\$1,422	\$43
Worth Public Library District	\$ 789,247.05	\$9,202	Group 1	73%	\$2,485	\$2,412	\$72
Blue Island Public Library	\$ 1,189,279.08	\$9,202	Group 2	48%	\$4,785	\$4,646	\$139
Bridgeview Public Library	\$ 1,111,476.09	\$9,202	Group 2	48%	\$4,785	\$4,646	\$139
Calumet City Public Library	\$ 1,478,766.67	\$13,263	Group 2	48%	\$6,897	\$6,696	\$201
Chicago Ridge Public Library	\$ 1,372,499.82	\$9,202	Group 2	48%	\$4,785	\$4,646	\$139
Clarendon Hills Public Library	\$ 763,119.62	\$5,423	Group 2	48%	\$2,820	\$2,738	\$82
Dolton Public Library District	\$ 1,111,491.52	\$9,202	Group 2	48%	\$4,785	\$4,646	\$139
Evergreen Park Public Library	\$ 1,175,161.59	\$9,202	Group 2	48%	\$4,785	\$4,646	\$139
Glenwood-Lynwood Public Library District	\$ 964,944.09	\$9,202	Group 2	48%	\$4,785	\$4,646	\$139
Grande Prairie Public Library District	\$ 1,473,236.36	\$13,263	Group 2	48%	\$6,897	\$6,696	\$201
Green Hills Public Library District	\$ 2,206,630.45	\$13,263	Group 2	48%	\$6,897	\$7,211	(\$314)
Maywood Public Library District	\$ 1,265,706.77	\$9,202	Group 2	48%	\$4,785	\$4,646	\$139
McCook Public Library District	\$ 417,055.75	\$3,111	Group 2	48%	\$1,618	\$1,570	\$47
Midlothian Public Library	\$ 1,436,320.71	\$9,202	Group 2	48%	\$4,785	\$4,646	\$139
Palos Heights Public Library	\$ 1,249,213.91	\$9,202	Group 2	48%	\$4,785	\$4,646	\$139
Palos Park Public Library	\$ 466,284.00	\$3,111	Group 2	48%	\$1,618	\$1,570	\$47
Prairie Trails Public Library District	\$ 1,884,559.68	\$13,263	Group 2	48%	\$6,897	\$6,696	\$201
River Forest Public Library	\$ 1,271,263.21	\$9,202	Group 2	48%	\$4,785	\$4,646	\$139
South Holland Public Library	\$ 1,039,225.86	\$9,202	Group 2	48%	\$4,785	\$5,003	(\$218)
Stickney-Forest View Public Library District	\$ 1,221,904.19	\$9,202	Group 2	48%	\$4,785	\$4,646	\$139
Thomas Ford Memorial Library	\$ 1,430,488.85	\$9,202	Group 2	48%	\$4,785	\$4,646	\$139
Town and Country Public Library District	\$ 1,317,303.53	\$9,202	Group 2	48%	\$4,785	\$4,646	\$139
Warrenville Public Library District	\$ 1,730,993.90	\$10,452	Group 2	48%	\$5,435	NEW	
Westchester Public Library	\$ 1,275,629.27	\$9,202	Group 2	48%	\$4,785	\$4,646	\$139

Chart 5: SWAN EBSCO Group-purchase discount pricing: 4 pricing groups
Year-2 renewal: July 1, 2021 - June 30, 2022

Library Name	EBSCO FY22 Pricing:			SWAN FY22		FY21 Price (Year-1)	Increase / (Decrease)
	Public Library Tax Revenue Total 2018	RAILS Group B Package with 3% increase	Price Quartile	Group Purchase Discount	Group- Purchase Price (Year-2)		
Bellwood Public Library	\$ 1,704,127.07	\$9,202	Group 3	44%	\$5,153	\$5,003	\$150
Bensenville Community Public Library District	\$ 1,576,909.64	\$9,202	Group 3	44%	\$5,153	\$4,646	\$507
Berwyn Public Library	\$ 3,417,440.72	\$18,093	Group 3	44%	\$10,132	\$9,837	\$295
Broadview Public Library District	\$ 1,158,718.88	\$5,423	Group 3	44%	\$3,037	\$2,948	\$88
Crete Public Library District	\$ 1,760,766.73	\$9,202	Group 3	44%	\$5,153	\$5,003	\$150
Elmwood Park Public Library	\$ 1,607,840.41	\$9,202	Group 3	44%	\$5,153	\$5,003	\$150
Forest Park Public Library	\$ 1,839,037.81	\$9,202	Group 3	44%	\$5,153	\$5,003	\$150
Frankfort Public Library District	\$ 2,385,175.57	\$13,263	Group 3	44%	\$7,427	\$7,211	\$216
Franklin Park Public Library District	\$ 1,848,137.20	\$9,202	Group 3	44%	\$5,153	\$5,003	\$150
Glenside Public Library District	\$ 3,382,072.58	\$15,064	Group 3	44%	\$8,436	NEW	
Hillside Public Library	\$ 1,252,411.54	\$5,423	Group 3	44%	\$3,037	\$2,948	\$88
Hodgkins Public Library District	\$ 578,312.29	\$3,111	Group 3	44%	\$1,742	\$1,691	\$51
Homewood Public Library District	\$ 2,187,700.76	\$9,202	Group 3	44%	\$5,153	\$5,003	\$150
LaGrange Park Public Library District	\$ 1,841,000.69	\$9,202	Group 3	44%	\$5,153	\$5,003	\$150
Messenger Public Library of North Aurora	\$ 1,786,052.05	\$9,202	Group 3	44%	\$5,153	\$5,003	\$150
North Riverside Public Library District	\$ 1,007,242.03	\$5,423	Group 3	44%	\$3,037	\$2,948	\$88
Northlake Public Library District	\$ 1,886,787.72	\$9,202	Group 3	44%	\$5,153	\$5,003	\$150
Oak Brook Public Library	\$ 941,675.00	\$5,423	Group 3	44%	\$3,037	\$2,948	\$88
Park Forest Public Library	\$ 1,888,912.40	\$9,202	Group 3	44%	\$5,153	\$5,003	\$150
Riverside Public Library	\$ 1,105,118.85	\$5,423	Group 3	44%	\$3,037	\$2,948	\$88
Roselle Public Library District	\$ 1,837,492.46	\$10,452	Group 3	44%	\$5,853	NEW	
Villa Park Public Library	\$ 2,154,007.04	\$9,202	Group 3	44%	\$5,153	\$5,539	(\$386)
West Chicago Public Library District	\$ 2,233,045.39	\$9,202	Group 3	44%	\$5,153	\$5,003	\$150
Westmont Public Library	\$ 1,929,551.58	\$9,202	Group 3	44%	\$5,153	\$5,003	\$150
Alsip-Merrionette Park Public Library District	\$ 2,308,217.08	\$9,202	Group 4	38%	\$5,705	\$5,539	\$166
Batavia Public Library District	\$ 3,493,799.29	\$9,202	Group 4	38%	\$5,705	\$5,539	\$166
Bedford Park Public Library District	\$ 1,380,795.45	\$3,111	Group 4	38%	\$1,929	\$1,872	\$56
Bloomington Public Library	\$ 2,941,293.65	\$9,202	Group 4	38%	\$5,705	\$5,539	\$166
Brookfield Public Library	\$ 2,261,524.53	\$9,202	Group 4	38%	\$5,705	\$5,539	\$166
Carol Stream Public Library	\$ 3,705,176.27	\$13,263	Group 4	38%	\$8,223	\$7,984	\$240
Downers Grove Public Library	\$ 5,378,934.10	\$13,263	Group 4	38%	\$8,223	\$7,984	\$240
Eisenhower Public Library District	\$ 3,691,634.13	\$9,202	Group 4	38%	\$5,705	\$5,539	\$166
Flossmoor Public Library	\$ 1,319,488.10	\$5,423	Group 4	38%	\$3,362	\$2,948	\$414
Geneva Public Library District	\$ 5,017,139.15	\$13,263	Group 4	38%	\$8,223	\$7,984	\$240
Glen Ellyn Public Library	\$ 4,165,811.11	\$9,202	Group 4	38%	\$5,705	\$5,539	\$166
Hinsdale Public Library	\$ 2,841,971.13	\$9,202	Group 4	38%	\$5,705	\$5,539	\$166
Indian Prairie Public Library District	\$ 3,602,112.74	\$13,263	Group 4	38%	\$8,223	\$7,984	\$240
Itasca Community Library	\$ 1,527,660.88	\$5,423	Group 4	38%	\$3,362	\$3,264	\$98
La Grange Public Library	\$ 2,397,981.34	\$9,202	Group 4	38%	\$5,705	\$5,539	\$166
Lansing Public Library	\$ 2,268,302.92	\$9,202	Group 4	38%	\$5,705	\$5,539	\$166
Matteson Area Public Library District	\$ 2,379,118.59	\$9,202	Group 4	38%	\$5,705	\$5,539	\$166
Oak Lawn Public Library	\$ 5,426,238.97	\$18,093	Group 4	38%	\$11,218	\$10,891	\$327
Oak Park Public Library	\$ 8,887,193.95	\$18,093	Group 4	38%	\$11,218	\$10,891	\$327
Schiller Park Public Library	\$ 7,982,400.73	\$9,202	Group 4	38%	\$5,705	\$4,646	\$1,060
St Charles Public Library District	\$ 7,982,400.73	\$18,093	Group 4	38%	\$11,218	\$10,891	\$327
Tinley Park Public Library	\$ 5,140,940.68	\$18,093	Group 4	38%	\$11,218	\$10,891	\$327
Wood Dale Public Library District	\$ 2,453,302.70	\$9,202	Group 4	38%	\$5,705	\$5,539	\$166
Woodridge Public Library	\$ 3,786,143.74	\$13,263	Group 4	38%	\$8,223	\$7,984	\$240