



SWAN Committee of the Whole Meeting Administrators & Directors

Tuesday, February 1, 2022

10:00 a.m. – 12:00 p.m.

Per Illinois Public Act 101-0640, this meeting will be held by remote attendance

Virtual meeting link

<https://www.gotomeet.me/SWANBoard>

You can also dial in using your phone.

United States: +1 (571) 317-3122

Access Code: 327-092-957

Agenda

1. Call to Order
2. Introduction of Visitors
3. Discussion – Proposed SWAN Fiscal Year 2023 budget, membership fees, and reserves
4. Discussion – Proposed EBSCO subscription database year-3 renewal
5. Next Membership Meeting: SWAN Quarterly March 3, 2022
6. Adjourn

Please note: this meeting will be recorded and posted on the SWAN Support site

Date: January 12, 2022
To: Library Directors & Administrators
From: Aaron Skog, Executive Director
Re: FY23 Budget draft



We will discuss a draft of the fiscal year 2023 (FY23) budget for the July 1, 2022 – June 30, 2023 period. This budget has proposed membership fees for the period, as well as the EBSCO subscription database group-purchase renewal costs.

Timeline

Below is an updated timeline of the budget process.

Date	Meeting Type	Action Items	Complete?
September 2021	Executive Director	Collect tax data from DuPage, Kane, Will, & submit FOIA to Cook County Treasurer for 2020 tax data.	Done
Friday, October 22, 2021	Regular SWAN Board Meeting	Board and Aaron Skog discuss priorities, research conducted, and identifies work for the next budget	Done
November 17, 2021	Finance Committee	Aaron Skog and Treasurer review budget & set Finance Committee meeting; if needed some policies reviewed	Done
Friday, November 19, 2021	Regular SWAN Board Meeting	Board accepts FY21 audit. Aaron to bring FY23 Budget draft; Board discuss fees & determines next steps.	Done
Thursday, December 2, 2021	Quarterly	Announce FY23 Budget Process. Remind directors to report any changes to bond payment schedule.	Done
Wednesday, December 17, 2021	Regular SWAN Board Meeting	Review of FY23 Budget Draft. Approve FY23 LLSAP grant agreement	Done
Sunday, January 1, 2022		Signed LLSAP grant agreements due to RAILS	Done
January 2022	SWANcom	Board present draft budget to membership. Aaron Skog/Board announcement of draft budget to membership. Set February Committee of the Whole date and location of meeting.	Done

Date	Meeting Type	Action Items	Complete?
Friday, January 21, 2022	Regular SWAN Board Meeting	Review and recommend draft of SWAN Budget for Membership presentation. Set COW date for February for membership review. Recommend Draft of SWAN Budget for Membership Presentation. Set Budget Meeting date for February for membership review.	
Tuesday, February 1, 2022	Membership Meeting	Meeting to discuss FY23 budget, fees, and reserves worksheet. Enterprise subscription & Aspen Discovery transition will be discussed.	
Friday, February 18, 2022	Regular SWAN Board Meeting	Incorporate changes, suggestions to SWAN budget. Create recommendation to membership.	
Thursday, March 3, 2022	Quarterly	Discussion & approval. Roll call vote to approve SWAN budget if in person. If virtual, the live voting platform will be used for the meeting.	

SWAN Budget Information & Guidelines

Fiscal Year 2023 (July 1, 2022 – June 30, 2023)

Committee of the Whole meeting, February 1, 2022

Introduction

Revenue & Expense, Reserves, & Membership Fees

The SWAN budget is introduced to the SWAN Board at its November meeting, with scheduled input from library directors at a February Committee of the Whole meeting, and concluding with a membership approval at the March SWAN Quarterly meeting.

New Budget Lines

SWAN's e-commerce solution required a centralized approach to online payments within the Aspen Discovery catalog. The payments collected online within Aspen Discovery are reflected in revenue budget line 4240 and the expense, e.g. payments dispersed to libraries, is indicated in expense budget line 5940. This budget added a Library Professional Development budget line 5330 which took expenses from 5470 to reflect the expenses associated with library staff training and certification within SWAN's budget.

Budget Highlights

Reduced Expenses

The prior budget reduced expenses and froze various budget lines in an effort to reflect the changing services brought upon SWAN by the global pandemic. This budget adds expenses associated with SWAN's annual in-person conference, and has modestly increased travel expenses.

Reduced Revenue: Money Market Interest & RAILS Grant Funding

RAILS reduced SWAN's state funding by \$39,327 to a total of \$522,691 last budget. The funding from RAILS for this year's budget increased by \$4,283.

Aspen Discovery

The Aspen Discovery catalog will replace Enterprise for this budget year. Enterprise subscription of \$58,735 will be removed from the May 1, 2022 SirsiDynix annual maintenance. However, SWAN is hosting Aspen Discovery and that expense will be part of the 5430 budget line.

5430 & 5440 Expenses	Current	FY2023
SirsiDynix Enterprise, SaaS Annual Subscription	\$41,185	\$0
SirsiDynix Portfolio, SaaS Annual Subscription - Up to 10K assets	\$15,000	\$0
SirsiDynix Enterprise SaaS Test System, Annual Subscription	\$2,550	\$0
Aspen hosting server expense	\$6,000	\$30,000
Aspen support with ByWater Solutions expense	\$85,000	\$85,000
	\$149,735	\$115,000

EBSCO Subscription Group Purchase

SWAN negotiated a year-3 group-purchase for all 88 public libraries for EBSCO subscription e-content. SWAN's User Experience team will provide assistance to all libraries, proxy links the database choices, and integrate these with each library's Article Search.

New: BLUEcloud Circulation & Delivery Label Printing

This budget anticipates a transition to BLUEcloud Circulation as the main library staff client interface for primary desk functions. With that transition, SWAN libraries will begin to use the automatic delivery label generated. The adoption of this feature will require using restick printers throughout the SWAN membership. This budget will utilize reserve funds for the purchase of 100 printers to be installed at libraries.

New: Beanstack

SWAN will purchase a license for libraries who cannot afford to use Beanstack for library reading programs. The shared platform will cost \$5,000 annually, and libraries that do not currently have this platform are free to use SWAN's provided Beanstack. Libraries participating in the shared SWAN Beanstack would participate in the same reading challenges. SWAN will coordinate with participating libraries to get feedback and consensus on the shared Beanstack configuration.

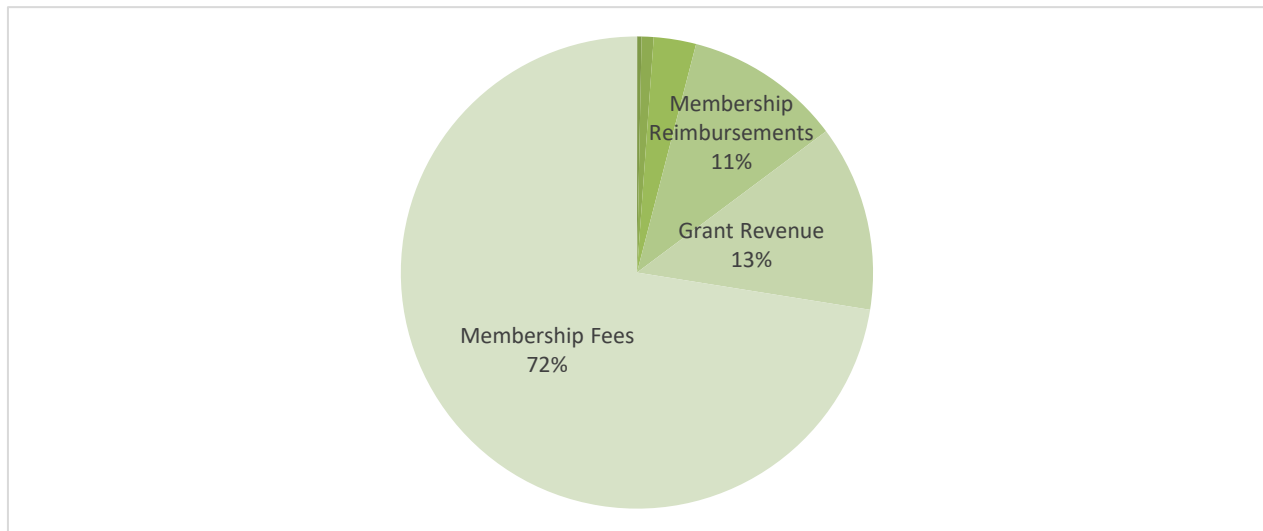
No New Libraries

SWAN will add libraries every other year, so FY23 would have been a year to add libraries, but no libraries reached the phase of requesting membership in SWAN.

KitKeeper, & Book Club Kits

KitKeeper is an online subscription through Plymouth Rocket that will help member libraries better manage bookclub kits. KitKeeper will be managed as a group-purchase for participating member libraries at \$25 per library. This budget funds the group-purchase expense and revenue as a pass-through.

Revenue



Membership Fees

4010 SWAN Full Membership Fees \$2,998,759

SWAN assesses membership fees based on academic, school, special, and public library. The formulas used for each are detailed on the SWAN support site under About > Board > Budget & Fees. Membership fee revenue on average does not increase. There are exceptions however, based on the formula, particularly for public libraries undergoing property tax or debt service changes within a given year. SWAN's FY24 membership fees are based on the 2019 tax year.

4011 SWAN Internet Access Membership Fees \$3,700

The Internet Access level service for school libraries continues through this fiscal year with 10 schools participating with partner SWAN member public libraries.

Membership Reimbursements

4110 Member One-Time Project Receipts \$0

This budget line would be used if a library needed to reimburse SWAN for one-time expenses incurred. For example, if the RAILS Catalog Grant were no longer available, a library joining SWAN would pay SWAN for the one-time expenses for the vendor expenses. No one-time projects are anticipated for the FY23 budget.

4190 Member Group Purchase Receipts \$445,686

Libraries that reimburse SWAN for group purchases are indicated in this budget line. EBSCO database group-purchase revenue collected from public libraries year 3. Additional group purchases are ongoing with renewals with Envisionware for self-check software, Curbside Communicator, ProPay swipes, additional restick printers (for libraries wanting/needing more than 1 printer provided). This budget includes a new service for a group of selected libraries for purchasing rental copies of books and movies from Baker & Taylor to be shared exclusively by those participating libraries.

Reimbursement for Losses

4220 Reimbursement Losses for Resource Sharing \$50,000

Revenue associated with reimbursement for ILL or reciprocal borrowing with libraries outside of the SWAN consortium, e.g. Chicago Public Library.

4230 Collection Agency Fees \$0

SWAN may collect a modest fee for administering services within the Unique Management collection of unpaid reciprocal borrower invoices.

4240 E-commerce transactions \$70,000

Payments made through the Aspen Discovery catalog by library users will be recorded as revenue and then distributed back to member libraries as an expense off-set in this budget.

Grant Revenue

4310 RAILS Support to SWAN \$527,381

RAILS provides support to SWAN through an annual grant to support regional resource sharing. The grant amount for FY23 to SWAN is divided equally between all public libraries and is indicated as a discount off SWAN membership fees. RAILS reduced SWAN's state funding by \$39,327 to a total of \$522,691 last budget. The funding from RAILS for this year's budget increased by \$4,283.

4320 Other Grant Revenue \$0

The one-time grant revenue from adding new libraries would be recorded in this line. No new libraries are planned in this budget year, as SWAN now adds new member libraries every other year.

Registration & Event Receipts

4499 Annual Conference Receipts \$12,000

Any revenue collected as part of the SWAN Expo are recorded in this budget line. This includes vendor table fees or libraries invoices for the event to offset event catering. The FY23 budget plans for a resumption of the annual conference.

Investment & Interest

4510 Interest Income \$1,000

SWAN interest income fell mid-way through last year's budget.

4520 Investment Income \$0

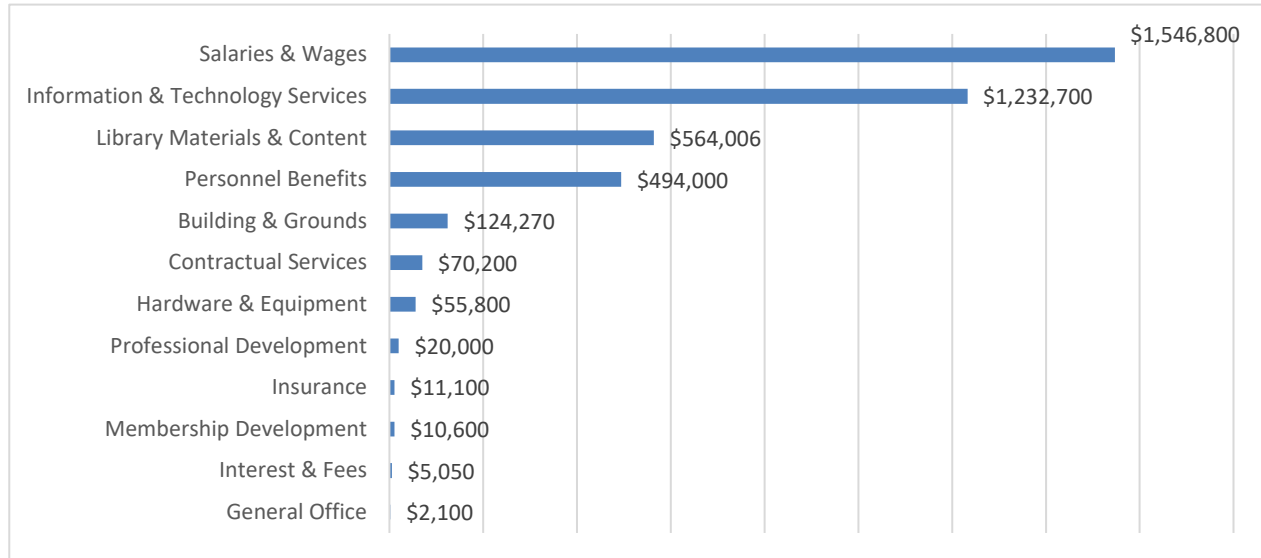
SWAN currently does not invest reserve funds. Should the organization decide to invest, the annual income would be recorded in this budget revenue line.

Reserve Fund Transfer

4600 Reserve Fund Transfer \$34,000

One delivery label printer will be purchased for each library with the expense being offset by SWAN cash reserves.

Expenses



Salaries & Wages

5000 Salaries & Wages \$1,546,800

SWAN has left positions unfilled and eliminated a position to remain flexible within the strategic plan. There is one proposed position that is on hold that this budget could support.

Personnel Benefits

5021 Social Security Taxes \$118,400

Payroll taxes and fringe benefits-- employer's share only. Social Security taxes (FICA). The lower expense is due to position attrition.

5022 State Unemployment Insurance -

Organization pays unemployment directly should it be required.

5023 Worker's Compensation \$3,000

Organization insurance provided by insurance vendor.

5024 Retirement Benefits \$140,900

SWAN provides its employees a 401a retirement plan through ICMA-RC. The organization does not provide a defined benefit plan or participate in Illinois Municipal Retirement Fund (IMRF).

5025 Health, Dental, Life And Disability Insurance \$228,800

Employee health insurance is provided by LIMRiCC Purchase of Health Insurance Program (PHIP). The FY23 rates from LIMRiCC have increased with the second year renewal with Aetna. However, this budget reflects a reduction due to changes within SWAN positions.

5026 Tuition Reimbursements \$2,500
Tuition reimbursement benefit for employees.

5085 Staff Wellness \$400
Benefit offered to SWAN employees for participation within the employee Wellness Plan which includes incentives for breaktimes for walking, pedometers, exercise, and healthy lifestyles. No change from the prior budget.

Building & Grounds

SWAN headquarters located at 800 Quail Ridge Drive in Westmont, Illinois includes expenses for the lease and operations of the headquarters.

5110 Rent/Lease \$113,160
SWAN signed a 7-year lease in 2016 for office space. The rent escalation is included for this year's budget, along with the anticipated shared operating expenses and property taxes for FY23. Refer to SWAN's FY20 audit for the full debt obligation of the office lease.

5120 Utilities \$5,700
Facility electricity and natural gas expenses are recorded in this line. Based on 6 months of actual expenses in 2021, this expense is lower for this budget.

5130 Property Insurance \$650
Property and flood insurance covers office space furniture and equipment, and the RAILS 125 Tower Drive data center equipment. There will no longer be any active equipment at the RAILS data center, so this insurance is no longer needed.

5140 Repairs & Maintenance \$1,560
Used for facility repairs including door fob security maintenance and repairs.

5150 Custodial Service & Supplies \$3,200
SWAN's cleaning service was changed for two days per week.

5190 Other Building Maintenance \$0
Used for alarms and security cameras related to facility expense.

Professional Development

SWAN's 2019-2023 five-year strategic plan places emphasis on delivering solutions to libraries using the talent of the SWAN employees. Prior budgets mixed the staff professional development and efforts to provide membership development. The new SWAN budget structure ensures expenses associated with each category are understood and budgeted appropriately, as they have at times made it difficult to understand mid-year expenses properly.

5210 Conference Travel \$6,000

SWAN staff attend various conferences annually such as ILA, COSUGI, ALA, or the COSUGI Consortia Special Interest Group meeting. This includes expenditures for overnight lodging, fares for airfare, planes, trains, taxicabs, auto rental, meals, etc. There is planned conference travel in the FY23 budget.

5220 Staff Meetings \$400

Expenses related to SWAN staff meetings, mostly food and a holiday luncheon, are recorded in this line.

5230 Staff Professional Development \$6,800

SWAN employees participate in presentations at ILA, ALA, COSUGI and other professional organization events. Attending the annual COSUGI conference is a must for SWAN staff as it allows the organization to plan for upcoming library software features and functions. Expenses in FY23 are with Articulate Storyline, and Inquisiq.

5240 Professional Association Membership Dues \$2,500

SWAN employees participate in ALA, ILA, and COSUGI activities, often presenting at conferences. Individual

5250 Educational Material \$800

The FY23 budget reduced some of the online learning expenses for employees.

5260 Online Learning \$3,500

SWAN employee training and courses on best security practice, identifying and preventing phishing attempts, and training as required by law.

Membership Development

This budget category focuses on providing professional development for the member libraries within SWAN. This includes SWAN staff consulting, leading meetings, and facilitating membership networking events.

5310 Travel Reimbursement \$1,400

The SWAN organization has no vehicles and reimburses employees for mileage attending the 50+ membership meetings held annually. Travel expenses are reduced for the budget due to the pandemic, but some mileage reimbursement will occur.

5320 Membership Meetings \$0
Refreshments for the 50+ membership advisory and user group meetings held annually, such as coffee and donuts, or other activity supplies. Reduced to zero for the budget due to the pandemic.

5330 Library Professional Development \$6,700
Subscription expenses for learning management system and online tutorial coursework. Library staff have the ability to complete interactive training and within the learning management system, complete courses to master skills in the software systems SWAN provides. Articulate Storyline (for interactive, online learning). These expenses prior to FY23 were in the 5470 budget line for application software.

5350 Marketing & Promotional Material \$0
Expenses related to printing library promotional material such as bookmarks or brochures.

5399 Annual Conference \$2,500
SWAN's annual conference, called SWAN Expo (or SWANx), supports speaker fees, honorarium, and travel expense for speakers. Costs associated with the facility and event are noted with the budget lines ending in "99" within this budget chart of accounts. The SWAN Expo for 2022 will resume.

Information & Technology Services

This budget category includes technology expenses related to SWAN's resource sharing platform. The platform includes expenses related to the technology required to run the platform for library content within the consortium.

5410 Infrastructure Licensing \$0
Budget line eliminated since FY22: combined with 5430 Server Software Licensing.

5420 Application Software Licensing \$20,600
Expenses related to SWAN's support software application include employee tools to create videos, deploy client software, design presentations, run meetings, and create instructional material. Vendor licensing includes: Formsite (webform software subscription), SurveyMonkey (for ongoing usability Input), MailChimp for e-newsletter, Envisionware One-Stop Self-Checkout Software, Adobe Acrobat, Adobe Creative Suite, Asana, Axure RP 8 Perpetual Pro License, Storyblocks, LastPass, Microsoft Office O365, Microsoft Visio Pro O365, Ecobee, Panda Virus Protection & Patch Management, and MSI Package Installer.

5430 Server Software Licensing \$96,600

Expenses related to SWAN's support infrastructure including SSL Certificates for SWAN, domain subscription, SonicWALL Security licensing and subscription, Microsoft Active Directory, Microsoft Azure, and Microsoft Server licenses. The FY22 budget includes an increase to cover expenses for SWAN hosting Aspen and additional servers within our Azure infrastructure. The server licensing expenses related to SWAN's library services platform to run SirsiDynix Symphony and test systems. The membership virtual private network utilizing SonicWALL is supported through a group purchase of 100 nodes at \$12,155 annually for FY22 to keep SonicWALL appliances on the most current version of the software.

5440 Library Services Platform \$985,700

The heart of SWAN's resource sharing software platform expenses is recorded in this budget line, including expenses from SirsiDynix, OCLC, and EBSCO Discovery Services, and OpenAthens. For FY23, SirsiDynix expenses are budgeted for \$445,380, OCLC at \$279,138, and the Article Search integration through EBSCO Discovery Services and OpenAthens is \$169,648 total. Support from ByWater Solutions for SWAN's Aspen Discovery Services is \$85,000.

5450 Data Management Services \$30,500

Expenses related to maintaining bibliographic and user data within the SWAN library services platform. This includes software provided to cataloging libraries to maintain bibliographic standards of the consortium. Vendors expenses include: ALA RDA Toolkit for Cataloging Libraries, WebDewey (OCLC negotiated directly with SWAN), MARCIVE (ongoing authority updates), The MARC of Quality (TMQ), and Unique Management Services National Change of Address (NCOA) patron database update expense at \$13,000 annually.

5460 Information Subscription Service \$77,100

SWAN's discovery platform includes multiple add-on services to add cover artwork and reading recommendations. Vendor expenses include: ProQuest Syndetic Solutions (book jackets, enhanced content), EBSCO Novelist Select (reviews content). The addition of three libraries to SWAN increased Novelist Select licensing.

5470 Subscription Support Services \$7,700

SWAN's support platform includes virtual meeting hosting for all governance and user groups, remote desktop assistance to library staff, and remote monitoring of systems for SWAN on-call staff. Expenses associated with this budget line include: Citrix GoToAssist, Citrix GoToMeeting (Plus for 100 attendees), StatusCake (for site monitoring and alerting SWAN staff to outages), and the volume email service through SendGrid (patron notification plus library notification).

5480 Telecommunications \$14,500

Expenses associated with SWAN facility connection to the internet and phone support was lowered due to a renegotiated lease with Comcast.

5860 Notification & Collection \$16,900

SWAN has contracted with a vendor to print all user notices through Unique Management Services. The FY23 budget anticipates expenses for notice printing to continue to be lower based on actual 12 months use prior to the pandemic. New to this budget is Unique Management automation of phone notification as a monthly expense.

5870 Recruitment \$0

Costs for personnel search, advertising of an open position at SWAN.

5899 Annual Conference Facility Contract \$8,900

SWAN Expo at Moraine Valley Community College Business and Conference Center has a one-day cost for the location plus food provided for the event. The FY23 budget has included the facility rental at the Business and Conference Center, but reduced the number of room space required.

Library Materials & Content

SWAN's chart of accounts includes budget lines for the organization to provide content to libraries—be it print, electronic, or as a group purchase pass-through.

5910 Print Materials \$5,000

This line is intended for print collections supplied to member libraries, either through a direct order through Baker & Taylor, or rental copies via the jobber. SWAN is also dedicating \$5,000 from the reserves in a book rental trial with Baker & Taylor to supplement popular titles to reduce hold queue wait times.

5920 Reimbursement for Resource Sharing \$50,000

Expenses related to the SWAN member libraries centralized reimbursement of unreturned material. The expenses in this line are offset by revenue in the 4220 Reimbursement Losses for Resource Sharing line.

5930 Group Purchases - Content \$10,000

This line's purpose is for online content provided to all libraries as part of SWAN's membership fees. It may include eBook content, online databases subscriptions, or other e-content.

5940 E-commerce payment transactions \$70,000

Expenses related to the Aspen Discovery online payments through PayPal. Library payments will be collected in the revenue budget line 4240 and quarterly reconciliation and payments back to the libraries are recorded in this budget line (new with fiscal year 2023).

5990 Group Purchases - Electronic Resources \$429,006
SWAN negotiated group purchase for online subscriptions through EBSCO anticipates a 3% increase for FY23. The associated revenue offset in the revenue 4190 budget line.

Interest & Fees

6010 Bank Fees \$4,700
Expenses associated with bank fees for stopping checks or other services are recorded in this line. The banking service for lock box deposits was added to this budget line at \$2,700 annually.

6020 Merchant Account Fees \$50
SWAN subscribes to ProPay as part of the BLUEcloud Commerce required for online Enterprise payments. SWAN pays \$40 annually, as do all member libraries within the ProPay service.

6030 Interest Payment \$0
Expenses for any loan or debt service payments would be recorded in this line. SWAN currently has no expenses for this line.

6099 Annual Conference Merchant Fees \$300
Expenses associated with any online transaction fees for processing annual conference SWAN Expo online payments are recorded in this line. The SWAN Expo resumes after being suspended for 2 years.

Asset Management

6110 Depreciation \$3,607
For proprietary funds and government-wide financial statements only. Depreciation charges are intended to allocate the cost of a fixed asset over the estimated useful life of the unit in a systematic and rational manner using the straight-line method. The number of physical assets depreciated has fallen dramatically since SWAN moved to an infrastructure-as-a-service model and no longer needs to purchase servers over \$5,000. SirsiDynix migration and operating system server migration expenses are in their final years of depreciation.

6120 (Gain)/Loss on Asset Disposal \$0

6130 Vacation Expense

\$0

Per GASB, Vacation Expense is the account created to segregate the amount of the expense incurred by SWAN for the current years' addition or subtraction to the balance of earned but unused staff vacation time. The Balance Sheet reflects the fact that Compensated Absences has been adjusted for the year-end to show, as of June 30 of the given fiscal year, the current value of this earned but unused vacation. This is more a potential than actual liability as employees most likely will use most of their vacations while being employed.

SWAN Budget Summary

SWAN Budget	FY22 Budget	FY23 Budget	Change
4000 Membership Fees	\$2,921,563	\$3,002,459	\$80,896
4100 Membership Reimbursements	\$463,984	\$445,686	(\$18,298)
4200 Reimbursement for Losses	\$30,900	\$120,000	\$89,100
4300 Grant Revenue	\$522,691	\$527,381	\$4,690
4400 Registration & Event Receipts	\$0	\$12,000	\$12,000
4500 Investment & Interest	\$2,000	\$1,000	(\$1,000)
4600 Reserve Fund Transfer	\$90,000	\$34,000	(\$56,000)
Total Revenue	\$4,031,138	\$4,142,526	\$111,388
5000 Salaries & Wages	\$1,546,800	\$1,546,800	\$0
5020 Personnel Benefits	\$500,000	\$494,000	(\$6,000)
5100 Building & Grounds	\$125,854	\$124,270	(\$1,584)
5200 Professional Development	\$16,200	\$20,000	\$3,800
5300 Membership Development	\$2,000	\$10,600	\$8,600
5400 Information & Technology Services	\$1,255,200	\$1,232,700	(\$22,500)
5500 General Office	\$3,000	\$2,100	(\$900)
5600 Hardware & Equipment	\$4,700	\$55,800	\$51,100
5700 Insurance	\$9,400	\$11,100	\$1,700
5800 Contractual Services	\$103,060	\$70,200	(\$32,860)
5900 Library Materials & Content	\$485,584	\$564,006	\$78,422
6000 Interest & Fees	\$3,740	\$5,050	\$1,310
Total Operating Expenses	\$4,055,538	\$4,136,626	\$81,088
6100 Asset Management	\$4,522	\$3,607	(\$915)
Excess of revenues over (under) estimated expenses	(\$52,585)	\$0	

Revenue & Expense Budget		FY22 Budget	FY23 Budget	Change
Revenue				
4000	Membership Fees			
4010	SWAN Full Membership Fees	\$2,917,863	\$2,998,759	\$80,896
4011	SWAN Internet Access Membership Fees	\$3,700	\$3,700	\$0
4100	Membership Reimbursements			
4110	Member One-Time Project Receipts	\$0	\$0	\$0
4190	Member Group Purchase Receipts	\$463,984	\$445,686	(\$18,298)
4200	Reimbursement for Losses			
4220	Reimbursement Losses for Resource Sharing	\$30,000	\$50,000	\$20,000
4230	Collection Agency Fees	\$900	\$0	(\$900)
4240	E-commerce transactions		\$70,000 NEW	
4300	Grant Revenue			
4310	RAILS Support to SWAN	\$522,691	\$527,381	\$4,690
4320	Other Grant Revenue	\$0	\$0	\$0
4400	Registration & Event Receipts			
4499	Annual Conference Receipts	\$0	\$12,000	\$12,000
4500	Investment & Interest			
4510	Interest Income	\$2,000	\$1,000	(\$1,000)
4520	Investment Income	\$0	\$0	\$0
4600	Reserve Fund Transfer	\$90,000	\$34,000	(\$56,000)
Total Revenue		\$4,031,138	\$4,142,526	\$111,388

Expenses				
5000	Salaries & Wages	\$1,546,800	\$1,546,800	\$0
5020	Personnel Benefits			
5021	Social Security Taxes	\$118,400	\$118,400	\$0
5022	State Unemployment Insurance	-	-	
5023	Worker's Compensation	\$3,000	\$3,000	\$0
5024	Retirement Benefits	\$140,900	\$140,900	\$0
5025	Health, Dental, Life And Disability Insurance	\$234,600	\$228,800	(\$5,800)
5026	Tuition Reimbursements	\$2,500	\$2,500	\$0
5085	Staff Wellness	\$600	\$400	(\$200)
5100	Building & Grounds			
5110	Rent/Lease	\$110,104	\$113,160	\$3,056
5120	Utilities	\$5,700	\$5,700	\$0
5130	Property Insurance	\$0	\$650	\$650
5140	Repairs & Maintenance	\$1,050	\$1,560	\$510
5150	Custodial Service & Supplies	\$9,000	\$3,200	(\$5,800)
5190	Other Building Maintenance	\$0	\$0	\$0

Revenue & Expense Budget		FY22 Budget	FY23 Budget	Change
5200	Professional Development			
5210	Conference Travel	\$0	\$6,000	\$6,000
5220	Staff Meetings	\$600	\$400	(\$200)
5230	Staff Professional Development	\$8,800	\$6,800	(\$2,000)
5240	Professional Association Membership Dues	\$2,500	\$2,500	\$0
5250	Educational Material	\$800	\$800	\$0
5260	Online Learning	\$3,500	\$3,500	\$0
5300	Membership Development			
5310	Travel Reimbursement	\$800	\$1,400	\$600
5320	Membership Meetings	\$0	\$0	\$0
5330	Library Professional Development		\$6,700	\$6,700
5350	Marketing & Promotional Material	\$1,200	\$0	(\$1,200)
5399	Annual Conference	\$0	\$2,500	\$2,500
5400	Information & Technology Services			
5410	Infrastructure Licensing	\$0	\$0	\$0
5420	Application Software Licensing	\$22,000	\$20,600	(\$1,400)
5430	Server Software Licensing	\$62,000	\$96,600	\$34,600
5440	Library Services Platform	\$1,036,800	\$985,700	(\$51,100)
5450	Data Management Services	\$27,500	\$30,500	\$3,000
5460	Information Subscription Service	\$76,600	\$77,100	\$500
5470	Subscription Support Services	\$9,900	\$7,700	(\$2,200)
5480	Telecommunications	\$20,400	\$14,500	(\$5,900)
5490	Group Purchases - Services	\$12,600.00	\$5,900.00	(\$6,700)
5500	General Office			
5510	Office Supplies	\$1,500	\$1,500	\$0
5520	Postage	\$1,500	\$600	(\$900)
5550	Furniture	\$0	\$0	\$0
5599	Annual Conference Supplies	\$0	\$0	\$0
5600	Hardware & Equipment			
5610	Equipment Rental/Maintenance	\$3,700	\$3,700	\$0
5620	Hardware	\$1,000	\$40,000	\$39,000
5690	Group Purchases - Hardware	\$0	\$12,100	\$12,100
5700	Insurance	\$9,400	\$11,100	\$1,700
5800	Contractual Services			
5810	Legal	\$5,000	\$1,500	(\$3,500)
5820	Accounting	\$17,560	\$18,900	\$1,340
5830	Consulting	\$38,000	\$19,200	(\$18,800)
5840	Payroll Service Fees	\$3,600	\$4,800	\$1,200
5850	Contractual Agreements	\$0	\$0	\$0
5860	Notification & Collection	\$38,000	\$16,900	(\$21,100)
5870	Recruitment	\$900	\$0	(\$900)
5899	Annual Conference Facility Contract	\$0	\$8,900	\$8,900
5900	Library Materials & Content			
5910	Print Materials	\$5,000	\$5,000	\$0

Revenue & Expense Budget		FY22 Budget	FY23 Budget	Change
5920	Reimbursement for Resource Sharing	\$30,000	\$50,000	\$20,000
5930	Group Purchases - Content	\$0	\$10,000	\$10,000
5940	E-commerce payment transactions		\$70,000 NEW	
5990	Group Purchases - Electronic Resources	\$450,584	\$429,006	(\$21,578)
6000	Interest & Fees			
6010	Bank Fees	\$3,700	\$4,700	\$1,000
6020	Merchant Account Fees	\$40	\$50	\$10
6030	Interest Payment	\$0	\$0	\$0
6099	Annual Conference Merchant Fees	\$0	\$300	\$300
Subtotal Expenses		\$4,071,238	\$4,142,526	\$4,388
6100	Asset Management			
6110	Depreciation	\$2,322	\$3,607	\$1,285
6120	(Gain)/Loss on Asset Disposal	\$0		
6130	Vacation Expense	\$2,200		(\$2,200)
Total Expenses		\$4,071,238	\$4,142,526	\$71,288
Total Revenue (from above)		\$4,018,654	\$4,142,526	
Excess of revenues over (under) estimated expenses		(\$52,585)	\$0.00	

SWAN Reserves Plan: Updated for FY23 Budget

Capital Expenditures (anything over \$5,000)	FY22	FY23	FY24	FY25	FY26
	July 2021-June 2022	July 2022-June 2023	July 2023-June 2024	July 2023-June 2025	July 2023-June 2026
Prior Year Balance: End of fiscal year, final audit, see "Unrestricted" on Balance Sheet	\$2,241,167	\$2,107,667	\$2,073,667	\$2,073,667	\$2,073,667
Reserves collected & Impact Fee	\$0	\$0	\$0	\$0	\$0
Server replacement: no longer required with cloud-based Infrastructure-as-a-Service*	\$0	\$0	\$0	\$0	\$0
Firewall replacement: no longer required with cloud-based Infrastructure-as-a-Service	\$0	\$0	\$0	\$0	\$0
Printer purchase		(\$34,000)			
Aspen Discovery Project	(\$85,000)				
Baker & Taylor Project	(\$5,000)				
Security audit	(\$43,500)				
Funds for EMV commerce devices (chip & PIN)					
Funds for SWAN staff computer replacement					
Future ILS Migration Budget (\$465,740)					
Total	\$2,107,667	\$2,073,667	\$2,073,667	\$2,073,667	\$2,073,667
Maintain 4 months operating in reserve (policy)	(\$1,380,842)	(\$1,449,884)	(\$1,522,378)	(\$1,598,497)	(\$1,678,422)
Over/(Under) Reserve Policy	\$726,825	\$623,783	\$551,289	\$475,170	\$395,245
Operating Budget (5% increases each year after FY21)	\$4,142,526	\$4,349,652	\$4,567,134.92	\$4,795,491.66	\$5,035,266.24
Months operating in reserve	6.11	5.72	5.45	5.19	4.94

* Infrastructure-as-a-Service (IaaS) is the recommended direction for SWAN for its future servers. IaaS is a subscription that will be an expense in the operating budget. The result is there is no server hardware purchased, therefore no need to budget as a capital expenditure.

Chart 1: Membership Fee Chart for FY23 SWAN Budget
Proposed Committee of the Whole draft
February 1, 2022

SWAN Library	Base + Funding Fees (No State LLSAP Grant)	State LLSAP Grant Discount	SWAN Fee Total	FY22 Fees	Change from prior year fees
Acorn Public Library District	\$ 28,820	(\$5,551)	\$ 23,269	\$ 22,511	\$758
Alsip-Merrionette Park Public Library District	\$ 40,718	(\$5,551)	\$ 35,167	\$ 34,788	\$379
Batavia Public Library District	\$ 53,505	(\$5,551)	\$ 47,954	\$ 46,391	\$1,562
Bedford Park Public Library District	\$ 32,149	(\$5,551)	\$ 26,598	\$ 25,712	\$886
Beecher Community Library District	\$ 21,284	(\$5,551)	\$ 15,733	\$ 15,221	\$512
Bellwood Public Library	\$ 34,903	(\$5,551)	\$ 29,351	\$ 28,876	\$475
Bensenville Community Public Library District	\$ 33,899	(\$5,551)	\$ 28,347	\$ 27,631	\$716
Bensenville Elementary School District #2	\$ 17,500		\$ 17,500	\$ 17,500	\$0
Berkeley Public Library	\$ 22,094	(\$5,551)	\$ 16,542	\$ 15,912	\$630
Berwyn Public Library	\$ 51,624	(\$5,551)	\$ 46,073	\$ 45,644	\$429
Bloomington Public Library	\$ 47,527	(\$5,551)	\$ 41,976	\$ 40,984	\$992
Blue Island Public Library	\$ 29,943	(\$5,551)	\$ 24,392	\$ 23,838	\$554
Bridgeview Public Library	\$ 29,062	(\$5,551)	\$ 23,510	\$ 23,076	\$434
Broadview Public Library District	\$ 29,707	(\$5,551)	\$ 24,156	\$ 23,538	\$618
Calumet City Public Library	\$ 31,676	(\$5,551)	\$ 26,125	\$ 26,671	(\$546)
Calumet Park Public Library	\$ 19,817	(\$5,551)	\$ 14,265	\$ 13,857	\$408
Carol Stream Public Library	\$ 52,290	(\$5,551)	\$ 46,738	\$ 46,165	\$573
Chicago Heights Public Library	\$ 26,102	(\$5,551)	\$ 20,551	\$ 20,092	\$458
Chicago Ridge Public Library	\$ 31,910	(\$5,551)	\$ 26,359	\$ 25,631	\$728
Cicero Public Library	\$ 35,536	(\$5,551)	\$ 29,984	\$ 29,150	\$834
Clarendon Hills Public Library	\$ 25,928	(\$5,551)	\$ 20,377	\$ 19,667	\$710
Crestwood Public Library District	\$ 23,779	(\$5,551)	\$ 18,227	\$ 17,466	\$761
Crete Public Library District	\$ 35,722	(\$5,551)	\$ 30,171	\$ 29,431	\$740
Dolton Public Library District	\$ 28,760	(\$5,551)	\$ 23,209	\$ 23,076	\$133
Downers Grove Public Library	\$ 72,693	(\$5,551)	\$ 67,141	\$ 64,841	\$2,300
Eisenhower Public Library District	\$ 55,310	(\$5,551)	\$ 49,759	\$ 48,328	\$1,431
Elmwood Park Public Library	\$ 34,213	(\$5,551)	\$ 28,662	\$ 27,934	\$728
Evergreen Park Public Library	\$ 30,127	(\$5,551)	\$ 24,576	\$ 23,699	\$876
Flossmoor Public Library	\$ 31,637	(\$5,551)	\$ 26,086	\$ 25,112	\$974
Forest Park Public Library	\$ 36,818	(\$5,551)	\$ 31,266	\$ 30,197	\$1,070
Frankfort Public Library District	\$ 42,546	(\$5,551)	\$ 36,994	\$ 35,542	\$1,453
Franklin Park Public Library District	\$ 37,756	(\$5,551)	\$ 32,204	\$ 30,286	\$1,919
Geneva Public Library District	\$ 69,653	(\$5,551)	\$ 64,102	\$ 61,300	\$2,802
Glen Ellyn Public Library	\$ 59,834	(\$5,551)	\$ 54,283	\$ 52,968	\$1,314
Glenside Public Library District	\$ 49,959	(\$5,551)	\$ 44,407	\$ 45,298	
Glenwood-Lynwood Public Library District	\$ 32,042	(\$5,551)	\$ 26,491	\$ 21,642	\$4,849
Grande Prairie Public Library District	\$ 32,809	(\$5,551)	\$ 27,258	\$ 26,617	\$641
Green Hills Public Library District	\$ 41,548	(\$5,551)	\$ 35,997	\$ 33,794	\$2,202
Harvey Public Library District	\$ 26,313	(\$5,551)	\$ 20,761	\$ 20,501	\$261
Hillside Public Library	\$ 31,107	(\$5,551)	\$ 25,556	\$ 24,455	\$1,100
Hinsdale Public Library	\$ 46,989	(\$5,551)	\$ 41,438	\$ 40,012	\$1,425
Hodgkins Public Library District	\$ 24,003	(\$5,551)	\$ 18,452	\$ 17,858	\$593
Homewood Public Library District	\$ 39,642	(\$5,551)	\$ 34,091	\$ 33,609	\$482
Indian Prairie Public Library District	\$ 55,097	(\$5,551)	\$ 49,546	\$ 47,451	\$2,094
Itasca Community Library	\$ 33,587	(\$5,551)	\$ 28,036	\$ 27,149	\$887
Justice Public Library District	\$ 21,311	(\$5,551)	\$ 15,760	\$ 15,276	\$483
Kaneville Public Library District	\$ 19,013	(\$5,551)	\$ 13,462	\$ 13,023	\$439
La Grange Public Library	\$ 42,629	(\$5,551)	\$ 37,077	\$ 35,667	\$1,411
LaGrange Park Public Library District	\$ 35,244	(\$5,551)	\$ 29,692	\$ 30,216	(\$523)
Lansing Public Library	\$ 41,136	(\$5,551)	\$ 35,585	\$ 34,398	\$1,187
Linda Sokol Francis Brookfield Library	\$ 40,856	(\$5,551)	\$ 35,304	\$ 34,331	\$973
Lyons Public Library	\$ 24,921	(\$5,551)	\$ 19,369	\$ 18,800	\$569
Markham Public Library	\$ 24,605	(\$5,551)	\$ 19,053	\$ 17,150	\$1,903

Chart 1: Membership Fee Chart for FY23 SWAN Budget
Proposed Committee of the Whole draft
February 1, 2022

SWAN Library	Base + Funding Fees (No State LLSAP Grant)	State LLSAP Grant Discount	SWAN Fee Total	FY22 Fees	Change from prior year fees
Matteson Area Public Library District	\$ 41,576	(\$5,551)	\$ 36,025	\$ 35,482	\$542
Maywood Public Library District	\$ 30,558	(\$5,551)	\$ 25,006	\$ 24,585	\$421
McCook Public Library District	\$ 22,470	(\$5,551)	\$ 16,919	\$ 16,280	\$639
Melrose Park Public Library	\$ 28,831	(\$5,551)	\$ 23,280	\$ 21,379	\$1,901
Messenger Public Library of North Aurora	\$ 36,186	(\$5,551)	\$ 30,635	\$ 29,678	\$957
Midlothian Public Library	\$ 30,589	(\$5,551)	\$ 25,038	\$ 26,255	(\$1,218)
Morton Arboretum	\$ 12,500		\$ 12,500	\$ 12,500	\$0
Nancy L. McConathy Public Library District	\$ 20,639	(\$5,551)	\$ 15,087	\$ 14,668	\$419
National University of Health Sciences	\$ 11,000		\$ 11,000	\$ 11,667	(\$667)
North Riverside Public Library District	\$ 28,307	(\$5,551)	\$ 22,755	\$ 22,056	\$699
Northlake Public Library District	\$ 37,625	(\$5,551)	\$ 32,074	\$ 30,664	\$1,410
Oak Brook Public Library	\$ 27,801	(\$5,551)	\$ 22,250	\$ 21,414	\$836
Oak Lawn Public Library	\$ 72,122	(\$5,551)	\$ 66,571	\$ 65,304	\$1,267
Oak Park Public Library	\$ 111,033	(\$5,551)	\$ 105,482	\$ 99,175	\$6,306
Palos Heights Public Library	\$ 34,263	(\$5,551)	\$ 28,711	\$ 24,424	\$4,287
Palos Park Public Library	\$ 22,843	(\$5,551)	\$ 17,292	\$ 16,762	\$530
Park Forest Public Library	\$ 34,349	(\$5,551)	\$ 28,797	\$ 30,685	(\$1,887)
Prairie State College	\$ 21,000		\$ 21,000	\$ 23,333	(\$2,333)
Prairie Trails Public Library District	\$ 37,197	(\$5,551)	\$ 31,646	\$ 30,642	\$1,004
Richton Park Public Library District	\$ 27,119	(\$5,551)	\$ 21,568	\$ 21,245	\$323
River Forest Public Library	\$ 30,992	(\$5,551)	\$ 25,441	\$ 24,640	\$801
River Grove Public Library District	\$ 22,662	(\$5,551)	\$ 17,111	\$ 16,454	\$656
Riverdale Public Library District	\$ 22,564	(\$5,551)	\$ 17,013	\$ 16,947	\$66
Riverside Public Library	\$ 29,287	(\$5,551)	\$ 23,735	\$ 23,014	\$721
Roselle Public Library District	\$ 36,668	(\$5,551)	\$ 31,116	\$ 30,181	
Schiller Park Public Library	\$ 28,832	(\$5,551)	\$ 23,280	\$ 22,369	\$911
South Holland Public Library	\$ 39,140	(\$5,551)	\$ 33,589	\$ 32,617	\$971
St Charles Public Library District	\$ 96,845	(\$5,551)	\$ 91,294	\$ 90,320	\$974
Steger-South Chicago Heights Public Library District	\$ 22,264	(\$5,551)	\$ 16,713	\$ 16,119	\$594
Stickney-Forest View Public Library District	\$ 29,012	(\$5,551)	\$ 23,461	\$ 22,771	\$689
Sugar Grove Public Library District	\$ 24,638	(\$5,551)	\$ 19,086	\$ 18,478	\$608
Summit Public Library District	\$ 21,565	(\$5,551)	\$ 16,014	\$ 15,665	\$349
Theosophical Society in America	\$ 12,500		\$ 12,500	\$ 12,500	\$0
Thomas Ford Memorial Library	\$ 32,467	(\$5,551)	\$ 26,916	\$ 26,198	\$718
Thornton Public Library	\$ 19,701	(\$5,551)	\$ 14,149	\$ 13,630	\$519
Tinley Park Public Library	\$ 72,977	(\$5,551)	\$ 67,426	\$ 62,512	\$4,914
Town and Country Public Library District	\$ 31,715	(\$5,551)	\$ 26,163	\$ 25,090	\$1,073
University Park Public Library District	\$ 23,908	(\$5,551)	\$ 18,357	\$ 17,717	\$640
Villa Park Public Library	\$ 32,014	(\$5,551)	\$ 26,462	\$ 33,279	(\$6,817)
Warrenville Public Library District	\$ 35,573	(\$5,551)	\$ 30,022	\$ 29,139	
West Chicago Public Library District	\$ 40,614	(\$5,551)	\$ 35,063	\$ 34,053	\$1,010
Westchester Public Library	\$ 31,041	(\$5,551)	\$ 25,489	\$ 24,683	\$807
Westmont Public Library	\$ 37,704	(\$5,551)	\$ 32,153	\$ 31,082	\$1,070
William Leonard Public Library District	\$ 20,476	(\$5,551)	\$ 14,925	\$ 14,539	\$386
Wood Dale Public Library District	\$ 42,920	(\$5,551)	\$ 37,369	\$ 36,208	\$1,161
Woodridge Public Library	\$ 56,331	(\$5,551)	\$ 50,779	\$ 49,253	\$1,527
Worth Public Library District	\$ 26,069	(\$5,551)	\$ 20,518	\$ 19,922	\$595

Chart 2: Public Library County Tax Payments

Library Name	Cook County Treasurer Tax Year 2019	DuPage County Treasurer Tax Year 2019	Kane County Treasurer Tax Year 2019	Will County County Treasurer Tax Year 2019	Lake County Treasurer Tax Year 2018	Total Tax Revenue Issued 2019	Bond Amount 2019 (Removed)	Public Library Tax Revenue Total 2019
Acorn Public Library District	\$1,143,848.26					\$1,143,848.26	(\$61,495.00)	\$1,082,353.26
Alsip-Merrionette Park Public Library District	\$2,880,206.40					\$2,880,206.40	(\$589,100.00)	\$2,291,106.40
Batavia Public Library District			\$4,316,286.37			\$4,316,286.37	(\$726,150.00)	\$3,590,136.37
Bedford Park Public Library District	\$1,420,521.42					\$1,420,521.42	\$0.00	\$1,420,521.42
Beecher Community Library District				\$316,732.73		\$316,732.73	\$0.00	\$316,732.73
Bellwood Public Library	\$1,700,261.47					\$1,700,261.47	\$0.00	\$1,700,261.47
Bensenville Community Public Library District		\$1,598,289.37				\$1,598,289.37	\$0.00	\$1,598,289.37
Berkeley Public Library	\$398,985.01					\$398,985.01	\$0.00	\$398,985.01
Berwyn Public Library	\$3,399,076.52					\$3,399,076.52	\$0.00	\$3,399,076.52
Bloomington Public Library		\$2,982,848.41				\$2,982,848.41	\$0.00	\$2,982,848.41
Blue Island Public Library	\$1,196,395.83					\$1,196,395.83	\$0.00	\$1,196,395.83
Bridgeview Public Library	\$1,364,338.19					\$1,364,338.19	(\$257,450.00)	\$1,106,888.19
Broadview Public Library District	\$1,442,164.48					\$1,442,164.48	(\$269,705.00)	\$1,172,459.48
Brookfield Public Library	\$2,305,062.82					\$2,305,062.82	\$0.00	\$2,305,062.82
Calumet City Public Library	\$1,472,454.12					\$1,472,454.12	(\$100,000.00)	\$1,372,454.12
Calumet Park Public Library	\$167,654.97					\$167,654.97	\$0.00	\$167,654.97
Carol Stream Public Library		\$3,701,119.66				\$3,701,119.66	(\$234,461.00)	\$3,466,658.66
Chicago Heights Public Library	\$806,201.66					\$806,201.66	\$0.00	\$806,201.66
Chicago Ridge Public Library	\$1,396,274.94					\$1,396,274.94	\$0.00	\$1,396,274.94
Cicero Public Library	\$1,764,592.78					\$1,764,592.78	\$0.00	\$1,764,592.78
Clarendon Hills Public Library		\$788,526.66				\$788,526.66	\$0.00	\$788,526.66
Crestwood Public Library District	\$570,166.91					\$570,166.91	\$0.00	\$570,166.91
Crete Public Library District				\$1,783,538.57		\$1,783,538.57	\$0.00	\$1,783,538.57
Dolton Public Library District	\$1,076,246.71					\$1,076,246.71	\$0.00	\$1,076,246.71
Downers Grove Public Library		\$5,539,446.81				\$5,539,446.81	\$0.00	\$5,539,446.81
Eisenhower Public Library District	\$4,440,688.11					\$4,440,688.11	(\$667,187.00)	\$3,773,501.11
Elmwood Park Public Library	\$1,630,202.34					\$1,630,202.34	\$0.00	\$1,630,202.34
Evergreen Park Public Library	\$1,215,096.15					\$1,215,096.15	\$0.00	\$1,215,096.15
Flossmoor Public Library	\$1,368,494.45					\$1,368,494.45	\$0.00	\$1,368,494.45
Forest Park Public Library	\$1,894,840.08					\$1,894,840.08	\$0.00	\$1,894,840.08
Frankfort Public Library District	\$31,179.36			\$2,445,552.56		\$2,476,731.92	\$0.00	\$2,476,731.92
Franklin Park Public Library District	\$1,990,107.70					\$1,990,107.70	\$0.00	\$1,990,107.70
Geneva Public Library District			\$6,767,739.07			\$6,767,739.07	(\$1,537,071.26)	\$5,230,667.81
Glen Ellyn Public Library		\$4,730,661.99				\$4,730,661.99	(\$497,562.00)	\$4,233,099.99
Glenside Public Library District		\$3,598,486.39				\$3,598,486.39	(\$368,625.02)	\$3,229,861.37
Glenwood-Lynwood Public Library District	\$1,862,290.52					\$1,862,290.52	(\$452,612.50)	\$1,409,678.02
Grande Prairie Public Library District	\$1,487,580.36					\$1,487,580.36	\$0.00	\$1,487,580.36
Green Hills Public Library District	\$2,740,375.26					\$2,740,375.26	(\$365,000.00)	\$2,375,375.26
Harvey Public Library District	\$827,592.15					\$827,592.15	\$0.00	\$827,592.15
Hillside Public Library	\$1,314,675.15					\$1,314,675.15	\$0.00	\$1,314,675.15
Hinsdale Public Library	\$395,673.28	\$2,762,286.04				\$3,157,959.32	(\$229,812.00)	\$2,928,147.32
Hodgkins Public Library District	\$592,939.62					\$592,939.62	\$0.00	\$592,939.62

Chart 2: Public Library County Tax Payments

Library Name	Cook County Treasurer Tax Year 2019	DuPage County Treasurer Tax Year 2019	Kane County Treasurer Tax Year 2019	Will County County Treasurer Tax Year 2019	Lake County Treasurer Tax Year 2018	Total Tax Revenue Issued 2019	Bond Amount 2019 (Removed)	Public Library Tax Revenue Total 2019
Homewood Public Library District	\$2,323,819.77					\$2,323,819.77	(\$142,053.75)	\$2,181,766.02
Indian Prairie Public Library District	\$218,994.61	3,532,901.74				\$3,751,896.35	\$0.00	\$3,751,896.35
Itasca Community Library		\$1,566,624.72				\$1,566,624.72	\$0.00	\$1,566,624.72
Justice Public Library District	\$319,474.25					\$319,474.25	\$0.00	\$319,474.25
Kaneville Public Library District			\$86,040.83			\$86,040.83	\$0.00	\$86,040.83
La Grange Public Library	\$3,110,745.93					\$3,110,745.93	(\$625,550.00)	\$2,485,195.93
LaGrange Park Public Library District	\$1,883,522.40					\$1,883,522.40	(\$148,600.00)	\$1,734,922.40
Lansing Public Library	\$2,518,046.60					\$2,518,046.60	(\$184,500.00)	\$2,333,546.60
Lyons Public Library	\$701,186.68					\$701,186.68	(\$15,000.00)	\$686,186.68
Markham Public Library	\$747,237.58					\$747,237.58	(\$93,150.00)	\$654,087.58
Matteson Area Public Library District	\$2,378,230.37					\$2,378,230.37	\$0.00	\$2,378,230.37
Maywood Public Library District	\$1,258,846.22					\$1,258,846.22	\$0.00	\$1,258,846.22
McCook Public Library District	\$598,210.31					\$598,210.31	(\$161,017.50)	\$437,192.81
Melrose Park Public Library	\$1,083,459.23					\$1,083,459.23	\$0.00	\$1,083,459.23
Messenger Public Library of North Aurora			\$1,830,682.96			\$1,830,682.96	\$0.00	\$1,830,682.96
Midlothian Public Library	\$1,474,652.90					\$1,474,652.90	(\$212,609.69)	\$1,262,043.21
Nancy L. McConathy Public Library District	\$305,844.64			\$99.90		\$305,944.54	(\$54,772.44)	\$251,172.10
North Riverside Public Library District	\$1,030,161.49					\$1,030,161.49	\$0.00	\$1,030,161.49
Northlake Public Library District	\$2,624,052.24					\$2,624,052.24	(\$647,200.00)	\$1,976,852.24
Oak Brook Public Library		\$978,830.00				\$978,830.00	\$0.00	\$978,830.00
Oak Lawn Public Library	\$5,809,401.35					\$5,809,401.35	(\$327,900.00)	\$5,481,501.35
Oak Park Public Library	\$10,510,324.26					\$10,510,324.26	(\$1,075,733.95)	\$9,434,590.31
Palos Heights Public Library	\$1,635,257.39					\$1,635,257.39	\$0.00	\$1,635,257.39
Palos Park Public Library	\$475,084.25					\$475,084.25	\$0.00	\$475,084.25
Park Forest Public Library	\$1,343,979.07			\$300,003.62		\$1,643,982.69	\$0.00	\$1,643,982.69
Prairie Trails Public Library District	\$1,933,370.58					\$1,933,370.58	\$0.00	\$1,933,370.58
Richton Park Public Library District	\$1,331,683.43					\$1,331,683.43	(\$422,187.50)	\$909,495.93
River Forest Public Library	\$1,302,984.46					\$1,302,984.46	\$0.00	\$1,302,984.46
River Grove Public Library District	\$456,731.04					\$456,731.04	\$0.00	\$456,731.04
Riverdale Public Library District	\$446,789.59					\$446,789.59	\$0.00	\$446,789.59
Riverside Public Library	\$1,129,714.60					\$1,129,714.60	\$0.00	\$1,129,714.60
Roselle Public Library District	MISSING	\$1,879,580.59				\$1,879,580.59	\$0.00	\$1,879,580.59
Schiller Park Public Library	\$1,083,500.06					\$1,083,500.06	\$0.00	\$1,083,500.06
South Holland Public Library	\$2,130,761.49					\$2,130,761.49	\$0.00	\$2,130,761.49
St Charles Public Library District		569,974.76	\$7,423,222.01			\$7,993,196.77	\$0.00	\$7,993,196.77
Steger-South Chicago Heights Public Library District	\$283,788.84			\$150,120.41		\$433,909.25	(\$17,647.32)	\$416,261.93
Stickney-Forest View Public Library District	\$1,241,067.74					\$1,241,067.74	(\$139,250.00)	\$1,101,817.74
Sugar Grove Public Library District			\$1,421,683.89			\$1,421,683.89	(\$764,250.00)	\$657,433.89
Summit Public Library District	\$852,078.90					\$852,078.90	(\$506,771.50)	\$345,307.40
Thomas Ford Memorial Library	\$1,698,635.85					\$1,698,635.85	(\$245,800.00)	\$1,452,835.85
Thornton Public Library	\$155,857.22					\$155,857.22	\$0.00	\$155,857.22

Chart 2: Public Library County Tax Payments

Library Name	Cook County Treasurer Tax Year 2019	DuPage County Treasurer Tax Year 2019	Kane County Treasurer Tax Year 2019	Will County County Treasurer Tax Year 2019	Lake County Treasurer Tax Year 2018	Total Tax Revenue Issued 2019	Bond Amount 2019 (Removed)	Public Library Tax Revenue Total 2019
Tinley Park Public Library	\$4,652,864.65			\$1,450,672.41		\$6,103,537.06	(\$535,200.00)	\$5,568,337.06
Town and Country Public Library District			\$1,376,408.42			\$1,376,408.42	\$0.00	\$1,376,408.42
University Park Public Library District	\$8,697.48			\$574,583.81		\$583,281.29	\$0.00	\$583,281.29
Villa Park Public Library		\$2,245,009.07				\$2,245,009.07	(\$838,250.00)	\$1,406,759.07
Warrenville Public Library District		\$1,938,241.07				\$1,938,241.07	(\$169,874.75)	\$1,768,366.32
West Chicago Public Library District		\$2,280,514.78				\$2,280,514.78	\$0.00	\$2,280,514.78
Westchester Public Library	\$1,307,918.65					\$1,307,918.65	\$0.00	\$1,307,918.65
Westmont Public Library		\$1,984,868.63				\$1,984,868.63	\$0.00	\$1,984,868.63
William Leonard Public Library District	\$234,630.98					\$234,630.98	\$0.00	\$234,630.98
Wood Dale Public Library District		\$2,514,800.77				\$2,514,800.77	\$0.00	\$2,514,800.77
Woodridge Public Library		\$3,616,758.37		\$260,453.77		\$3,877,212.14	\$0.00	\$3,877,212.14
Worth Public Library District	\$802,866.97					\$802,866.97	\$0.00	\$802,866.97

Chart 3: Public Library Bond Amounts Reported

Public Library	Bond Amt for FY23 Fee Formula (2019)	Annual Debt Service 2020	Annual Debt Service 2021	Annual Debt Service 2022
Acorn Public Library District	\$ 61,495	\$ 61,095.00	\$ 60,660.00	\$ 60,980.00
Alsip-Merrionette Park Public Library District	\$ 589,100	\$ 587,600.00		
Batavia Public Library District	\$ 726,150			
Bedford Park Public Library District	\$ -			
Beecher Community Library District	\$ -			
Bellwood Public Library	\$ -			
Bensenville Community Public Library District	\$ -			
Berkeley Public Library	\$ -			
Berwyn Public Library	\$ -			
Bloomington Public Library	\$ -			
Blue Island Public Library	\$ -			
Bridgeview Public Library	\$ 257,450	\$ 259,850.00	\$ 256,850.00	\$ 253,650.00
Broadview Public Library District	\$ 269,705	\$ 271,005.00	\$ 266,630.00	\$ 267,455.00
Brookfield Public Library	\$ -			
Calumet City Public Library	\$ 100,000			
Calumet Park Public Library	\$ -			
Carol Stream Public Library	\$ 234,461	\$ 234,461.00	\$ 234,461.00	\$ 234,461.00
Chicago Heights Public Library	\$ -			
Chicago Ridge Public Library	\$ -			
Cicero Public Library	\$ -			
Clarendon Hills Public Library	\$ -			
Crestwood Public Library District	\$ -			
Crete Public Library District	\$ -			
Dolton Public Library District	\$ -			
Downers Grove Public Library	\$ -			
Eisenhower Public Library District	\$ 667,187	\$ 668,571.00	\$ 670,311.00	\$ 670,671.00
Elmwood Park Public Library	\$ -			
Evergreen Park Public Library	\$ -			
Flossmoor Public Library	\$ -			

Chart 3: Public Library Bond Amounts Reported

Public Library	Bond Amt for FY23 Fee Formula (2019)	Annual Debt Service 2020	Annual Debt Service 2021	Annual Debt Service 2022
Forest Park Public Library	\$ -			
Frankfort Public Library District	\$ -			
Franklin Park Public Library District	\$ -			
Geneva Public Library District	\$ 1,537,071	\$ 1,562,196.26	\$ 1,565,271.26	\$ 1,576,546.26
Glen Ellyn Public Library	\$ 497,562			
Glenside Public Library District	\$ 368,625	\$ 368,682.52	\$ 368,140.02	\$ 372,115.02
Glenwood-Lynwood Public Library District	\$ 452,613	\$ 453,912.50	\$ 454,912.50	\$ 450,612.50
Grande Prairie Public Library District	\$ -			
Green Hills Public Library District	\$ 365,000	\$ 370,000.00	\$ 380,000.00	\$ 390,000.00
Harvey Public Library District	\$ -			
Hillside Public Library	\$ -			
Hinsdale Public Library	\$ 229,812	\$ 241,112.00	\$ 247,112.00	\$ 252,912.00
Hodgkins Public Library District	\$ -			
Homewood Public Library District	\$ 142,054	\$ 137,396.25		
Indian Prairie Public Library District	\$ -			
Itasca Community Library	\$ -			
Justice Public Library District	\$ -			
Kaneville Public Library District	\$ -			
La Grange Public Library	\$ 625,550	\$ 629,450.00	\$ 623,050.00	\$ 626,550.00
LaGrange Park Public Library District	\$ 148,600	\$ 149,775.00	\$ 155,725.00	\$ 151,525.00
Lansing Public Library	\$ 184,500	\$ 187,800.00	\$ 185,900.00	\$ 183,700.00
Lyons Public Library	\$ 15,000	\$ 15,000.00	\$ 15,000.00	\$ 15,000.00
Markham Public Library	\$ 93,150	\$ 93,150.00	\$ 93,150.00	\$ 93,150.00
Matteson Area Public Library District	\$ -			
Maywood Public Library District	\$ -			
McCook Public Library District	\$ 161,018	\$ 165,415.00	\$ 164,035.00	\$ 162,285.00
Melrose Park Public Library	\$ -			
Messenger Public Library of North Aurora	\$ -			
Midlothian Public Library	\$ 212,610	\$ 209,708.50	\$ 212,069.50	\$ 239,294.50

Chart 3: Public Library Bond Amounts Reported

Public Library	Bond Amt for FY23 Fee Formula (2019)	Annual Debt Service 2020	Annual Debt Service 2021	Annual Debt Service 2022
Nancy L. McConathy Public Library District	\$ 54,772	\$ 527,467.40		
North Riverside Public Library District	\$ -			
Northlake Public Library District	\$ 647,200	\$ 689,000.00	\$ 691,750.00	\$ 685,900.00
Oak Brook Public Library	\$ -			
Oak Lawn Public Library	\$ 327,900	\$ 328,900.00	\$ 329,600.00	
Oak Park Public Library	\$ 1,075,734	\$ 1,070,807.08		
Palos Heights Public Library	\$ -			
Palos Park Public Library	\$ -			
Park Forest Public Library	\$ -			
Prairie Trails Public Library District	\$ -			
Richton Park Public Library District	\$ 422,188	\$ 421,000.00	\$ 419,000.00	\$ 421,162.50
River Forest Public Library	\$ -			
River Grove Public Library District	\$ -			
Riverdale Public Library District	\$ -			
Riverside Public Library	\$ -			
Roselle Public Library District	\$ -			
Schiller Park Public Library	\$ -			
South Holland Public Library	\$ -			
St Charles Public Library District	\$ -			
Steger-South Chicago Heights Public Library District	\$ 17,647	\$ 17,647.32	\$ 116,200.68	
Stickney-Forest View Public Library District	\$ 139,250	\$ 141,950.00	\$ 139,550.00	\$ 142,150.00
Sugar Grove Public Library District	\$ 764,250	\$ 789,000.00	\$ 812,400.00	\$ 839,450.00
Summit Public Library District	\$ 506,772	\$ 508,364.00	\$ 539,779.50	\$ 315,487.00
Thomas Ford Memorial Library	\$ 245,800	\$ 243,800.00	\$ 241,600.00	\$ 239,200.00
Thornton Public Library	\$ -			
Tinley Park Public Library	\$ 535,200	\$ 510,800.00	\$ 536,400.00	
Town and Country Public Library District	\$ -			
University Park Public Library District	\$ -			
Villa Park Public Library	\$ 838,250	\$ 831,850.00	\$ 840,050.00	\$ 842,250.00

Chart 3: Public Library Bond Amounts Reported

Public Library	Bond Amt for FY23 Fee Formula (2019)	Annual Debt Service 2020	Annual Debt Service 2021	Annual Debt Service 2022
Warrenville Public Library District	\$ 169,875	\$167,188.25	\$169,452.00	\$166,666.00
West Chicago Public Library District	\$ -			
Westchester Public Library	\$ -			
Westmont Public Library	\$ -			
William Leonard Public Library District	\$ -			
Wood Dale Public Library District	\$ -			
Woodridge Public Library	\$ -			
Worth Public Library District	\$ -			

Chart 4: Academic, School, Special Library Fees

Academic Libraries

- 1) Student Population (IBHE Profile), rounded to nearest 1,000 * 2
- 2) Title Count rounded to nearest 1,000 / 3

	Population	Item Count	Pop Fee	Item/Title Fee	FY23 Total
National University of Health Sciences	592	26,672	\$ 2,000	\$ 9,000	\$ 11,000
Prairie State College	3,579	38,538	\$ 8,000	\$ 13,000	\$ 21,000

School Libraries

- 1) Student Population (Illinois Report Card), rounded to nearest 1000 * 5 [2018-2019 Report Card data]
- 2) Building Location/Branch Fee \$2,500 per building

	Population	Buildings	Pop Fee	Building Fee	FY23 Total
Bensenville School District #2	2,090	3	\$ 10,000	\$ 7,500	\$ 17,500

Special Libraries

- 1) Title Fee (Tier 1 <10,000 \$7,500; Tier 2 <40,000 \$10,000; Tier 3 > 40,000 \$12,500)
- 2) Building Location/Branch Fee \$2,500 per building

	Buildings	Title Count	Building Fee	Title Fee	FY23 Total
Morton Arboretum	1	23,543	\$ 2,500	\$ 10,000	\$ 12,500
The Theosophical Society in America	1	29,116	\$ 2,500	\$ 10,000	\$ 12,500

SWAN EBSCO Group-purchase discount pricing: 4 pricing groups
Year-3 renewal: July 1, 2021 - June 30, 2022
Committee of the Whole meeting draft: 84 public libraries participating

Library Name	Price Quartile	Group Purchase Discount	SWAN FY23	SWAN FY22	Increase / (Decrease)
			Group-Purchase Price (Year-3)	Group-Purchase Price (Year-2)	
Acorn Public Library District	Group 1	69%	\$4,362	\$4,235	\$127
Alsip-Merrionette Park Public Library District	Group 4	34%	\$6,256	\$6,073	\$182
Batavia Public Library District	Group 4	34%	\$6,256	\$6,073	\$182
Bedford Park Public Library District	Group 4	34%	\$2,115	\$2,053	\$62
Beecher Community Library District	Group 1	69%	\$1,732	\$1,681	\$50
Bellwood Public Library	Group 3	40%	\$5,687	\$5,521	\$166
Bensenville Community Public Library District	Group 2	44%	\$5,308	\$5,153	\$155
Berkeley Public Library	Group 1	69%	\$1,732	\$1,681	\$50
Berwyn Public Library	Group 3	40%	\$11,181	\$10,856	\$326
Bloomington Public Library	Group 4	34%	\$6,256	\$6,073	\$182
Bridgeview Public Library	Group 2	44%	\$5,308	\$5,153	\$155
Broadview Public Library District	Group 3	40%	\$3,351	\$3,254	\$98
Brookfield Public Library	Group 4	34%	\$6,256	\$6,073	\$182
Calumet City Public Library	Group 1	69%	\$4,235	\$7,427	(\$3,192)
Carol Stream Public Library	Group 4	34%	\$9,016	\$8,754	\$263
Chicago Heights Public Library	Group 1	69%	\$4,235	\$4,112	\$123
Cicero Public Library	Group 1	69%	\$7,965	\$7,733	\$232
Clarendon Hills Public Library	Group 2	44%	\$3,128	\$3,037	\$91
Crestwood Public Library District	Group 1	69%	\$1,732	\$1,681	\$50
Crete Public Library District	Group 3	40%	\$5,687	\$5,521	\$166
Dolton Public Library District	Group 2	44%	\$5,308	\$5,153	\$155
Downers Grove Public Library	Group 4	34%	\$9,016	\$8,754	\$263
Eisenhower Public Library District	Group 4	34%	\$6,256	\$6,073	\$182
Elmwood Park Public Library	Group 2	44%	\$5,308	\$5,521	(\$213)
Evergreen Park Public Library	Group 2	44%	\$5,308	\$5,153	\$155
Flossmoor Public Library	Group 4	34%	\$3,687	\$3,254	\$433
Forest Park Public Library	Group 3	40%	\$5,687	\$5,521	\$166
Frankfort Public Library District	Group 3	40%	\$8,197	\$7,958	\$239
Franklin Park Public Library District	Group 3	40%	\$5,687	\$5,521	\$166
Geneva Public Library District	Group 4	34%	\$9,016	\$8,754	\$263
Glen Ellyn Public Library	Group 4	34%	\$6,256	\$6,073	\$182
Glenside Public Library District	Group 3	40%	\$9,310	\$9,038	\$271
Grande Prairie Public Library District	Group 2	44%	\$7,650	\$4,112	\$3,539
Green Hills Public Library District	Group 3	40%	\$8,197	\$7,427	\$769
Harvey Public Library District	Group 1	69%	\$2,938	\$2,853	\$86
Hillside Public Library	Group 3	40%	\$3,351	\$3,254	\$98
Hinsdale Public Library	Group 4	34%	\$6,256	\$6,073	\$182
Hodgkins Public Library District	Group 3	40%	\$1,922	\$1,866	\$56
Homewood Public Library District	Group 3	40%	\$5,687	\$5,521	\$166
Indian Prairie Public Library District	Group 4	34%	\$9,016	\$8,754	\$263
Itasca Community Library	Group 4	34%	\$3,687	\$3,579	\$107
Justice Public Library District	Group 1	69%	\$2,938	\$2,853	\$86

SWAN EBSCO Group-purchase discount pricing: 4 pricing groups
Year-3 renewal: July 1, 2021 - June 30, 2022
Committee of the Whole meeting draft: 84 public libraries participating

Library Name	Price Quartile	Group Purchase Discount	SWAN FY23	SWAN FY22	Increase / (Decrease)
			Group-Purchase Price (Year-3)	Group-Purchase Price (Year-2)	
Kaneville Public Library District	Group 1	69%	\$993	\$964	\$29
LaGrange Park Public Library District	Group 3	40%	\$5,687	\$5,521	\$166
Lansing Public Library	Group 4	34%	\$6,256	\$6,073	\$182
Lyons Public Library	Group 1	69%	\$2,938	\$2,853	\$86
Markham Public Library	Group 1	69%	\$2,938	\$2,853	\$86
Matteson Area Public Library District	Group 4	34%	\$6,256	\$6,073	\$182
Maywood Public Library District	Group 2	44%	\$5,308	\$5,153	\$155
McCook Public Library District	Group 2	44%	\$1,794	\$1,742	\$52
Melrose Park Public Library	Group 2	44%	\$5,308	\$2,853	\$2,455
Messenger Public Library of North Aurora	Group 3	40%	\$5,687	\$5,521	\$166
Midlothian Public Library	Group 2	44%	\$5,308	\$5,153	\$155
Nancy L. McConathy Public Library District	Group 1	69%	\$2,938	\$2,853	\$86
North Riverside Public Library District	Group 3	40%	\$3,351	\$3,254	\$98
Oak Brook Public Library	Group 2	40%	\$3,351	\$3,037	\$315
Oak Lawn Public Library	Group 4	34%	\$12,300	\$11,941	\$358
Oak Park Public Library	Group 4	34%	\$12,300	\$11,941	\$358
Palos Heights Public Library	Group 2	44%	\$5,308	\$5,153	\$155
Palos Park Public Library	Group 2	44%	\$1,794	\$1,742	\$52
Park Forest Public Library	Group 3	40%	\$5,687	\$5,521	\$166
Prairie Trails Public Library District	Group 2	44%	\$7,650	\$7,427	\$223
Richton Park Public Library District	Group 1	69%	\$2,938	\$2,853	\$86
River Forest Public Library	Group 2	44%	\$5,308	\$5,153	\$155
River Grove Public Library District	Group 1	69%	\$2,938	\$2,853	\$86
Riverside Public Library	Group 3	40%	\$3,351	\$3,254	\$98
Roselle Public Library District	Group 3	40%	\$6,459	\$6,271	\$188
Schiller Park Public Library	Group 2	44%	\$5,308	\$6,073	(\$766)
South Holland Public Library	Group 3	40%	\$5,687	\$5,153	\$534
St Charles Public Library District	Group 4	34%	\$12,300	\$11,941	\$358
Stickney-Forest View Public Library District	Group 2	44%	\$5,308	\$5,153	\$155
Sugar Grove Public Library District	Group 1	69%	\$2,938	\$2,853	\$86
Summit Public Library District	Group 1	69%	\$2,938	\$2,853	\$86
Thomas Ford Memorial Library	Group 2	44%	\$5,308	\$5,153	\$155
Thornton Public Library	Group 1	69%	\$993	\$964	\$29
Tinley Park Public Library	Group 4	34%	\$12,300	\$11,941	\$358
University Park Public Library District	Group 1	69%	\$1,732	\$1,681	\$50
Villa Park Public Library	Group 2	44%	\$5,308	\$5,521	(\$213)
Warrenville Public Library District	Group 2	44%	\$6,029	\$5,853	\$176
West Chicago Public Library District	Group 3	40%	\$5,687	\$5,521	\$166
Westchester Public Library	Group 2	44%	\$5,308	\$5,153	\$155
William Leonard Public Library District	Group 1	69%	\$1,732	\$1,681	\$50
Wood Dale Public Library District	Group 4	34%	\$6,256	\$6,073	\$182
Worth Public Library District	Group 1	69%	\$2,938	\$2,853	\$86